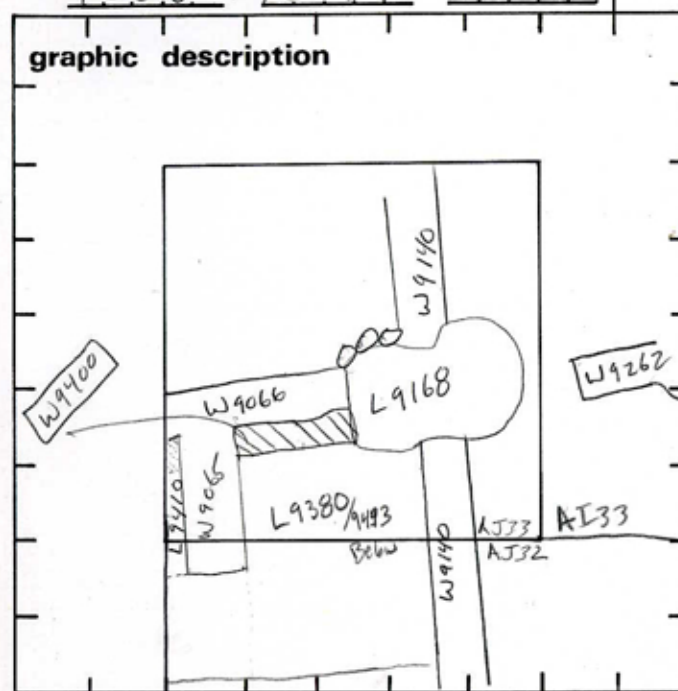


TEL DOR 1989 field G square AJ33 phase (in area): LOCUS W 9400

date opened 14/07/89 level 1368 date closed 11/08/89 level Wall - 13.66
Scale - 13.47 floor level _____ type of locus Mud Brick wall

loci above 9.1.7.8 loci below None yet sealed by _____
W9066 maybe W9065



section

final locus no. _____ arch. unit / logical area _____ stage (in sq.) _____ final STRATUM _____

Summary:

Description: Opened: When Excavation of L9380 revealed Mud Brick Wall with Foga lines.

Def/Lim: West by W9065, North by W9066, East by L9168, South by L9380.

MATRIX: Hard, Dark Mud Brick on a layer of white plaster sitting on 2 courses of stones (see Polaroid).

closed: Wall not closed; end of season

relations: Sloping surfaces of L9380 seem to reach W9400. Though floors disappear in a line against it (wash line?). Surfaces below - Relation unclear, they may reach socle. Cut by Pit L9168. Walls W9065 and W9066 float above W9400. But probably cut/robbed upper levels. Fill of L9410 showed signs of coming down on mud brick in north end, possibly the westward extension of W9400. W9262 in AJ33 is probably an extension of W9400, its ash plaster surface, on which it sits, is at 13.69 - equivalent to that of L9400.

- photos
- reason for opening
 - definition / limits
 - reason for closing
 - relation to other elements
 - working photos, nos: included in 9780-983-85
 - publication photos
 - architects permission
- written by R. Lindstrom checked by J. Zorn

But probably cut/robbed upper levels. Fill of L9410 showed signs of coming down on mud brick in north end, possibly the westward extension of W9400. W9262 in AJ33 is probably an extension of W9400, its ash plaster surface, on which it sits, is at 13.69 - equivalent to that of L9400.

Locus W 94,001	Dor 19 94	Fld G ₁	Sq A.A.331	Loc. type Wall (Card 2)
Open 1.8 / 1.7 / 1.4	High at 1.3.714	at	Low at 1.3.712	Seals: _____
Close 0.14 / 0.18 / 0.14	1.3.714	C.W	1.3.514	Sealed by: W 94,066
Floor: type _____	1.3.714	_____	1.3.714	Loci 1,8031
Length 1.9	Width 1.0	Vol _____	_____	above _____
Value S ₁	Remove _____	Drawn? Y, E, S	_____	below _____
Photo #(1) 117-532	Photo #(2) 117-533			
Written by: J.Y.S	Checked by: JIRIZ			

Unit _____	Phase 6 (a?)	Stage _____	Stratum _____	PoM _____
------------	--------------	-------------	---------------	-----------

Summary _____

Opened: When western portion of W9066 removed up to western face of W9065 came down on L18031, which was quickly closed when W9400 was recognized in this material.

Limits (N) Bounded by L18063 to the North.

(S) Bounded by F18019 to the South.

(E) Bounded by W9066 and the northern portion of W9065 to the East.

(W) Bounded by L9725 to the West.

Closed: Not closed, end of season.

Matrix: Dark brown mudbrick material with no discernable bricks on soles of fieldstones, mostly 10-20 cm with one 40 x 15 cm stone.

Relations: W9400 is covered by L18031. W9400 is cut by L9725 to the West. To the East, W9400 continues beneath W9066 and the northern portion to the East, reappearing on the East side of W9065 in SQA533, where W9400 was first excavated in '89. To the North, W9400 is reached by F18015, L18063 below F18015, F18063, and L18079 below F18063. To the South, L18019 cuts the mudbrick material on the stone soles of W9400, while F18019 reaches W9400. L18019 cuts W9400 as excavated, but in actuality, the portion of L18019 which cuts W9400 is probably the upper reaches of the mudbrick portion of W9400 which was not identified as such.

Additional Observations/Value: Phase 7 wall reached by floors with sealed deposits.
High Value.

Additional Photo #'s: 117-534, 117-535

Locus W 9490	Dor 20 Q3	Fld G ₁	Sq AK33	Loc. type E-W fieldstone + mudbrick wall
Open	Date	High at	Low at	Seals: _____
Close				Sealed by: W9066
Floor: type				Loci 18901
Length 1.4	Width 0.9		Vol _____	above _____
Value S ₁	Remove		Drawn? _____	Loci 18904
Photo # (1)		Photo # (2)		below _____
Written by: EBS		Checked by: EBS		
Unit	Phase	Stage	Stratum	PoM

Summary

Opened: in 1994

Limits (N) L18901

(S) unexcavated

(E) unexcavated, but W9400 continues into AK33.

(W) L18901, L18904

Closed: wall was exposed but not excavated.

Matrix: Large stones (0.7m long) are set in the western edge of the wall, framing the doorway formed W18921. The eastern exposed extent in AK33 is dark chocolate brown mudbrick with a patch of white facing (0.7m long).

Relations: ^{preserved} This wall continues to the east into AJ33. Walls W9400 (E-W), W9914 (N-S), W9975 (N-S) and W18921 (E-W) enclose a room with F18901. The ~~above~~ construction of stone framing the doorway ~~and~~ against a mudbrick segment suggests this is an interior partition wall.

Wall # 13.71 (N) - 13.51 (S); socle # 13.47

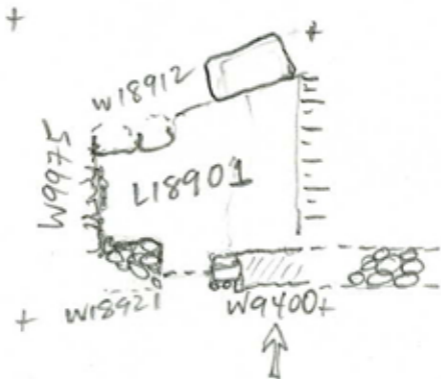
Additional Observations/Value: Phase 7 wall

Locus

W 9,4,90

Sketch plan

N



S