

TEL DOR 1989 field G square A53.4 phase (in area): LOCUS W9408

date opened 14/07/89 level 1478 date closed 10/08/89 level 1405 floor level _____ type of locus mudbrick wall.

loci above L9202 L9181 loci below None yet sealed by _____

graphic description final locus no. arch. unit / logical area stage (in sq.) final STRATUM

Summary:

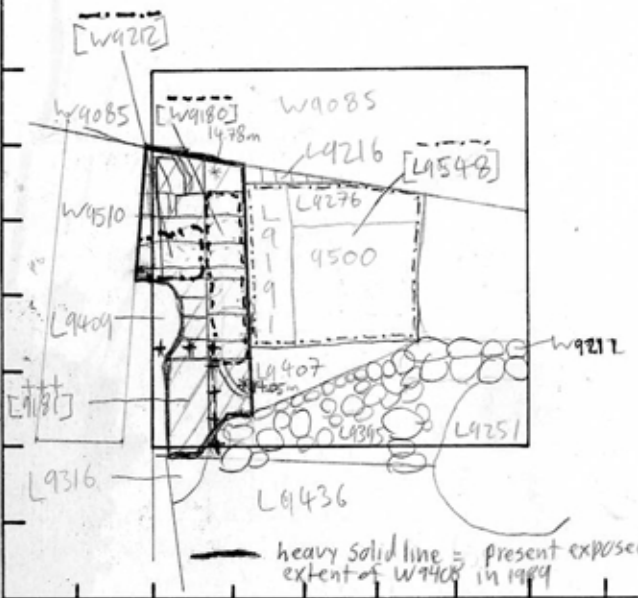
Description: opened: when L9181 split into greyish material at L9409 and mudbrick of W9408.

Definition/Limits: bounded by the material beneath W9085 to the North, W9218, L9191, L9407 to the East, L9395 and the material beneath L9316 to the South, and by L9409 and the material beneath Rm W9510 to the West.

matrix: orange mudbricks w/ bits of brickar. and brown mudbricks avg. 40cm x 25cm.

Reason For Closing: not closed, end of '89 season.

Relationship to Other Elements: W9408 is cut by L9181 and L9409. It reaches the material beneath Bm W9510 and



section
 heavy solid line = present exposed extent of W9408 in 1989
 light solid line = single bricks within W9408
 +++ = 9181

photos

- reason for opening
- definition / limits
- reason for closing
- relation to other elements
- working photos, nos:
- publication photos
- architects permission

written by John Kelding-Sloam checked by J. Zorn

W9085, probably continuing beneath both of them. W9216 abuts W9408. L9191, L9548, and L9407 all reach W9408, being of the same depositional unit. W9212 and W9180 are both set into W9408 and cut the top courses of it. W9408 reaches the material beneath L9316 and may continue underneath it, but this is doubtful, because W9408 either reaches, or is cut by L9395 which is really a wall. We cannot determine whether or not L9316

Locus W 9908	Dor 19 93	Fld 6	Sq AJ34	Loc. type Mudbrick Wall
Open 05/07/93	High at 1.4.30 N	Low at 1.4.02 S	Seals: _____	
Close 09/08/93	_____	_____	Sealed by: _____	
Floor: type _____	Width _____	Vol _____	Locl _____	
Length 3.0	Remove _____	Drawn? YES	above _____	
Value II	_____	_____	below _____	
Photo # (1) 101266	Photo # (2) 101267	_____		
Written by: JRS	Checked by: JRZ	_____		

Unit _____	Phase _____	Stage _____	Stratum _____	PoM _____
-------------------	--------------------	--------------------	----------------------	------------------

Summary _____

Opened: See Card #1.

Limits (N) See Card #1

(S) See Card #1

(E) See Card #1

(W) See Card #1

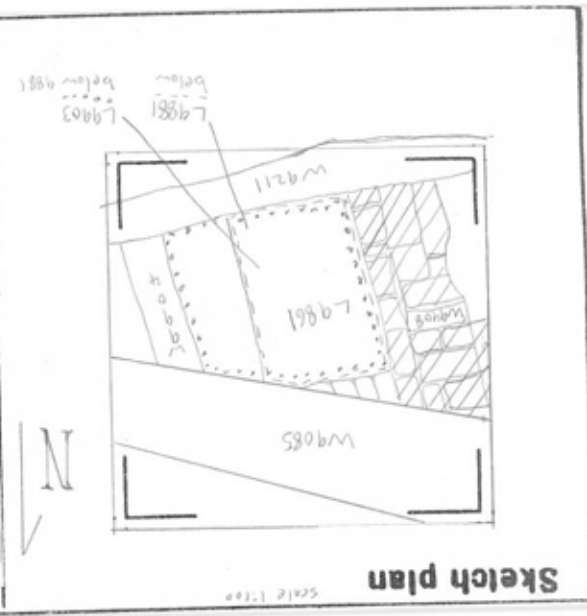
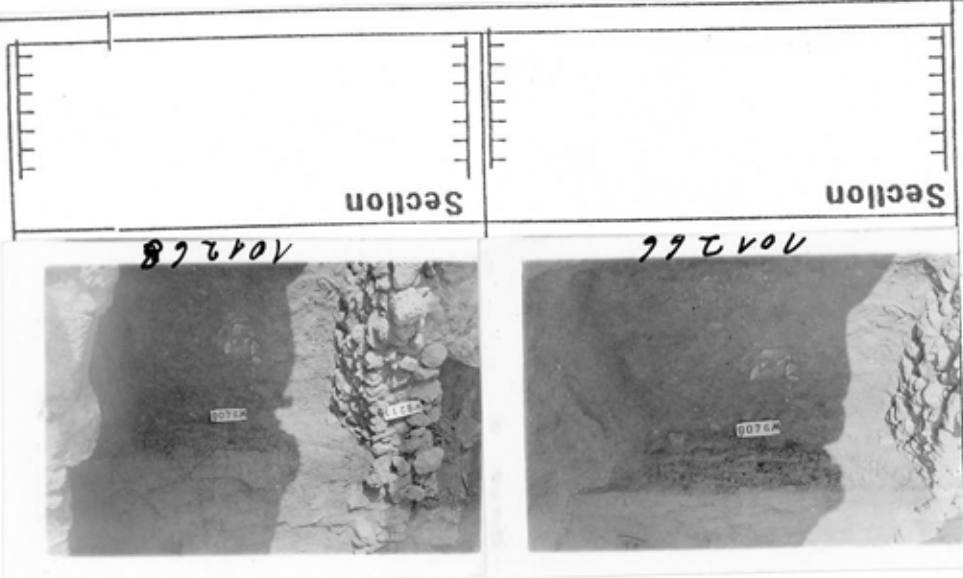
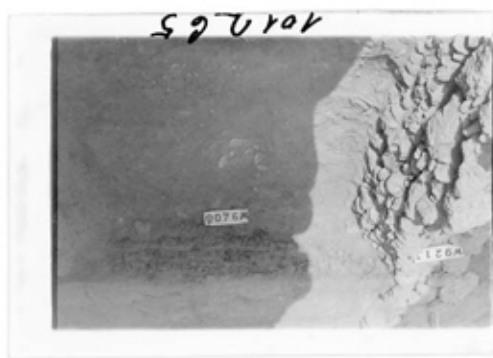
Closed: Not closed, end of season.

Matrix: See Card #1. Seven courses of brick were uncovered during the course of excavation, averaging ~10cm thick with a plaster face. Courses of brick were not flush with one another along the eastern face, indicating possible earthquake disturbance, since plaster was only on vertical face of brick, not exposed horiz. surface of brick, indicating movement.

Relations: New relations revealed 93 seasons: W9408 abuts W9211. W9408 cuts the material of L9861, L9881, and L9903, since they are all of the same matrix and L9903 extends below W9408.

Additional Photo #s: 101268, 101269, 101270

Additional Observations/Value: Large Iron Age



Locus W 9408	Dor 19.4	Fld G.	Sq A. J. 34	Loc. type Wall (card 3) stone part
Open Date 0.5/09/94	High at 14.05 Sr	Low at 13.57 G	Seals: _____	
Close Date 0.5/08/94	12.90 Si	12.68 M	Sealed by: _____	
Floor: type _____	Length 3.0	Width 0.5	Vol _____	Loci _____
Value _____	Remove _____	Drawn? Yes		above _____
Photo #(1) 117379	Photo #(2) 117380			Loci _____
Written by: _____	Checked by: _____			below _____

Unit _____	Phase _____	Stage _____	Stratum _____	PoM _____
------------	-------------	-------------	---------------	-----------

Summary _____

Opened: Removed mudbrick "skin" of W9408 and lo and behold there was a stone core inside, unless specified as "mudbrick part of 9408", the discussion here refers to the stone core.

Limits (N) Debris below 9085

(S) W9211

(E) Mudbrick of W9408, 18014, 18034, 18053, 18054, 18059, 9974

(W) Mudbrick of W9408, 18041, 18085

Closed: Floating on west side, but not on East, Not removed at end of season; not closed

Matrix: The mudbrick part of W9408 is a "skin" around a stone core. On the East the mudbrick covers the stones to a depth of ca 13.17, on the west to ca. 13.25. The stone core is made of huge boulders; the largest 1.0x0.5x0.4 m, typically ca 50x40x30cm. 2 courses and a possible 3rd course were visible on the east, but only 2 courses on the west where it has begun to float.

Relations: The stone core of W9408 was covered and sealed by the mudbrick part of W9408. On the North W9408 seems to extend into the debris below W9085, though this is unclear because W9408 is preserved at a much lower level there than to the South.

On the South W9408 abuts W9211. W9211 floats high up west of W9408, while to the east it continues down to the lowest point reached in W9408 so far.

On the East the mudbrick part of W9408 reaches the stone part of W9408. (18014) is cut by the mudbrick part of W9408, as is the top of 18034. 18034 may reach the stone core of W9408 as may 18053, 18054 and 18059. It is unclear if "bench" L9974 reaches W9408 as there is a small amount of debris between 9974 and W9408 which could, or could not, be part of the "bench". Note that in situ, mostly intact, pottery was found in 18034 and 18059 leaning against the stone part of W9408.

On the West pit: L18004 cuts the mudbrick part of W9408 without reaching the stone core. F18004 is said to reach the stone part of W9408. F18004 is at ca. 13.73-13.65; evidently the mudbrick skin was not of uniform depth on the west face as it was at 13.17 on the north. L18041 and F18041 reach the stone part of W9408. W9408 immediately floats below F18041 in L18085.

The functional relation between the stone and mudbrick parts of W9408 are unclear. The stone part may have served as a foundation for the bricks in one constructional phase, or the bricks could have been added later as the floor levels in the adjoining rooms rose.

Additional Photos: See Isra, 117377-378, 117215-218, 117401, 117667-674

Additional Observations/Value: Size of stones unique in G. Also stones used as core for brick is also unique.

Locus

W 19408

Sketch plan



117401



117215

Section



Section

