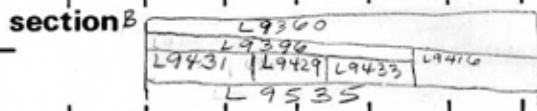
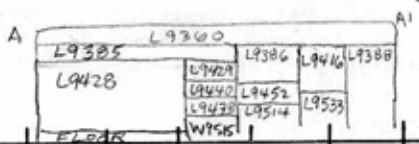


TEL DOR 19 89 field 6 square A634 phase (in area): LOCUS L9416
 date opened 10/07/89 level 1626 date closed 02/08/89 level 1583 floor level 1568 type of locus ROBBER TRENCH
 loci above L9360 loci below L9533 L9534 sealed by L9535 L9536

graphic description

= L9416 - L9385
 = L9396 = L9384 = L9433



final locus no.	arch. unit / logical area	stage (in sq.)	final STRATUM
-----------------	---------------------------	----------------	---------------

Summary:

Description: OPENED: WHEN NEW LOCI OPENED BELOW SURFACE SOIL [L9360]; MATERIAL OF [L9416] IS VERY SIMILAR TO THAT OF [L9360] UGH OUT
 DEFINITION / LIMITS: BOUNDED BY NORTH, EAST AND SOUTH WALLS [L9387] TO THE NORTH, [L9388] TO THE EAST; [L9385], [L9386], [L9452], [L9396], [L9384], [L9433] TO THE WEST.

CLOSED: UPON DEFINING ^{THREE} ROBBER TRENCHES BELOW [L9416]; [L9536] TO THE NORTH, [L9535] TO THE SOUTH, AND [L9533], [L9534] - SEPARATE FILLS WITHIN ONE ROBBER TRENCH

MATRIX: MEDIUM-PACKED BLACK-BROWN SOIL WITH SMALL ROCKS, TESSERAE, FEW SHELLS, ROOFTILE FRAGMENTS
RELATION TO OTHER ELEMENTS: CUTS [L9386], [L9452], [L9388], [L9396], [L9433], [L9385], [L9387]

MATERIAL OF [L9533] IS VERY SIMILAR TO THAT OF [L9416]
 [L9416] APPEARS TO REPRESENT A UNIFORM FILL OVER ^{parts of} THREE ROBBER TRENCHES [L9536], [L9535], AND [L9533 - L9534]. These 3 robber trenches seem to rob a series of walls enclosing a basement of a Roman period building which is also found to the W in AH 34, which also had robbed out walls.

photos

- reason for opening
- definition / limits
- reason for closing
- relation to other elements
- working photos, nos:
- publication photos
- architects permission

written by A.M. ABRANTES checked by J. Zorn

