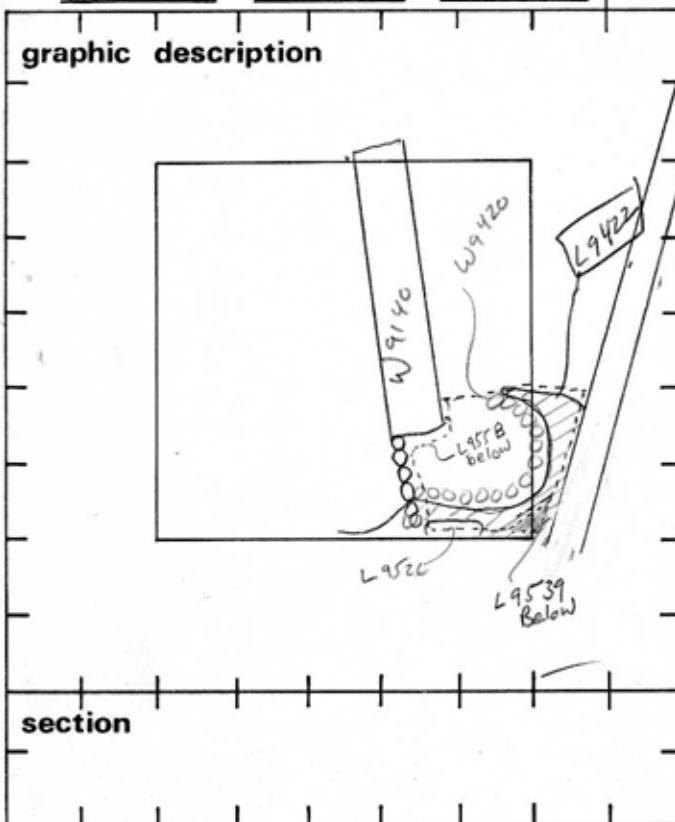


TEL DOR 19 89 field G square AJ.3.2 phase (in area): LOCUS L19.4.2.2

date opened 07/07/89 level 1512 date closed 07/08/89 level 1368 floor level \_\_\_\_\_ type of locus Section supporting wall.

loci above 9415 9376 loci below 9539 9558 sealed by \_\_\_\_\_



final locus no. \_\_\_\_\_ arch. unit / logical area \_\_\_\_\_ stage (in sq.) \_\_\_\_\_ final STRATUM \_\_\_\_\_

**Summary:**

**Description:** opened: To Remove Soil Supporting W9420.  
 Def/Lim: North by extent of Pedestal L9000, East & South by Baulks, West by South extension of W9140.

**MATRIX:** A Mix of Soils - Mud Brick, Ash Pt soil, Brown sandy soil.  
 Closed: Reached Level of Bottom of Sump

**Relations:** Reaches W9420 on all sides. Reaches Floor/Locus L9526 & includes portions of L9539 below.

This locus was essentially an expanded section cleaning, which includes very small portions of numerous loci.

**photos**

- reason for opening
- definition / limits
- reason for closing
- relation to other elements
- working photos, nos:
- publication photos
- architects permission

written by R. Lindsfrom checked by J. Zorn

\_\_\_\_\_

\_\_\_\_\_

\_\_\_\_\_

\_\_\_\_\_

\_\_\_\_\_

\_\_\_\_\_

\_\_\_\_\_

\_\_\_\_\_

LOCUS L19442

## BASKET LIST

basket no.	level	str def	cont	R +	periods	comments
94412	- - -	1301	10506			Pottery
94413	- - -	1309				Grindstone
94448	- - -	1314				Faience Bead Frag.
94449	- - -	1301	00605			Pottery 1-05
94483	- - -	1301	005			Pottery in Strata 1 (south)
94484	- - -	1301	006			Pottery in Strata 2 (south)
94501	1412	1309				Grinding Bowl Frag.
94507	- - -	1301	00508			Pottery