

TEL DOR

19 89

field

G

square

A.933

phase (in area):

CARD 1

LOCUS L9426

date opened

18/07/89

level

N: 16.09
S: 16.04

date closed

21/07/89

level

16.00

floor level

type of locus

PIT

loci above

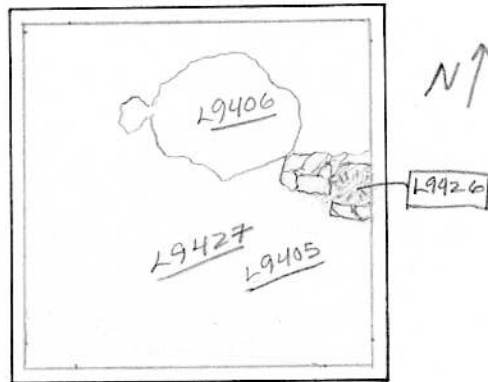
L94.05

loci below

NONE YET

sealed by

graphic description



final locus no.

arch. unit / logical area

stage (in sq.)

final STRATUM

Summary:

Description:

[REASON FOR OPENING]: CAME DOWN ON ROCK AND ASH AREA WHEN EXCAVATING [L9405].

[DEFINITION/LIMITS]: BOUNDED BY EAST BAILUK; ON SOUTH AND NORTH BY [L9427]. FLAT ROCKS BOUNDED THE WEST EDGE.

[MATRIX]: GREY ASHY SOIL CONTAINING STONES APPROX 20 CM. AND LESS.

[REASON FOR CLOSING]: NOT CLOSED; END OF SEASON.

[RELATION TO OTHER ELEMENTS]: UNDERLYING [L9405]. CUTS INTO [L9427]. Relation to stones unclear; seems to overlie them in part.

section

photos

- reason for opening
- definition / limits
- reason for closing
- relation to other elements
- working photos, nos: 48366
- publication photos
- architects permission

written by R. BORSTADchecked by J. Zorn

REF. CONTINUATION CARD FOR 1992 SEASON

S.S.R.

Locus LW 9426	Dor 19 92	Fld G ₁	Sq A 633	Loc. type POSSIBLE PAVEMENT
Open 18/07/89	Date	High at 16.09 N ₁	Low at 16.04 S ₁	Seals: 9803
Close 28/07/92		High at 16.015 W ₁	Low at 15.915 E ₁	Sealed by:
Floor: type				Locl 9405
Length 0.7m	Width 0.6	Vol		above
Value 1	Remove 28/07/92	Drawn? YES		below 9806
Photo #(1) 86540		Photo #(2) 86538		
Written by: SSR		Checked by: JRZ		

Unit	Phase	Stage	Stratum	PoM
Summary				

Opened: AT BEGINNING OF SEASON AFTER REMOVAL OF WINTER WASH. ORIGINALLY OPENED 1989 SEASON.

Limits (N) BOUNDED BY L9427

(S) BOUNDED BY L9427

(E) BOUNDED BY EAST BULK

(W) BOUNDED BY L9427

Closed: THE FIVE STONES WERE REMOVED WHEN IT WAS DISCOVERED THAT THEY WERE FLOATING

Matrix: CONSISTED OF FIVE FLAT IRREGULAR STONES, RANGING FROM 15cm TO 40cm ONLY ONE COURSE HIGH, AND A ROUGHLY CIRCULAR ASHY "PIT" ~30cm IN DIAMETER.

Relations: LW9426 WAS COVERED BUT NOT SEALED BY L9405. THE ASHY "PIT" SECTION OF LW9426 COVERS BUT DOES NOT SEAL L9806. THE FIVE STONES SECTION OF LW9426 COVERS AND SEALS L9803. LW9426 IS PART OF A POSSIBLE PAVEMENT OR THE LOWER COURSE OF A FOUNDATION FOR A WALL. THE ASHY "PIT" AREA OF LW9426 JUST TO THE EAST OF THE 5 STONES WAS PROBABLY CREATED AFTER THE REMOVAL OF OTHER PAVING STONES. THIS WOULD EXPLAIN THE DIFFERENCE IN SOIL MAKE-UP. THIS ASH STOPS ~3cm BELOW THE BOTTOM LEVEL OF THE STONE COURSE. THE 5 STONES OF THE PAVEMENT MADE UP THE ONLY COURSE OF STONES AND WAS FLOATING. IF LW9426 WAS A PAVEMENT, THEN IT MUST ORIGINALLY BEEN LARGER, COVERING A WIDER EXTENT OF L9757, L9756, AND L9772. ITS FULL SIZE CANNOT BE DETERMINED. L9405, L9427, L9757, L9758, AND L9772 MAY ALL HAVE BEEN ROBBER TRENCHES RESPONSIBLE FOR THE REMOVAL OF THIS POSSIBLE PAVEMENT, LEAVING ONLY THE 5 STONES FOUND. IF L9426 WAS A PAVEMENT, IT MAY HAVE REACHED THE FOUNDATION W9792. THERE IS NO DIRECT CONNECTION FOR THIS, HOWEVER, DUE TO THE ROBBING OUT OF W9792 BELOW W9426 THERE IS A SLIGHT POSSIBILITY THAT L9426 COULD BE THE LAST COURSE OF A WALL WITH THE REST OF IT ROBBED OUT, ALTHOUGH WHY THE ROBBERS WOULD HAVE ROBBED OUT EVERYTHING EXCEPT FOR THIS FINAL COURSE IS UNKNOWN AND A BIT UNREASONABLE.

Additional Observations/Value: AS A POSSIBLE PAVEMENT OR PART OF A FOUNDATION L9426 HAS POTENTIALLY HIGH VALUE

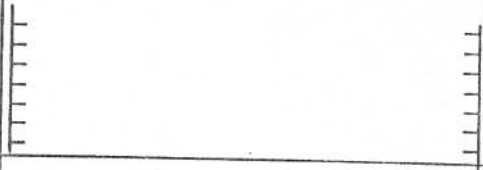
Sketch plan



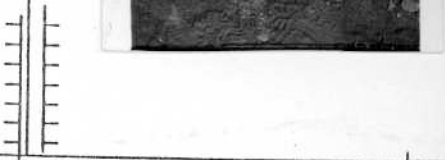
- - L9806
- ▨ - L9803
- ▩ - L/W9426
- ▧ - L9427
- ▦ - L9773
- L9405
- L9821
- L9758



Section



Section



86538