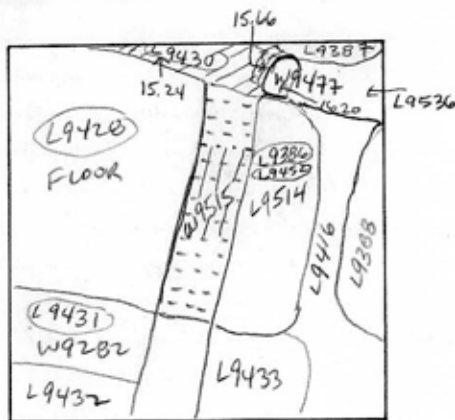


TEL DOR 1989 field G square AG34 phase (in area): LOCUS L9430
 date opened 20/07/89 level 1615 date closed 31/07/89 level 1524 floor level _____ type of locus ROBBER TRENCH OVER [W9477]
 loci above L9385 L9429 loci below W9477 L sealed by _____

graphic description



- L9429, L9478
- L9440

section

photos

- reason for opening
- definition / limits
- reason for closing
- relation to other elements
- working photos, nos:
- publication photos
- architects permission

written by A.M. ABRALDES checked by J. Zorn

final locus no. _____ arch. unit / logical area _____ stage (in sq.) _____ final STRATUM _____

Summary:

Description: OPENED: UPON REACHING CHANGE IN SOIL BELOW [L9385] FROM SANDY LIGHT BROWN TO DARK BROWN WITH MUCH RUBBLE

DEFINITION/LIMITS: BOUNDED BY NORTH BALK; [L9429], [L9428], [L9386] TO THE SOUTH; [W9477] TO THE EAST.

CLOSED: UPON REACHING FLOOR [L9428] AND PLASTERED CORNER OF [W9477] AND [W9515]

MATRIX: DARK BROWN SOIL WITH MUCH RUBBLE ON TOP FEW TESSERAE, SHELLS

RELATION TO OTHER ELEMENTS: CUTS [L9428] AND FLOOR [L9428]; REACHES [L9478]

WHICH COMPRISE ROBBER TRENCH OVER [W9515] CONTINUES INTO NORTH BALK, ROBBER TRENCH

MATERIAL CONTINUES BELOW LEVEL OF FLOOR [L9428] CONTINUATION OF ROBBER TRENCH OVER [W9477] TO THE EAST IS [L9536]

