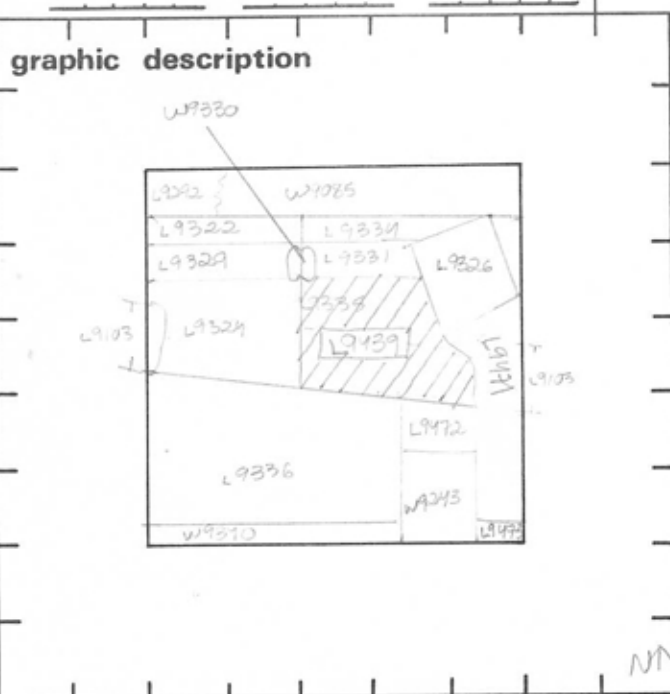


TEL DOR 1989 field G square A.K.3.9 phase (in area): LOCUS 4943.9
 date opened 19/07/89 level 1583 date closed 19/07/89 level 1572 floor level _____ type of locus FILL
 loci above 19335 19103 loci below 19469 sealed by 19103



section

final locus no. _____ arch. unit / logical area _____ stage (in sq.) _____ final STRATUM _____

Summary: _____

Description: _____

REASON FOR OPENING: REMOVED DRAIN [L9103]. FOUND LOIL BENEATH DRAIN AND TO NORTH [L9335] TO BE MADE UP OF SOME ORANGE MATERIAL.

MATRIX: ORANGE SOIL, SOMEWHAT LOOSE CONTAINING KUR KAR.

DEFINITION/LIMITS: PARTIALLY SEALED BY DRAIN [L9103] ON S. ON N. DRAIN [L9335] WHICH DISAPPEARED DURING WINTER BOUNDED BY [L9331] ON N. ON EAST BY [L9471] AND [L9326]. ON S. BY [L9336] ON W BY [L9324].

REASON FOR CLOSING: COLLAPSED [L9334], [L9337] AND [L9439] INTO [L9471]. AFTER ROBBED TRENCH [L9331] DISAPPEARED AND SOIL BECAME UNIFORM ORANGE, SAME AS [L9439] AND [L9334].

photos

- reason for opening
- definition / limits
- reason for closing
- relation to other elements
- working photos, nos:
- publication photos
- architects permission

written by W. SWANSON checked by J. Zorn

RELATIONS: PARTIALLY SEALED BY [L9103] (DRAIN). CUT BY [L9537] (ROBBED TRENCH) ON N. CUT BY [L9471] ROCK PILE ON E. REACHES [L9336] ON S. AND CUT BY [L9472] ON S. CUTS [L9324] ON W. COVERED BY [L9334].

