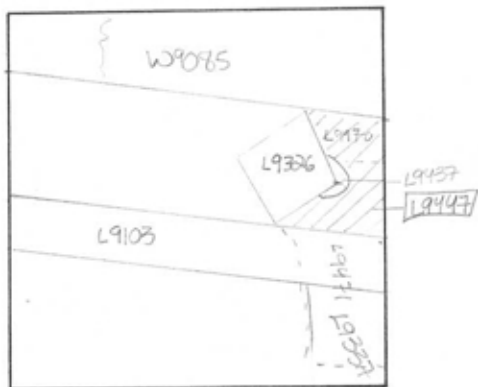


TEL DOR 1989 field G square A.K.34 phase (in area): LOCUS 19.4.47  
 date opened 19/07/89 level 1599 date closed 20/07/89 level 1581 floor level \_\_\_\_\_ type of locus STONEPILE  
 loci above L9.3.0.3 E.8.A.L.K loci below L9.4.7.0 L9.4.7.1 sealed by \_\_\_\_\_

graphic description



final locus no. \_\_\_\_\_ arch. unit / logical area \_\_\_\_\_ stage (in sq.) \_\_\_\_\_ final STRATUM \_\_\_\_\_

Summary:

Description:

REASON FOR OPENING: NOTICED DIFFERENCES IN SOIL BETWEEN ROCK PILE/STONE PILE [L9447] AND ASH PIT [L9437].

MATRIX: ROCKY SOIL DARK ORANGE-BROWN

DEFINITION/LIMITS: BOUNDED ON E. BY BALK ON N. BY [W9085] ON W. BY [L9326] AND [L9437] ON S. BY DRAIN, [L9103].

REASON FOR CLOSING: I CAME DOWN ON END OF ASH PIT MATERIAL [L9437] AND LIGHTER ORANGE SOIL IN N-E CORNER OF SQUARE, [L9470] ROCK PILE, UNDER [L9437], [L9447] AND [L9103] BECAME [L9447].

RELATIONS: CUT BY [L9437], [L9103], [W9085], REACHES [L9326], COVERS [L9470] CONTINUES AS [L9471]. ON OTHER SIDE OF DRAIN IS [L9337].

DISTURBANCE: POSSIBLE INTRUSION OF WINTER WASH.

section

photos

- reason for opening
- definition / limits
- reason for closing
- relation to other elements
- working photos, nos:
- publication photos
- architects permission

written by W. SWANSON

checked by J. Zorn

