

TEL DOR

19

89

field

G

square

AK32

phase (in area):

1B

LOCUS W19456

date opened

21/07/89

level

14.76

date closed

03/08/89

level

14.38

floor level

type of locus Rubble m

WALL / RT L9510

loci above

9175

loci below

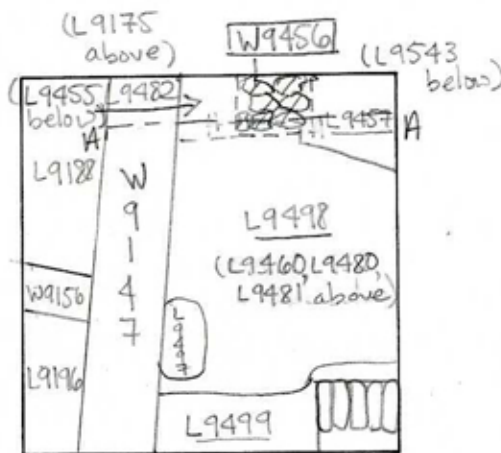
9543

sealed by

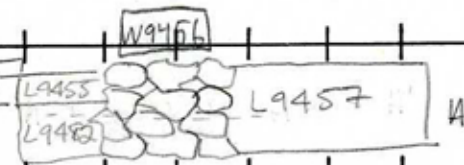
graphic description



1:100



section



photos

- reason for opening
- definition / limits
- reason for closing
- relation to other elements
- working photos, nos: 48522
- publication photos
- architects permission

written by

Laurie Mills

checked by

J Zirn

final locus no.

arch. unit / logical area

stage (in sq.)

final STRATUM

Summary:

Description: REASON FOR OPENING: AFTER SQUARE CLEANING CAME DOWN ON RUBBLE PILE.

DEF./LIMITS: W9456 BORDERS THE NORTH BAULK. IN THE EAST IT REACHES L9457. IN THE SOUTH & WEST IT BORDERS THE PERSIAN PIT WHICH INCLUDES L9498, L9481, L9480, & L9460.

MATRIX: FOUR COURSE RUBBLE WALL (STONES ~ 15cm x 10cm RUBBLE) DIMENSIONS - .52m x .48m x .45m.

REASON FOR CLOSING: CAME DOWN TO LAST RUBBLE COURSE. SOIL BECAME DARK BROWN. (WALL REMOVED)

RELATIONS: W9456 IS DIRECTLY BELOW L9175 WHICH WAS NO LONGER VISIBLE AFTER TWO YEARS EROSION. IT IS DIRECTLY ABOVE L9543 / A FILL. L9457 A FILL & L9455 A PIT & L9482 THE FILL BELOW THIS PIT REACH W9456. W9456 MAY BE CUT BY THE UPPER LIMITS OF THE LARGE PERSIAN PIT (L9460, L9480, L9481) THOUGH IT IS ABOVE AN ASH LENSE IN L9518 & L9543 WHICH MAY BE THE LOWEST LIMIT OF THE PERSIAN PIT. THUS W9456 WOULD BE A LATER CONSTRUCTION THAN THE PERSIAN PIT. W9456 IS PROBABLY DISTURBED. THE EXACT RELATIONS BETWEEN W9456 AND

