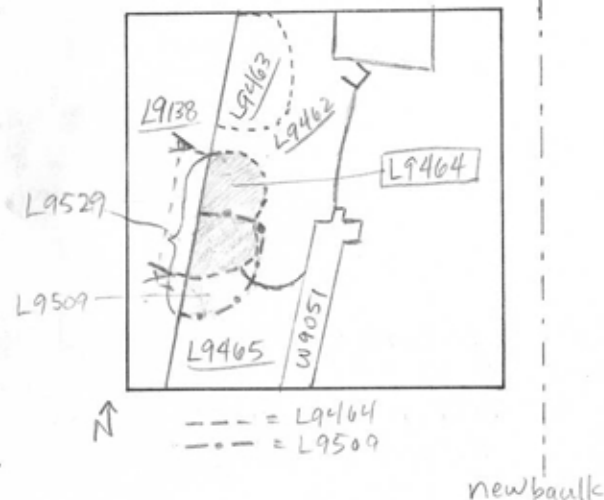
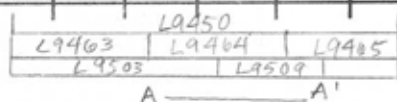


TEL DOR 19 89 field G square AI32 phase (in area): LOCUS 119.4.64
 date opened 24/07/89 level 14.92 date closed 31/07/89 level 14.63 floor level _____ type of locus Pit
 loci above L9450 loci below L9509 L9529 sealed by _____

graphic description



section



photos

- reason for opening
- definition / limits
- reason for closing
- relation to other elements
- working photos, nos:
- publication photos
- architects permission

written by R. Palmer

checked by J. Zorn

final locus no.	arch. unit / logical area	stage (in sq.)	final STRATUM

Summary:

Description:

Opening: In excavating L9450, came down upon 4 distinct areas of different-colored soil, each made into separate locus L9462 L9463 L9464 & L9465

Def & Limits: To W, bounded by L9138. To N & E bordered by L9462 and material below. To S, bordered by L9465 & L9509.

Matrix: Similar to that of L9463, although lesser amount of pottery, and soil is looser & darker in patches, particularly at SW edge. N. half contains mudbrick debris

Closing: Pit L9464 continues growing to S and SE, ie undercutting L9465, so decided to close both

Relations: Probably cuts L9462 and probably cut by L9138. Completely covered by L9450. We thought L9464 had reached bottom when we came down on mudbrick material / debris in the N half, and also saw that pit continued to grow

