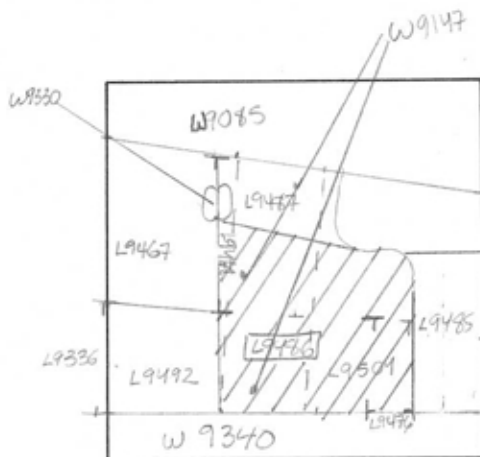


TEL DOR 1989 field G square A.K.3.4 phase (in area): _____
LOCUS L1948.6
 date opened 26/07/89 level 156.1 date closed 26/07/89 level 154.1 floor level _____ type of locus STRATIFIED ACCUMULATION
 loci above L9336 L9476 loci below W9147 L9504 sealed by _____
L9468

graphic description



final locus no.	arch. unit / logical area	stage (in sq.)	final STRATUM

Summary:

Description:

REASON FOR OPENING: [L9467] CAME DOWN ON BRIGHT ORANGE CLUMPED SOIL IN NORTH. REMAINING MATERIAL UNDER [L9467] [L9476] AND [L9336] COMPOSED INTO [L9476].

MATRIX: LIGHT ORANGE SOIL WITH VERY FEW ROCKS, SOME KIRKAR & DMC-BEIT

DEFINITION/LIMITS: BOUNDED BY [L9492] ON E; [W9340] ON S; [L9492] AND [L9467] ON W; [L9477] ON N.

REASON FOR CLOSING: CAME DOWN ON "PIA'S WALL", [W9147].

section

RELATIONS: COVERED BY [L9467] & [L9336], S. [L9480]. COVERS [L9504] AND [W9147]. CUTS [L9467]; CUT BY [L9480] UNTIL REACHES [W9340] REACHED BY [L9492] NO RELATIONSHIP TO [W9330]

photos

- reason for opening
- definition / limits
- reason for closing
- relation to other elements
- working photos, nos:
- publication photos
- architects permission

written by W. SWANSON

checked by J. Zorn

