

TEL DOR

1989

field

G

square

A.K.3.4

phase (in area):

LOCUS L194.89

date opened

26/07/89

level

1561

date closed

22/08/89

level

1515

floor level

type of locus

fill  
(MAURICE INSTALLATION)

loci above

L9469

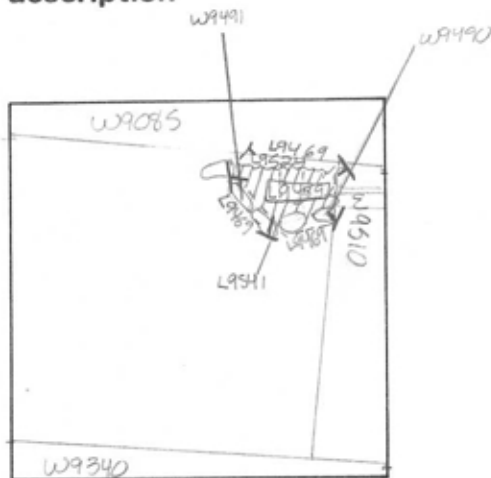
loci below

L9541

sealed by

L9326

graphic description



final locus no.

arch. unit / logical area

stage (in sq.)

final STRATUM

Summary:

Description:

REASON FOR OPENING: EXCAVATED TO BOTTOM OF ASH-LAYER [L9469]; FOUND ROCK PILE ALONG [W9495] AND DARK CHOCOLATE LOOSE MATERIAL WITHIN THE 'MAURICE INSTALLATION' ROCK PILE BECAME [L9524], LOOSE FILL BECAME [L9499].

MATRIX: LOOSE SOIL, DARK CHOCOLATE (OLD DRAGON, SOME CHARCOAL, LITTLE POTTERY ONE LARGE ASHLER ROASTING IN MIDDLE.

DEFINITION LIMITS BOUNDED ON N BY [L9524], ON E BY [W9510], ON S-E BY [W9490], ON S-W BY [W9491].

section

REASON FOR CLOSING: CAME DOWN ON DARK SOIL MIXED WITH MUD-BRICK MATERIAL ACROSS [L9524], [L9499] AND UNDER WALL

photos

- reason for opening
- definition / limits
- reason for closing
- relation to other elements
- working photos, nos:
- publication photos
- architects permission

written by W. SWANKON

checked by J. ZORN

[W9490] BENEATH 'MAURICE INSTALLATION' COLLAPSED INTO [L9541]

RELATIONS: COVERED BY [L9469] (AN ASH LAYER DIRECTLY BENEATH 'MAURICE' [L9326]). REACHES [W9490], [W9491], [W9510] & [L9524]. IS THE FILL OF THE 'MAURICE INSTALLATION'. LOWERS PART OF [L9541]

