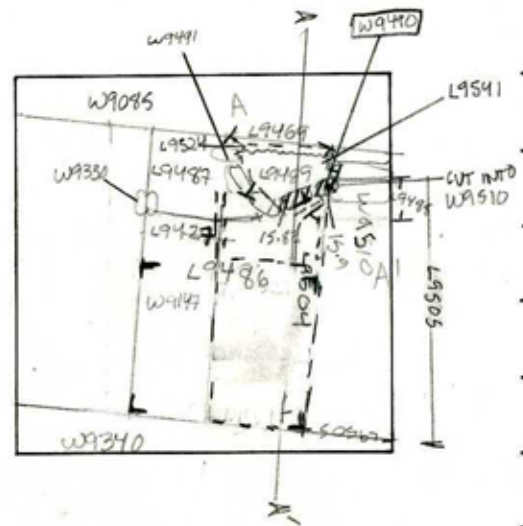


TEL DOR 1989 field lx square A.K.3.4 phase (in area): _____ LOCUS W19490

date opened 26/07/89 level L991 date closed 02/08/89 level L517 floor level _____ type of locus WALL MAURICE INSTALLATION

loci above L9469 loci below L9541 sealed by L9326

graphic description



final locus no.	arch. unit / logical area	stage (in sq.)	final STRATUM

Summary:

Description:

REASON FOR OPENING: CAME DOWN ON W9490, below L9469.

MATRIX: TWO ASHLER STRETCHERS (AVE. 38 cm x 25 width x 15 depth (cm) SITTING ON TOP OF ONE GIANT ASHLER (84 cm long x 41 cm deep x 31 cm wide). LOOSE DIRT BETWEEN STONES; NO KURKAR FOUNDATION.

DEFINITION/LIMITS: BOUNDED BY L9486, L9503 & W9510 TO E., L9471, L9486, L9574, L9527 TO S., BY W9491 TO W & L9469 TO N.

section

See Back

REASON FOR CLOSING: EXCAVATION REVEALED LOWEST COURSE IN W9490 AND WALL WAS REMOVED.

photos

- reason for opening
- definition / limits
- reason for closing
- relation to other elements
- working photos, nos: #4854
- publication photos
- architects permission

written by W. SWANSON checked by J. ZAYN

RELATIONS: W9490 IS COVERED BY L9469 (THE ASHLER DIRECTLY BENEATH 'MAURICE') THE 1st COURSE IN W9491 PARTIALLY COVERED BY W9490, THEY ARE ^{some what} contiguous. W9490 IS BUILT ON TOP OF AND CUT INTO W9510. DISTURBING W9510. W9490 IS REACHED BY L9487 W9490 CUTS L9486, AND L9504, L9471, L9495, L9505, L9487, ROMAN INSTALLATION. THE WALL W9490 COVERS S. PORTION OF L9541.

