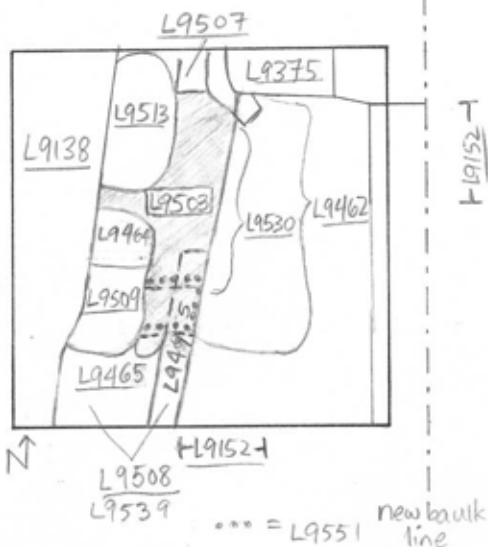


TEL DOR 19 89 field G square AI3.2 phase (in area): LOCUS 1L9503
 date opened 27/07/89 level N 14.87 / mid 14.86 / 514.84 date closed 02/08/89 level 14.65 floor level _____ type of locus Possible floor makeup & fill
 loci above L9462 L9495 loci below L9530 L9551 sealed by _____ below

graphic description



final locus no.	arch. unit / logical area	stage (in sq.)	final STRATUM

Summary:

Description:

Open: In excavating L9462 came down upon uniformly hard whitish surface that also extended into N half of L9495. This became L9503.

Def & Limits: To N, bordered by L9507 & material below, and by L9375. To E, bounded by L9152. To S, bordered by L9508. To W, bordered by L9464, L9509, & L9513.

Matrix: Hard, whitish soil, concentrated in N half of locus, approximately 2.5 m from N limits of Square AI32. This determined after 1st pick pass, so redefined limits of locus as given above. (1st pick pass extended from N limits of square southwards to area adjacent to S)

section

photos

- reason for opening
- definition / limits
- reason for closing
- relation to other elements
- working photos, nos:
- publication photos
- architects permission

written by R Calman checked by J. Zorn

Closing: In excavating L9503 & L9508 to S, also cut back section in both E & W baulks of earth pedestal. This revealed three distinct areas of disturbance: pit L9539, fill L9551 and fill L9530. L9530 & L9551 lay under L9503.

Relations: To N, L9503 reaches material below L9507. To E, L9503 may be the

