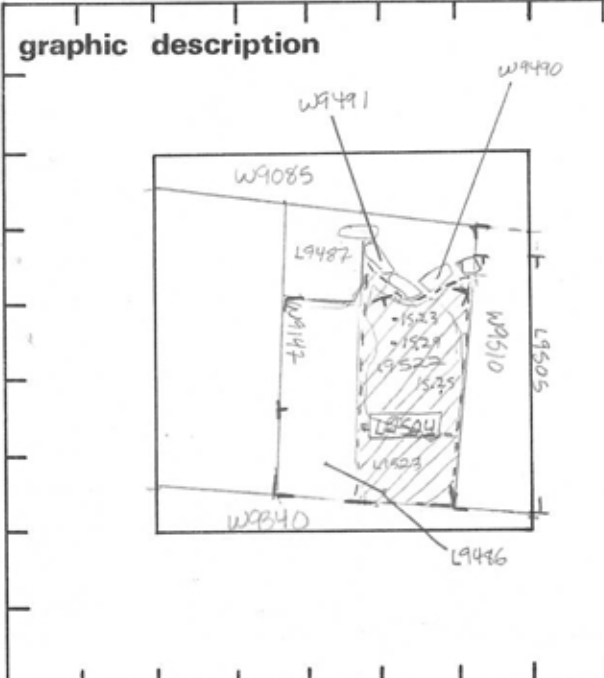


TEL DOR 1989 field G square A.K.3.4 phase (in area): LOCUS L19.5.04  
 date opened 27/07/89 level 1.538 date closed 01/08/89 level 1.519 floor level 1.529 1.523 type of locus FILL DOWN TO FLOOR  
 loci above L9496 loci below L9522 L9523 sealed by



final locus no.	arch. unit / logical area	stage (in sq.)	final STRATUM
-----------------	---------------------------	----------------	---------------

**Summary:**

**Description:**

REASON FOR OPENING: EXCAVATION REVEALED PIA'S WALL [W9147] ACROSS W. PORTION OF [L9496]. E PORTION BECAME [L9504]

MATRIX: GREY SOIL CONTAINING PLASTER FRAGMENTS AND MUCH POTTERY

DEFINITION/LIMITS: BOUNDED BY: ROBBER TRENCH [L9505] AND [W9510] ON E; WALL [W9340] ON S; [W9147] ON W; WALL [W9490] & [W9491] ON N.

REASON FOR CLOSING: CAME DOWN ON PLASTER FLOOR [L9504]. PORTION BENEATH FLOOR BECAME [L9522] NOT SEALED BY FLOOR [L9523]

RELATIONS: COVERED BY [L9496] COVER [L9523] & [L9522] FLOOR APPEARS TO BE CUT BY [W9147] WHICH IT DOES NOT REACH

section

photos

- reason for opening
- definition / limits
- reason for closing
- relation to other elements
- working photos, nos: #46501
- publication photos
- architects permission

written by W. SWANSON checked by J. ZORN

FLOOR MAY HAVE REACHED [W9510]. IT IS 1-2 CM FROM WALL NOW - THIS COULD BE DUE TO EROSION. FLOOR IS CUT BY [W9490]. FLOOR DOES NOT REACH [W9340], NO ESTABLISHED RELATIONSHIP. [L9504] REACHES [W9340] ALTHOUGH FLOOR DOES NOT. FILL REACHES [W9510] & [W9340] UNDETERMINED RELATIONSHIPS WITH [W9490] & [W9491] AND [W9147]; POSSIBLY CUT BY [W9147]

