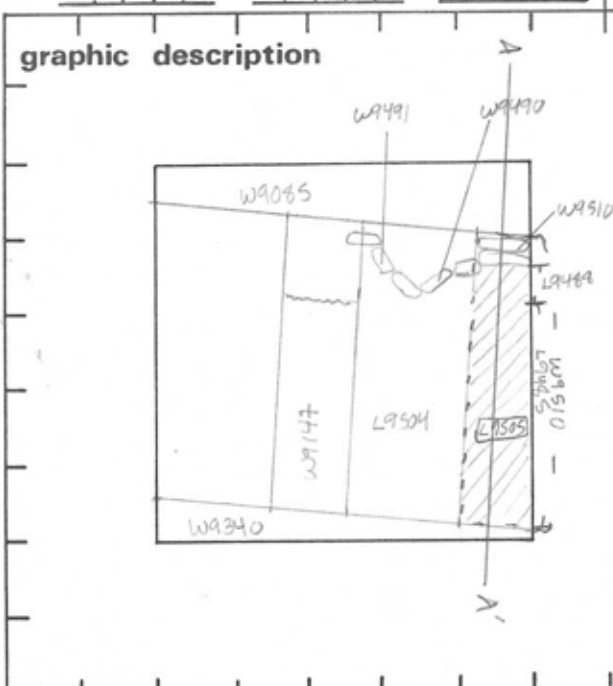


TEL DOR 1989 field 6 square A.K.3.4 phase (in area): _____ LOCUS L95.0.5
 date opened 27/07/89 level 154.2 date closed 27/07/89 level 153.3 floor level _____ type of locus Bedding for courses of wall?
 loci above L94.88 L94.85 loci below W9510 sealed by _____



section
 SEE BACK

photos

- reason for opening
- definition / limits
- reason for closing
- relation to other elements
- working photos, nos:
- publication photos
- architects permission

written by W. SWANSON checked by J. Zorn

final locus no.	arch. unit / logical area	stage (in sq.)	final STRATUM

Summary:

Description:

REASON FOR OPENING: CAME DOWN ON LOOSE, DARK CHOCOLATE SOIL CONTAINING SOME MUD-BRICK UNDER L9485 AND L9486

MATRIX: LOOSE DARK CHOCOLATE SOIL CONTAINING MUD-BRICK MATERIAL IN SPOTS.

DEFINITION/LIMITS: BOUNDED BY L9504 ON W, BAULK ON E, W9340 ON S AND W9510 ON N.

REASON FOR CLOSING: CAME DOWN ON W9510 UNDER ENTIRE LOCUS, A PIER & BLOCK WALL.

RELATIONS: COVERED BY ROCK PILEM ^{Robber French} L9485 AND L9486, which may be continuations of L9337 + L9477 between upper courses of W9510. Covers W9510. CUTS L9304, CUT BY W9490. MUD BRICK MATERIAL COMES FROM DIRECTLY ABOVE ^{2nd course of} W9510 AND IS MORTAR/BEDDING BETWEEN COURSES. RELATIONS UP TO W9340 UNCLAR WITHOUT REMOVAL OF W9340.

