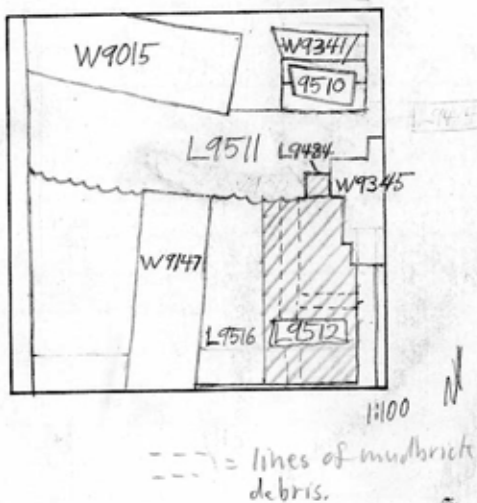


TEL DOR 19 89 field G square AK33 phase (in area): LOCUS L9512-

date opened 31/07/89 level 1496 date closed 4/08/89 level 1466 floor level _____ type of locus Possible Robber Trench / P.17

loci above L9451 loci below ~~None~~ (cleaning: 9603) sealed by _____

graphic description



final locus no. arch. unit / logical area stage (in sq.) final STRATUM

Summary:

Description: REASON FOR OPENING: CAME DOWN ON COMPACT, RED-BROWN SOIL BELOW L9451, same as in L9484, both collapsed into L9512.

DEF./LIMITS: BOUNDED ON THE N BY L9511, ON THE W BY L9516, ON THE S BY THE RAULK, ON THE E BY THE RAULK AND W9345.

MATRIX: COMPACT, RED-BROWN SOIL WITH FIST-SIZE KURKAR CHUNKS, FEW SHEARDS OR SHELLS.

REASON FOR CLOSING: CAME DOWN ON A GRAY, HEAVILY COMPACTED SOIL WITH MUDBRICK LINES IN IT, possibly debris of intersecting mudbrick walls. This marks the bottom of the possible robber trench.

RELATION TO OTHER ELEMENTS: L9512 IS APPARENTLY A ROBBER TRENCH FOR W9510. IT CUTS L9516, AN APPARENT PERSIAN PIT. IT IS CUT BY L9511, APPARENTLY A ROBBER TRENCH FOR W9003.

section

photos

- reason for opening
- definition / limits
- reason for closing
- relation to other elements
- working photos, nos:
- publication photos
- architects permission

written by R. Littlebridge checked by J. Zorn

