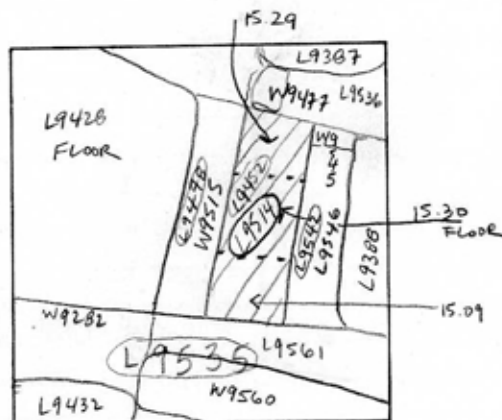


TEL DOR 19 89 field G square AG.34 phase (in area): LOCUS L9514  
 date opened 01/08/89 level 1567 date closed 08/08/89 level 1530 floor level 1530 type of locus STRATIFIED ACCUMULATION OVER FLOOR 9514  
 loci above L9452 loci below None yet sealed by

graphic description



DOTTED LINKS ENCLOSE FLOOR 9514

section

photos

- reason for opening
- definition / limits
- reason for closing
- relation to other elements
- working photos, nos:
- publication photos
- architects permission

written by A.M. ABRALDES checked by J. Zorn

final locus no. arch. unit / logical area stage (in sq.) final STRATUM

Summary:

Description: OPENED: UPON REACHING MASS OF RUBBLE BELOW L9452

DEFINITION/LIMITS: BOUNDED BY L9478, W9515 TO THE WEST; L9536, W9477 TO THE NORTH, L9533, L9534, L9542 TO THE EAST, L9535 TO THE SOUTH

CLOSED: UPON REACHING ASH FLOOR IN CENTER OF L9514

MATRIX: MEDIUM-PACKED REDDISH BROWN SOIL WITH MUCH RUBBLE AND A FEW SQUARED BLOCKS, TESSERAE, CEMENT CHUNKS, MANY CHUNKS OF <sup>YELLOW</sup> CHARGE FEW SHELLS; HARD CLAYEY SOIL AT NORTH END OF LOCUS WITH ASH AND MUDBRICK DEBRIS

RELATION TO OTHER ELEMENTS: CUT BY L9478,

ROBBER TRENCH OVER W9515

CUT BY L9533, L9534, L9542 ROBBER TRENCH OVER W9545

CUT BY L9535; ROBBER TRENCH OVER W9282 AND W9560

CUT BY L9536, ROBBER TRENCH OVER W9477

FLOOR 9514 CUT AT NORTH

AND SOUTH; CUT AT EAST BY

L9542, ROBBER TRENCH OVER W9545

AT NORTHWEST CUT BY L9478, ROBBER

TRENCH OVER W9515, AT SOUTHWEST

REACHES W9515, REACHES L9560

FLOOR 9514 IS AT THE SAME ELEVATION

AS FLOOR 9428, W9545 IS ON THE SAME

ORIENTATION AS W9515: THIS IT APPEARS

THAT THE TWO ROOMS BELONG TO THE SAME

CONTINUED →

