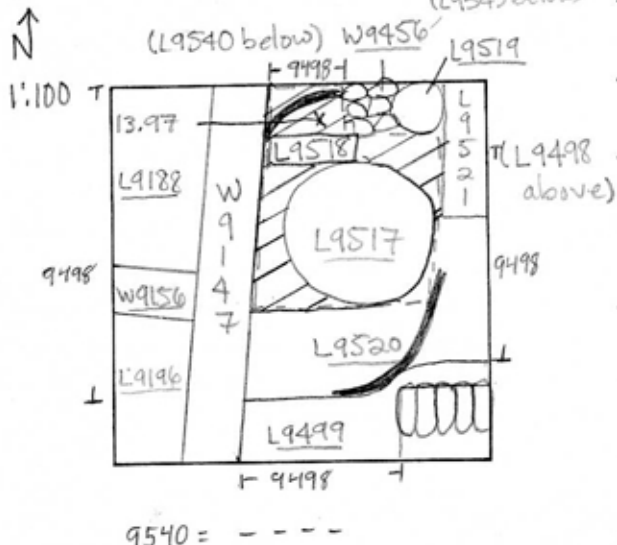


TEL DOR 19 89 field G square AK32 phase (in area): 4 LOCUS 119518
 date opened 01/08/89 level 14.12 date closed 02/08/89 level 13.97 floor level _____ type of locus PIT = L9460
 loci above 9498 loci below 9540 sealed by _____

graphic description



final locus no.	arch. unit / logical area	stage (in sq.)	final STRATUM

Summary:

Description: [REASON FOR OPENING]: REACHED BOTTOM OF PIT [L9497] ;
 FOUND NEW PIT IN CENTER OF SQUARE [L9517].

DEF./LIMITS: [L9518] BORDERS THE NORTH BAULK ; REACHES THE SOIL UNDER
 [L9454] IN THE WEST. IN THE NORTH AND EAST IT BORDERS [L9543] [L9519] ;
 [L9521]. IN THE SOUTH IT BORDERS [L9520] AND IN THE SOUTH-EAST IT
 SURROUNDS PIT [L9517].

MATRIX: HARD LIGHT BROWN SOIL W/ LITTLE POTTERY ; CIRCULAR GREY ASH LINE.
 (SAME AS [L9520]).

REASON FOR CLOSING: CAME TO BOTTOM OF PIT [L9517].

RELATIONS: [L9518] IS DIRECTLY BELOW [L9498] WHICH WAS PART OF THE

LARGE PERSIAN PIT. IT IS DIRECTLY ABOVE [L9540] WHICH
 MAY BE THE BEGINNING OF IRON AGE FILL. [L9518] IS CUT
 BY PIT [L9517]. THE END OF THE PERSIAN PIT. [L9518]
 ALSO CONTAINS A CIRCULAR ASH LINE-LENSE WHICH MAY
 MARK THE PHYSICAL BOUNDARY OF THE PERSIAN PIT. THIS
 ASH LINE-LENSE IS ALSO FOUND IN [L9520] WHICH BORDER
 [L9518] AND IS MOST LIKELY PART OF THE SAME FEATURE
 (JUST SEPARATED BECAUSE PIT [L9517] LIES BETWEEN
 THEM). FURTHERMORE THIS ASH LENSE EXTENDS INTO
 [L9543] WHICH MAY ACTUALLY BE THE SAME FEATURE

section

photos

- reason for opening
- definition / limits
- reason for closing
- relation to other elements
- working photos, nos:
- publication photos
- architects permission

written by Law Hill checked by J. Zarn

