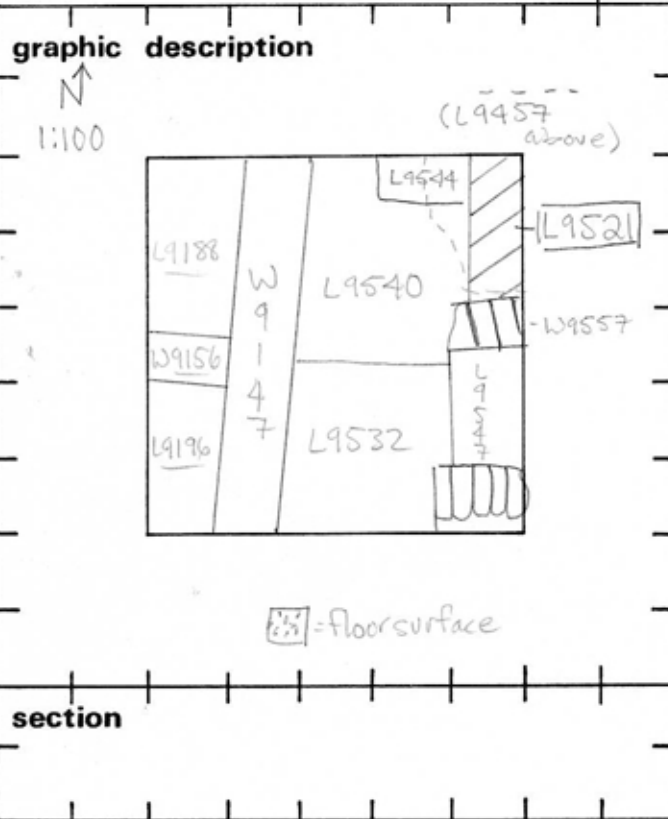


TEL DOR 19 89 field G square AK 32 phase (in area): 6 LOCUS L19521
 date opened 01/08/89 level 14.28 date closed 09/08/89 level 13.93 floor level _____ type of locus WALL COLLAPSE
FILL (MUDBRICK DEBRIS)
 loci above 9457 loci below L9884 sealed by _____



| final locus no. | arch. unit / logical area | stage (in sq.) | final STRATUM |
|-----------------|---------------------------|----------------|---------------|
| | | | |

Summary:

Description: REASON FOR OPENING: CAME DOWN ON REED MAT AND MUDBRICK DEBRIS.

DEF./LIMITS: L9521 BORDERS THE NORTH & EAST Baulks. IN THE WEST IT BORDERS L9544 & L9540. TO THE SOUTH IT BORDERS W9557

MATRIX: HARD RED/BROWN SOIL W/ MUDBRICK & REED MAT DEBRIS AND SOME RUBBLE.

REASON FOR CLOSING: END OF SEASON - NOT CLOSED

RELATIONS: L9521 IS DIRECTLY BELOW FILL L9457. LOCI BELOW NOT YET DETERMINED. L9521 REACHES FILL L9544 AND IS CUT BY L9540. L9521 BORDERS AND MAY REACH

photos

- reason for opening
- definition / limits
- reason for closing
- relation to other elements
- working photos, nos: 48522
- publication photos
- architects permission

written by Sam Miller checked by J. Zorn

W9557. ONLY TWO DISASSOCIATED MUDBRICKS WERE FOUND IN L9521 THOUGH THERE IS MUCH MUDBRICK DEBRIS. ALSO THE REED MAT MATERIAL IS ONLY FOUND IN THE UPPER PARTS OF L9521 (14.28-14.10) AND IT WAS PROBABLY FROM A TUMBLED WALL SINCE THE REED REMAINS WERE NOT IN PARALLEL LINES. L9521 IS PROBABLY DISTURBED.

