

TEL DOR

1989

field

G

square

A.K3.4

phase (in area):

LOCUS L19527

date opened

level

date closed

level

floor level

type of locus

01/08/89

1514

02/08/89

1499

MUD BRICK MATERIAL - FALL

loci above

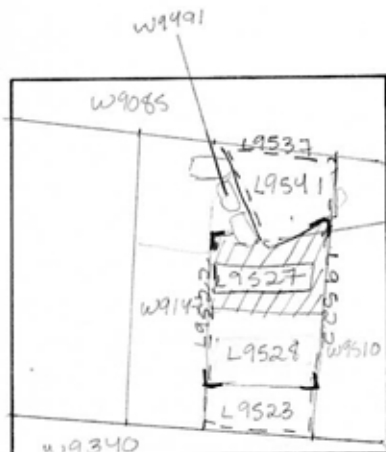
L9522

loci below

L9537

sealed by

graphic description



final locus no.

arch. unit / logical area

stage (in sq.)

final STRATUM

Summary:

Description:

REASON FOR OPENING: CAME DOWN ON MUD BRICK MATERIAL MIXED WITH DARK SOIL IN NORTH HALF OF [L9522] AND CONTINUED LOOSE ASH AND PLASTER IN S. HALF. ASH AND PLASTER BECAME [L9527], MUD BRICK MATERIAL BECAME [L9527]

MATRIX: MUD BRICK MATERIAL MIXED WITH DARK SOIL. LITTLE POTTERY.

DEFINITION LIMITS: BOUNDED ON E BY [W95107], ON W. BY [W9147], ON N BY [L9541] ON SOUTH BY [L9528].

section

REASON FOR CLOSING: CAME DOWN ON SOIL CONTAINING SOME MUD BRICK MATERIAL AND ROCKS UNDER [L9523], [L9527], [L9529] AND [L9541], COLLAPSED INTO [L9537].

photos

- reason for opening
- definition / limits
- reason for closing
- relation to other elements
- working photos, nos:
- publication photos
- architects permission

written by W. SWANSONchecked by J. ZORN

RELATIONS: COVERED BY [L9522] POSSIBLY CUT BY [L9528]. SAME AS SEALED LOCUS [L9541] (MAURICE INSTALLATION). REACHES [W9147] / PEDESTAL. CUT BY WALL [W9510]. COVERS PORTION OF [L9537] IS THIS MUD BRICK MATERIAL WASHED OFF [W9212] / [A134]? J2. 89. [9528] + [9523] MAY BE PART OF A PIT CUTTING [9527] EQUATION W/ MATERIAL INSIDE MAURICE INSTALLATION BASED ON SIMILARITY IN SOIL AND POTTERY CONTENT.

