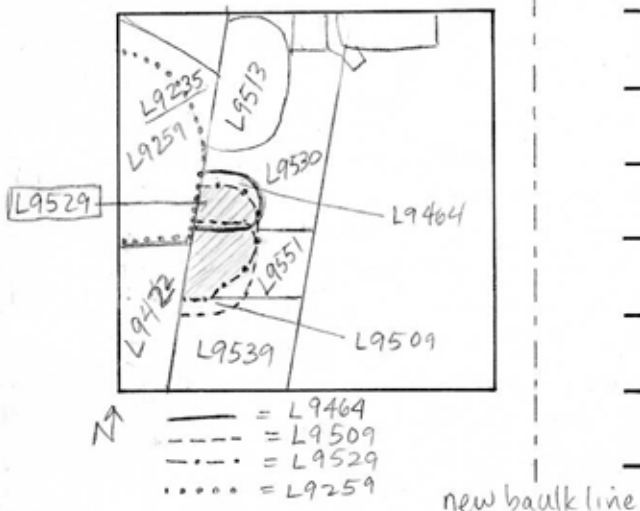


TEL DOR 19 89 field G square AI.3.2 phase (in area): LOCUS L9529
 date opened 02/08/89 level mid 14.44 date closed 11/08/89 level 14.11 floor level _____ type of locus Pit
 loci above L9464 L9509 loci below W9295? sealed by _____

graphic description



section

final locus no.	arch. unit / logical area	stage (in sq.)	final STRATUM

Summary:

Description:

Open: Collapsed pits L9464 and L9509 into one pit because material contained therein the same

Def & Limits: To N&E bordered by L9530. To S, bounded by L9539. To W, bordered by L9235 & L9259 and by L9442

Matrix: Grey-brown soil, mixed with mud brick debris, ash, flecks of plaster, numerous sherds, shells.

Closing: End of Season - Not fully excavated, not closed. Mudbrick wall [W9295] should appear at the bottom of the pit

photos

- reason for opening
- definition / limits
- reason for closing
- relation to other elements
- working photos, nos:
- publication photos
- architects permission

written by R. Calman checked by J. Zorn

Relations: L9529 probably cuts mudbrick fill & rubble loci to W, L9235 & L9259. SW tip of L9529 probably was included in the material of L9422. To N, L9529 cuts L9530, and to E cuts L9551. To S, the relationship between L9529 & L9539 is unclear. The material collected from between these two pits was considered TWZ material. Pit L9529 appears to be later than pit L9539. Perhaps pit L9529 cuts L9539.

