

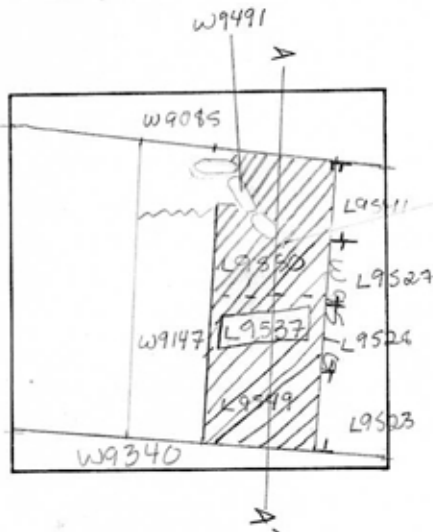
phase (in area):

LOCUS L19537TEL DOR 1989 field 6 square A.K.34

date opened <u>02/04/89</u>	level <u>1503</u>	date closed <u>04/08/89</u>	level <u>1492</u>	floor level	type of locus <u>STRATIFIED ACCUMULATION</u>
--------------------------------	----------------------	--------------------------------	----------------------	-------------	---

loci above <u>L9529</u> <u>L9523</u>	loci below <u>L9549</u> <u>L9550</u>	sealed by
---	---	-----------

graphic description



section

photos

- reason for opening
- definition / limits
- reason for closing
- relation to other elements
- working photos, nos:
- publication photos
- architects permission

written by W. SWANSONchecked by J. ZORN

final locus no.	arch. unit / logical area	stage (in sq.)	final STRATUM
-----------------	---------------------------	----------------	---------------

Summary:

Description:

REASON FOR OPENING: CAME DOWN ON LITOLATE MUD-BRICK MATERIAL MIXED WITH SOIL AND LARGE ROCKS UNDER L9547, L9527, L9528 AND L9523 - COLLAPSED INTO L9527.

MATRIX: DARK MUD BRICK MATERIAL MIXED WITH RICH DARK SOIL AND ROCKS, LITTLE POTTERY

DEFINITION/LIMITS: BOUNDED ON N BY PEDESTAL OF W9095, ON S. BY PEDESTAL OF W9340, ON E BY W9510 AND ON W BY PEDESTAL OF WALL W9147; PEDESTAL OF W9491

REASON FOR CLOSING: CAME DOWN ON LOOSER SOIL CONTAINING FEW ROCKS/STONES IN S. PORTION OF LOCUS, BECAME L9549; MANY STONES

IN MORE MUD BRICK MATERIAL IN N. PORTION, BECAME L9550.

RELATIONS: REACHES PEDESTALS OF W9095, W9340 AND W9491. COVERED BY L9527, L9528, L9547 & L9523. IS CONTINUATION OF MUD BRICK MATERIAL FROM L9547 & L9527. COVERS L9549 AND L9550 POSSIBLY DEBRIS FROM MUD-BRICK WALL. Probably cut by both W9147 and W9510

