

TEL DOR

1919

field

6

square

AK 3.4

phase (in area):

LOCUS

L9541

date opened

level

date closed

level

floor level

type of locus

02/03/89

1520

09/08/89

1497

MUD BRICK MATERIAL FALL

loci above

W9490

L9449

loci below

L9537

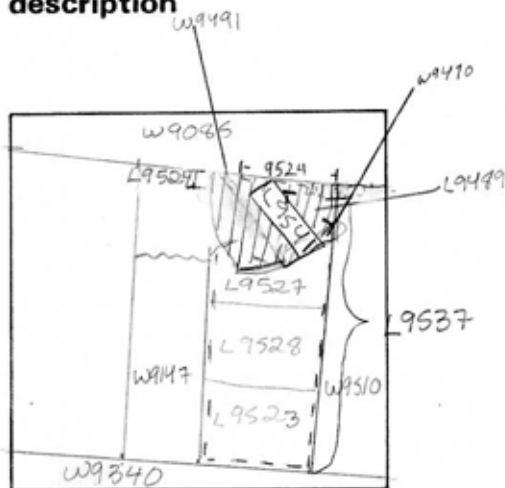
sealed by

L9326 W9490

L9524

W9491

graphic description



final locus no.

arch. unit / logical area

stage (in sq.)

final STRATUM

Summary:

Description:

REASON FOR OPENING: CAME DOWN ON MUD-BRICK MATERIAL UNDER MAURILE INSTALLATION (TW9524, TW9499, TW9490) COLLAPSED INTO L9541.

MATRIX: DARK CHOCOLATE MUD-BRICK MATERIAL MIXED WITH RICH DARK SOIL, SOME STONES. MUCH THE SAME AS L9527 TO S.

DEFINITION/LIMITS: T BOUNDED ON N BY TW9086 PEDESTAL, ON W BY PEDESTAL TW9491, ON E BY TW9510 ON S. BY L9527.

section

REASON FOR CLOSING: CAME DOWN ON SOIL CONTAINING MUD-BRICK MATERIAL AND ROCKS, UNDER L9523, L9527, L9524 AND L9541 COLLAPSED INTO L9537.

photos

- reason for opening
- definition / limits
- reason for closing
- relation to other elements
- working photos, nos:
- publication photos
- architects permission

written by W. SWANSONchecked by J Zorn

RELATIONS: L9541 IS COVERED BY N→S: L9524, L9499 & TW9490. L9541 IS THE SAME AS L9527, POSSIBLY MUD BRICK MATERIAL WASHED OFF TW9522. L9541 CUT BY TW9510. REACHES PEDESTAL OF WALL TW9491, PROBABLY CONTINUES BENEATH TW9491. RELATIONSHIP TO TW9086 UNDETERMINED - MORE EXCAVATION NEEDED (COVERS PART OF L9537 / MORE OF SAME MATERIAL.) OVER →

