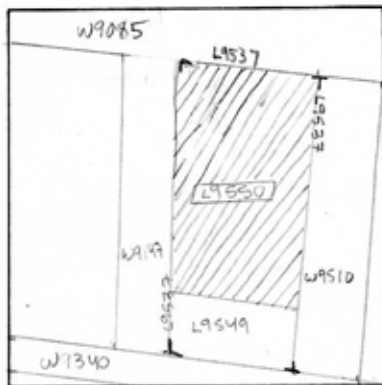


TEL DOR 1949 field 6 square AK.3.4 phase (in area): LOCUS L19550

date opened 04/08/49 level 1487 date closed 11/09/49 level 1464 floor level _____ type of locus FALLEN STONE AND BRICK

loci above L9537 loci below NONE YET sealed by _____

graphic description



final locus no. _____ arch. unit / logical area _____ stage (in sq.) _____ final STRATUM _____

Summary:

Description:

REASON FOR OPENING: CAME DOWN ON LOOSE SOIL IN S. PORTION OF [W9537] AND CONTINUED MUD BRICK MATERIAL CONTAINING MORE FALLEN STONE IN N. PORTION. SOUTH BECAME [L9549]; NORTH BECAME [L9550].

MATRIX: WASHED MUD BRICK MATERIAL (DARK (HOCOLATE) AND FALLEN STONES (2-8 FISTS). LITTLE POTTERY

DEFINITION/LIMITS: BOUNDED ON N. BY PEDESTAL OF [W9085] ON W. BY PEDESTALS OF [W9149] & [W9147], ON E. BY [W9510], ON S. BY [L9549]

section

REASON FOR CLOSING: END OF SEASON - not closed

photos

- reason for opening
- definition / limits
- reason for closing
- relation to other elements
- working photos, nos:
- publication photos
- architects permission

written by W. SWANKO

checked by J. ZORN

RELATIONS: COVERED BY [L9537]. PROBABLY FALL FROM SAME WALL. CUT BY [W9510]. SEEMS TO REACH [L9549] ROCKS BECOMMING A POSSIBLE WALL-CONTINUATION OF WALL [W9212]. MUD BRICK MATERIAL CONTAINING STONES SEEMS TO CONTINUE UNDER BOTH [W9147] & [W9510]. REACHES PEDESTAL OF [W9085] AND SEEMS TO CONTINUE BENEATH IT (SOMEWHAT FEWER STONES TOWARDS EXTREM N. END OF LOCUS).

