

TEL DOR 19 89 field G square AK32 phase (in area): 6 LOCUS W9557

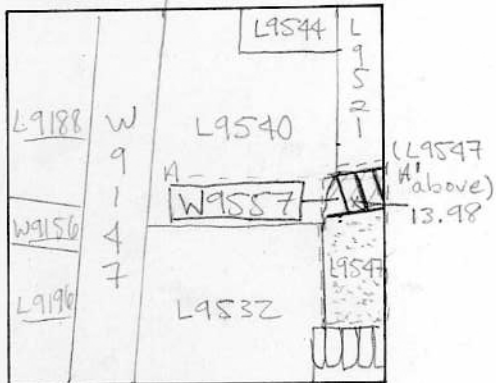
date opened 07/08/89 level 13.98 date closed 09/08/89 level 13.74 END OF SEASON floor level _____ type of locus WALL (MUDBRICK)

loci above 9547 loci below None yet cl = L9852 9892 sealed by _____

graphic description

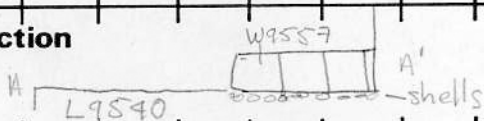


1:100



= floor surface

section



photos

- reason for opening
- definition / limits
- reason for closing
- relation to other elements
- working photos, nos:
- publication photos
- architects permission

written by Laura Millh

checked by J. Zorn

final locus no.	arch. unit / logical area	stage (in sq.)	final STRATUM

Summary:

Description: REASON FOR OPENING: CAME DOWN ON 4 MUDBRICKS IN LINE, below L9547

DEF./LIMITS: W9557 BORDERS THE EAST BAULK IN THE NORTH IT BORDERS L9521 IN THE SOUTH L9547 AND IN THE WEST L9540

MATRIX: ONE COURSE OF 4 BLACK/BROWN MUDBRICKS. (BRICK DIMENSIONS: .30m x .17m, WALL DIMENSIONS: .60m x .30m x .27m)

REASON FOR CLOSING: END OF SEASON - NOT CLOSED.

RELATIONS: W9557 IS DIRECTLY BELOW THE MUDBRICK DEBRIS OF L9547. LOCI BELOW NOT YET DETERMINED. L9521 OTHER MUDBRICK DEBRIS, REACHES W9557. W9557 IS CUT BY THE FILL OF L9540

THE KURKAR SURFACE IN L9547 REACHES W9557 AND MAY BE A FLOOR SURFACE FOR AN AREA BOUNDED BY W9557. W9557 IS VISIBLE IN THE EASTERN BAULK WHICH BORDERS SQUARE AJ32 AND MAY HAVE ONCE EXTENDED INTO THIS SQUARE. FURTHERMORE W9557 IS ABOVE A LAYER OF SHELLS THAT CAN BE SEEN AT THE LEVEL OF L9540 (13.74) AND IN THE EASTERN BAULK. W9557 MAY BE PART OF THE IRON AGE HOUSE. W9557 IS DISTURBED.

OVER →

