

Locus L 9609	Dor 1991	Fld G	Sq A.I.3.1	Loc. type NONSTRATIFIED WASH
Open Date 015/07/91	High at 1.5.22 N.W	Low at 1.4.9.7 S.W	Seals: _____	
Close Date 018/07/91	1.4.9.2 N.W	1.4.8.10 S.W	Sealed by: _____	
Floor: type 1.2	1.1	1.1	Loci 2.0/1.1	
Length 2.0	Width 1.0	Vol. _____	above _____	
Value d	Remove 018/07/91	Drawn? N/A	below _____	
Photo #(1) _____	Photo #(2) _____	Loci 9620	below _____	
Written by: D.P.W	Checked by: J.R.Z			

Unit	Phase	Stage	Stratum	PoM
------	-------	-------	---------	-----

Summary

Opened: To remove 5 years of non-stratified wash
THE WASH WAS FIRST LAYED DOWN SINCE 1986.

Limits (N) BOUNDED BY L9058 / L9053
 (S) BOUNDED BY SOUTH BALK
 (E) BOUNDED BY EAST BALK
 (W) BOUNDED BY W9047

Closed: Removed wash down to 1986 ^{level of} L9062, the cleaning locus 9609 was closed below the lowest limit of L9062

Matrix: Laminated layers of non-stratified wash. A stone socle was found near the south balk, this must be from locus 9621 excavated in 1986.
This is # 96107

Relations: The wash layer L9609 covers L9620, L9609 reaches L9047 and L9058 and L9053 (= W9058) as "post-excavational" action. These are, of course, meaningless relations

Additional Observations/Value: Because this is non-stratified wash it has no stratigraphic value

Locus Basket List

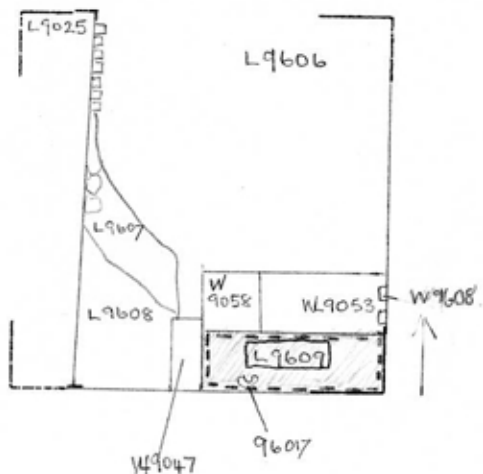
L 9609

Bask. No.	Sq.	Beg. Ele.	Clo. Ele.	St Df	Lc St	Ob	Ma	R	C	P1	P2	P3
96008	AI31	15.21	15.04	ns	sh	cr	0	n	pr	hl	rm	
Cleaning bucket.												
96017	AI31	15.11	15.11	ns	af	st		n				
Door sockle packed with 5/one, possibly in situ.												
96031	AI31	15.10	15.10	ns	cn	br		n				
Bronze coin.												
96069	AI31	15.22	15.22	ns	af	st		n				
This may go with basket #96017-possibly part of door sockle.												
96086	AI31	14.80	14.80	ns	ma	bn		n				
Small bone.												
96087	AI31	14.80	14.80	ns	sh	cr	0	n	ir	pr	rm	

Locus

L 9609

Sketch plan



--- = L9620 below L9609

Photo

Photo

Section

Section