

Locus L 9613	Dor 19 9.1	Fld 6	Sq A5, 3, 4	Loc. type PIT & ROBBER TRENCH (?)
Open 08/07/91	High 15.76	at SE	Low 15.75	at SW
Close 12/07/91	15.44	SE	15.41	SW
Floor: type				
Length 2.0	Width 2.3	Vol		
Value id	Remove 12/07/91	Drawn? N.O.		
Photo # (1)	Photo # (2)	Loci 9602		
Written by: KAL	Checked by: JRZ	above		
		below		

Unit	Phase	Stage	Stratum	PoM
-------------	--------------	--------------	----------------	------------

Summary

Opened: Opened after non-stratified wash L9602 cleared to excavate pit material at SW of AJ 34.

Limits (N) L9085 and L9615
(S) L9103
(E) L9614
(W) W. bank descending into AJ 34

Closed: Closed L9613 when L9613 level with adjacent 19647 and 19614. Noted similar sds in L9613 and SW portion of 19647 so they were collapsed to form new L9649.

Matrix: Similar to the SE pit, 19614 the soil in L9613 has a high concentration of pottery and shell shreds with small stones. L9613 is lighter in color and more loosely packed than the dark brown soil in L9614. The highest concentration of shells and shreds is in the western part of the locus at the edge of the bank with AJ 34.

Relations: Pit L9613 cuts pit 19614 at the east. Drain L9103 and the material below the drain, L9647, reach half across and probably cut the southern limit of L9613. *

L9613 was excavated in two sections - the west half and east half along a NS line drawn from the east point of W9650. The western portion of L9613 may be a robber trench that cut the pit and robbed-out W9650 except for the pedestal that remains against L9085. The soil in L9613's proposed robber trench was lighter gray than the eastern section's soil which looked more like 19614's dark brown, hard-packed pit material. The western portion of L9647 must be a continuation of L9613 because the material in each locus is identical. The eastern portion of L9647 is a continuation of pit 19614 and thus not associated with L9613 which is a separate pit. Pit L9613 extends into squares AJ 34, AJ 33 and AJ 33 cutting into material as pit L9251. Each square shows about a quarter of pit L9613.

* (INSERT) L9085 and W9650 cut pit L9613.
 * Although L9613 was excavated in two sections because of a proposed W9650 robber trench, further excavation has shown that L9613 is homogeneous pit material. W9650 is a (Roman) pedestal that cuts the pit L9613.

Additional Observations/Value: Unsealed pit L9613 may contaminate loci, 19614, 19647, 19615, around it.

Locus Basket List

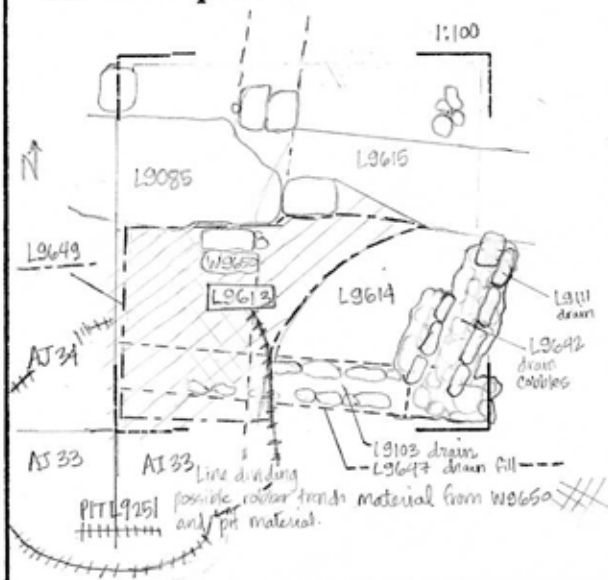
L 9613

Bask. No.	Sq.	Beg. Ele.	Clo. Ele.	St Df	Lc St	Ob	Ma	R	C	P1	P2	P3
96109	AI34	15.74	15.70	pt		sh	cr	2	d	pr	ir	hl
Samian handle kept.												
96146	AI34	15.70	15.52	pt		sh	cr	0	d	pr	ir	
96196	AI34	15.70	15.52	pt		sh	gl		d			
96210	AI34	15.52	15.50	pt		sh	cr	0	d	pr		
Sculptue kept for new number.												
96211	AI34	15.70	15.45	tz		sh	cr	0	?d	pr	ir	
- Kept a sculpture with new number.												
96216	AI34	15.70	15.47	tz		ma	bn		?d			
96231	AI34	15.52	15.50	pt		sh	gl		d			
96408	AI34	15.45	15.45	pt		sc	cr		d			
Ceramic sculpture from #96210 on 11/07/91. Levels for 15/07/91 are suspect; transit knocked out of alignment.												
96409	AI34	15.70	15.45	pt		sc	cr		d			
Ceramic sculpture from #96211 pottery on 11/07/91												

LOCUS

L 9613

Sketch plan



Photo

Photo

Section

Section