

Locus L 9619	Dor 199.1	Fld G	Sq AI,3,3	Loc. type Fill below drain Pit?
Open Date 0.7.79.1	High at 15.4.5	N	Low at .	Seals: L9111
Close Date 9.7.89.1	15.1.5	Center	.	Sealed by:
Floor: type L.9	Width 0.5		Vol	Loci L9111
Value u	Remove 7.0.89.1		Drawn? No	above
Photo #(1)	Photo #(2)			Loci L9639
Written by: R.S.S	Checked by: J.R.Z			below

Unit	Phase	Stage	Stratum	PoM
------	-------	-------	---------	-----

Summary

Opened: To excavate unsealed area below drain L9111 where drain floor and West wall have eroded away since 1989 season.

Limits (N) Bounded by L9631 and L9648

(S) Bounded by L9111/L9025 (the drain interchange)

(E) Bounded by L9111 and W9051

(W) Bounded by L9107

Closed: Reached layer of hardened mud-brick-like material changed to L9639.

Matrix: Medium grey soil. High shell content with very few cobbles. Very high sherd and bone content. Lighter color than brown matrix in L9107. Similar color to L9631, though more shell and dominated by Roman pottery, unlike pure Iron Age in L9631.

Relations: L9619 is covered by L9025 to the south, and is also covered by L9111 to the east. It appears to be stratified fill supporting the base of drain L9111. It is probably a fill which cuts or covers L9639. Whether it cuts or is cut by L9107 is uncertain. W9051, probably a Persian period pier and rubble wall, seems to have been used opportunistically as the base of L9111 along its SE course, therefore L9619 reaches L9051. L9619 also covers L9639. Almost all pottery recovered was Roman period, unlike L9639 and L9631 which are pure Iron Age assemblages.

APZ

Additional Observations/Value: Strong Roman period deposit below drain L9111 helps secure period assignment for the drain

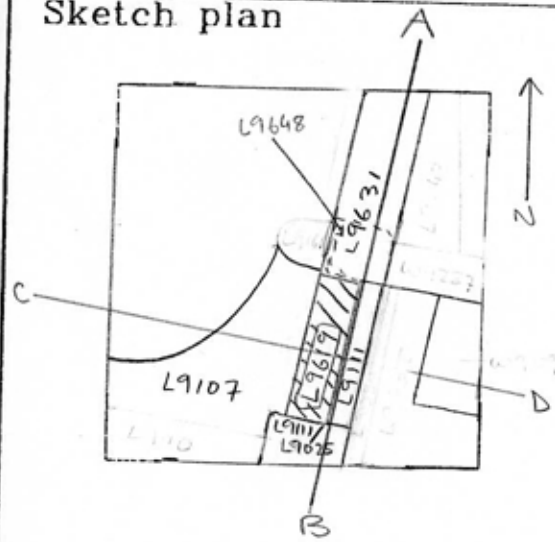
Locus Basket List

L 9619

Bask. No.	Sq.	Beg. Ele.	Clo. Ele.	St Df	Lc St	Ob	Ma	R	C	Pi	P2	P3
96075	AI33	15.45	15.15	pt	sh	gl			u			
Glass.												
96076	AI33	15.45	15.40	pt	cn	br			u			
Bronze coin.												
96077	AI33	15.45	15.15	pt	sh	cr	i		u	rm		
Pottery, 2 LMP fragments.												
96078	AI33	15.45	15.15	pt	ma	bn			u			
Bones.												
96083	AI33	15.45	15.15	pt	ot	ir			u			
Iron slag fragments.												
96105	AI33	15.15	14.91	pt	sh	cr	i		u	ir	pr	rm
Pottery above mud brick. IPR kept.												

Locus
L 9619

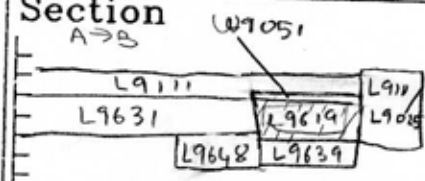
Sketch plan



Photo

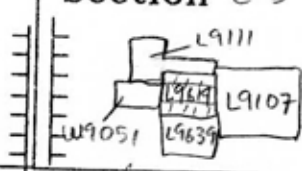
Photo

Section A-B



facing E

Section C-D



facing S.