

Locus W 9626	Dor 19 9.1	Fld G.	Sq AI32	Loc. type Stone socle of mudbrick wall
Open	Date 09.07.91	High at 1.4.48 E.	Low at 1.4.30 W.	Seals: W9704
Close	08/08/91	1.3.98 E.	1.3.94 W.	Sealed by:
Floor: type				Loci L9600
Length 3.4	Width 1.0	Vol	Drawn? Y, 95	above
Value	Remove			Loci W9704
Photo #(1) #70561	Photo #(2) #70562			below
Written by: RAT	Checked by: JRZ			

Unit	Phase	Stage	Stratum	PoM
------	-------	-------	---------	-----

Summary

Opened: Reached 1989 season elevations, & came down onto six distinctly different areas of material; opened [L9622], [L9623], [L9624], [L9625], [W9626], & [L9640]

Limits (N) Bordered by [L9640]

(S) Bordered by [L9625] & [L9622]

(E) Bounded by E bank of AI32

(W) Bordered by [L9691]

Closed: End of Season - Not Closed

Matrix: On Sand N face, there are two courses of stones, with an occasional third, with stones ranging in size from ca. 35-45 cm x 20-25 cm, intermingled with stones double-fist to head size on top there are fist-sized "rubble" stones; stones are all packed together with mudbrick material. Photo # (3) 70563; # (4) 70564; # (5) 70565

Relations: [L9600] covers, but does not seal, [W9626]. [W9626] covers and seals ^{E part of} [W9704]. [W9626] is built on top of [W9704], i.e., makes secondary use of, [W9704]. To the N, [W9626] is reached by the fill of [L9640] and by the part of [F9690] that underlies [L9640]. **To the S, floor [F9623] which underlies [L9625] and [L9622], reaches [W9626], as does the fill of [L9625] which may be the debris from the collapse of a mudbrick wall originally built atop the stone socle [W9626]. Pit [L9622] cuts [F9623], but the material of [L9622] reaches [W9626]. The material above [L9622] ([L9207] from the 1987 season) covers and reaches [W9626] at its E end. * Also to the S, [W9626] floats above [F9661]; the relation between the fill of [L9661] to [W9626] is uncertain, but [W9626] may cut [L9661]. To the E, [W9626] reaches the E bank of AI32. To the W, the relation between [L9691] & [W9626] is uncertain since [L9691] is a cleaning locus; but [L9691] may reach [W9626], since the former may be debris actually collapsed from a mudbrick wall atop [W9626].

* Pit [L9677] below [L9622] also reaches [W9626]

** Also to the N, the fill of [L9712] reaches [W9626], while [W9626] probably floats above [F9712]. [L9713] reaches [W9626]. The stone socle below [L9713], i.e. [W9728],

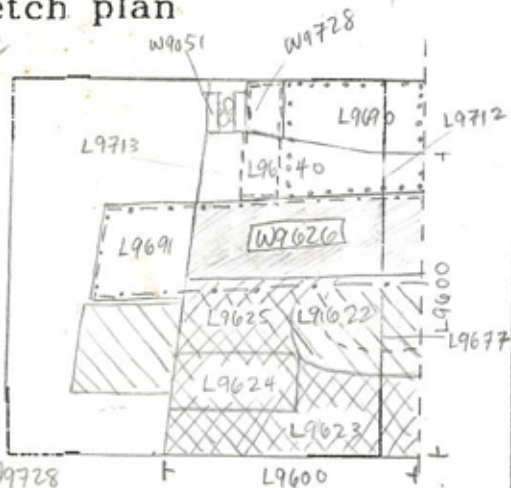
Additional Observations/Value: appears to abut W9626 forming a corner at its W. end.

Locus

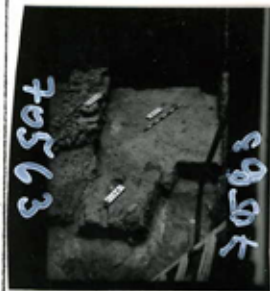
W 96.2.6

Sketch plan

AI32



Section



Section



Locus W 9626	Dor 19 ₉₄	Fld <u>6</u>	Sq A132	Loc. type Stone Sockle of Mudbrick Wall.
Open	Date <u>04/07/94</u>	High at <u>14.55</u> <u>1E</u>	Low at <u>14.03</u> <u>1W</u>	Seals: <u>9704</u>
Close	<u>05/07/94</u>	<u>14.10</u> <u>1E</u>	<u>13.96</u> <u>1W</u>	Sealed by:
Floor: type				Loci
Length <u>3.4</u>	Width <u>1.0</u>	Vol		above
Value <u>5</u>	Remove <u>05/07/94</u>	Drawn? <u>YES</u>		below
Photo #(1) <u>see previous SEASONS</u>	Photo #(2)			Loci <u>9704</u>
Written by: <u>CAB</u>	Checked by: <u>JRZ</u>			

Unit	Phase	Stage	Stratum	PoM
------	-------	-------	---------	-----

Summary

Opened: beginning of season - continuation of removal.

Limits (N) SEE PREVIOUS SEASONS CARDS. RELATES TO MBRICK PHASE OF [W9728]

(S) SEE PREVIOUS SEASONS CARDS

(E) "

(W) "

Closed: When removed. [W9704] was opened for excavation directly underneath.

Matrix: see previous seasons cards. Towards the lower courses of [T09626] its matrix was crushable grey dirt mortar to the top of mudbrick wall [W9704].

Relations: COVERS AND SEALS East portion of [W9704].

Relation to [W9728] to North has ERODED, but note that [W9728] stone socle phase abuts [W9704] mbr wall, therefore, presumably, [W9728] mudbrick phase (Above ^{the} stone socle phase), abuts the stone wall [W9626]. (see section).

Additional Observations/Value: medium value due to erosion, to high value for sealing [W9704] below.

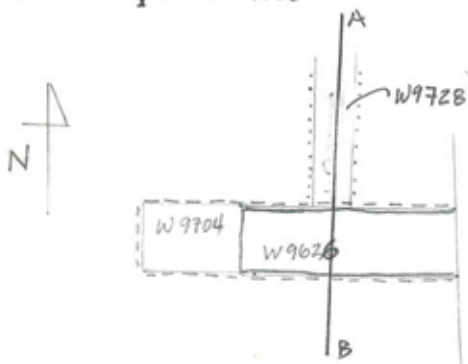


117389

Locus

L 9626

Sketch plan 1:100



▭ : W9626

▨ : W9704

▤ : W9728

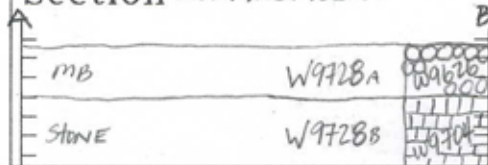


117036



112466

Section From West to East



Section

