

Locus <u>L 96302</u>	Dor <u>1991</u>	Fld <u>10</u>	Sq <u>AH33</u>	Loc. type <u>FLOOR MAKEUP AND FILL BELOW</u>
Open	Date <u>09/07/91</u>	High at <u>14.83</u>	Low at <u>14.77</u>	Seals: <u> </u> <u> </u> <u> </u> <u> </u>
Close	<u>02/08/91</u>	<u>14.66</u>	<u>14.73</u>	Sealed by: <u> </u> <u> </u> <u> </u> <u> </u>
Floor: type	<u>1</u>	<u>1</u>	<u>1</u>	Loci <u> </u> <u>L9630</u> <u>L9706</u> <u>L9711</u>
Length	<u>2.9</u>	Width <u>2.3</u>	Vol <u> </u>	above <u>L9711</u> <u>L9611</u> <u> </u> <u> </u>
Value	<u>11</u>	Remove <u>02/08/91</u>	Drawn? <u>No</u>	Loci <u>L9657</u> <u>L9658</u> <u> </u> <u> </u>
Photo #(1)		Photo #(2)		below <u> </u> <u> </u> <u> </u> <u> </u>
Written by: <u>CLB</u>	Checked by: <u>JRZ</u>			

Unit	Phase	Stage	Stratum	PoM
------	-------	-------	---------	-----

Summary

Opened: OPENED TO REMOVE FLOOR [9305] AND FILL BELOW
~~CORRECTION [9605]~~ using 9305

Limits (N) BOUND BY BALK - AH34. SEE AH34 LOCUS CARD Limit = W9282
 (S) BOUND BY [W9096]
 (E) BOUND BY BALK
 (W) BOUND BY [W9260]

Closed: CAME DOWN ON TABUN - [19658] ALONG W WALL [W9260]. CLOSED AND MADE TECHNICAL DIVISION - [19657] AND [19658]

Matrix: DK BROWN LOAM, MODERATELY COMPACTED WITH SOME CHARCOAL, ASH AND CLAY AND A TREMENDOUS AMOUNT OF POTTERY. [19657] IS AT THE SAME LEVEL AS [19334], [19693], [19619] AND [19711]. IN AH33 SEEBUT OF DIFFERENT MATRIX/MAKEUP - HARD COMPACT CLAY. Floor makeup of [9305] was ashy gray material, hand-packed, but not clearly traceable over the entire locus

Relations: [19630] IS COVERED BUT NOT SEALED BY FLOOR [9305] - PARTIAL FRAGMENTATION FLOOR. [19630] REACHES [W9260] TO THE WEST; IS CUT BY W9282 IN AH34 TO THE NORTH - SEE CARD; REACHES BALK TO THE EAST AND IS PARTIALLY CUT BY [W9096] IN THE SOUTH. [19630] IS TECHNICALLY SAME DEPOSIT AS [19657] BELOW AND ALL POTTERY FOR BOTH SHOULD GO TO RESTORATION TOGETHER. 9630 covers, but does not seal, 9657, 9305/L9605 covers 9630, but floor too fragmentary to say that it seals 9630.

Additional Observations/Value: ALL POTTERY TO RESTORATION WITH [19630] IN AH34 AND [19657] IN BOTH AH33 AND AH34. - VERY IMPORTANT - SEE [19630] CARD FOR AH34.

Locus Basket List

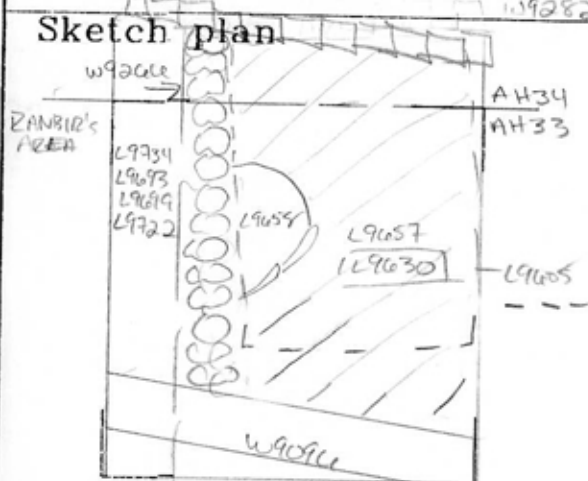
L 9630

Bask. No.	Sq.	Beg. Ele.	Clo. Ele.	St Df	Lc St	Ob	Ma	R	C	P1	P2	P3
96138	AH33	14.83	14.83	fm	sh	cr	2	u	iri	pr		
Very late Iron I, some BIC, some Irs, very few Persian pieces.												
96139	AH33	14.83	14.83	fm	sh	bn		u				
96140	AH33	14.83	14.83	fm	ma	sl		u				
Murex shell.												
96149	AH33	14.83	14.73	sa	sh	cr	2	u	iri	ir2a		
BIC.												
96150	AH33	14.83	14.73	sa	ma	bn		u				
96164	AH33	14.83	14.73	sa	sh	cr	3	u	iri	ir2a		
BIC, IRS, CYA. One ir2c intrusion.												
96171	AH33	14.83	14.73	sa	sh	cr	3	u	ir	ir2a		
BIC, lir2c?												
96176	AH33	14.83	14.73	sa	sh	cr	3	u	iri			
IRS, BIC.												

LOCUS

L 9630

Sketch plan



Photo

Photo

Section

Section

↑ N 1:50 SCALE

Locus 9630	Dor 19 9.1	Fld G.	Sq AH33 AH34	Loc. type FLOOR MAKEUP AND FILL BELOW
Open	Date 22/07/91	High at 1.49.2	Low at 1.4.8.9 W	Seals: _____
Close	23/07/91	1.4.6.3	1.4.6.6 W	Sealed by: _____
Floor: type				Loci ⁹³¹ [L9630] _____
Length 2.8	Width 0.7	Vol _____		above _____
Value	Remove 23/07/91	Drawn? No		below _____
Photo #(1)		Photo #(2)		Loci L9657 _____
Written by: CLB		Checked by: JIRZ		below _____

Unit	Phase	Stage	Stratum	PoM
------	-------	-------	---------	-----

Summary

Opened: OPENED TO REMOVE FLOOR [L9305] and FILL BELOW TO COINCIDE WITH LOCUS [L9630] IN AH33 TO SOUTH AS AN EXPANDED LOCUS FROM AH33.

Limits (N) BOUNDED BY [W9282]
 (S) BOUNDED BY AH33
 (E) BOUNDED BY BALK
 (W) BOUNDED BY [W9206]

Closed: 9630 was closed at same level as 9630 was closed in AH33. This level coincides with the top level of L9658, the tabun, in AH33

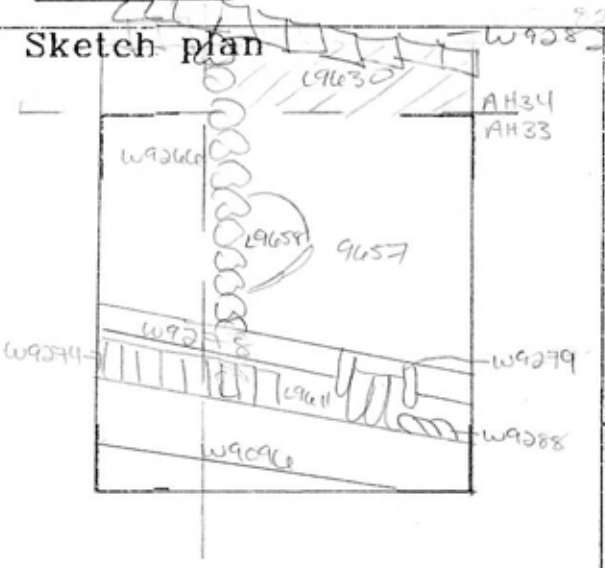
Matrix: DARK BROWN MODERATELY COMPACTED LOAM - SOMEWHAT CLAYEY & SOME ASH & POTTERY SHEDS. MATRIX CONSISTENT WITH [L9657] BELOW

Relations: TZ AREA CREATED IN ORDER NOT TO CONTAMINATE 9630 WITH POSSIBLE FOUNDATION TRENCH NEAR CUR; SILLAR FOUND IN NW CORNER AREA - CONSISTANT WITH [L9657] NW AREA OF AH33. [L9630] IS CUT BY [W9282] - ROMAN WALL TO THE NORTH. [L9630] REACHES [W9206] - IKONAGE WALL TO THE WEST. [L9630] COVERS BUT DOES NOT SEEM [L9657] IN AH34 AND AH33. POSSIBLY CONTINUES INTO AQ34 TO THE EAST. (SEE LOCUS CARD FOR AH33. 9630 material may well continue below W9282 on the N. As mentioned in Closed and Matrix above, 9630 and 9657 are continuous deposits. Pottery from both loci may be restorable between each other.

Additional Observations/Value: ALL POTTERY TO RESTORATION & [L9657] IN AH33; AH34 [L9630] IN AH33 - VER. IMPORTANT TO SEE [L9630] CARD FOR AH33

LOCUS
L 9630

Sketch plan



Photo

Photo

Section

Section

↑ N 1:50 SCALE