

Locus L9631	Dor 1991	Fld G ₁	Sq A.I.33	Loc. type Fill below drain		
Open	Date 7/10/91	High 15.69	at N	Low 15.39	at S ₁	Seals: _____
Close	Date 7/15/91	High 15.40	at N	Low 15.17	at S ₁	Sealed by: L9111
Floor:	type	Length 2.5	Width 0.6	Vol	Drawn? NO	Loci L9111
Value S ₁	Remove 7/15/91					above _____
Photo #(1)		Photo #(2)				Loci L9648 L9667
Written by: R.S.S.		Checked by: J.R.I.Z.				below _____

Unit	Phase	Stage	Stratum	PoM
Summary				

Opened: To investigate the sealed fill below the floor of drain L9111

Limits (N) Balk with A134
 (S) Bounded by L9619
 (E) Bounded by L9297, L9643 and W9278/W9051 corner.
 (W) Bounded by L9123, L9149 and L9161

Closed: Reached layer of cobbles which covered virtually all of locus. Split into two loci L9648 (mudbrick) and L9667 (cobbles)
 Matrix: Hard medium gray soil. Similar to L9619 and L9643. Lighter than L9123, L9149 and L9161. Concentrations of tabern fragments. High Iron Age pottery, bones and shell content. Mud brick near bottom in S. section.

Relations: A sealed Iron Age deposit probably cut by drain floor L9111, which covers all L9631. It is probably cut by L9123 (L9123 has Hellenistic, Persian + IA pottery fill). L9149 and L9161 reach L9631, though the relationship is obscure as the former loci (L9149 + L9161) were dug in 1987. However, they probably cut L9631 since period assignments are later (if L9631 is a pure IA deposit or appears likely). L9631 is cut by L9619. There is a S. wall of L9631. The pottery from L9619 is definitely of a later period, though the matrix is similar. The base of L9631 is covered by cobbles (L9667) which are probably wall collapse from an IA wall. These cobbles may be a continuation of L9643 or fall from a wall in L9643 or L9298. L9631 is cut by the corner where L9278 and L9051 dovetail into each other. The area not covered by cobbles covers L9648. L9631 covers L9667 and L9648

Additional Observations/Value: Highly valuable. Sealed IA locus beneath drain L9111.

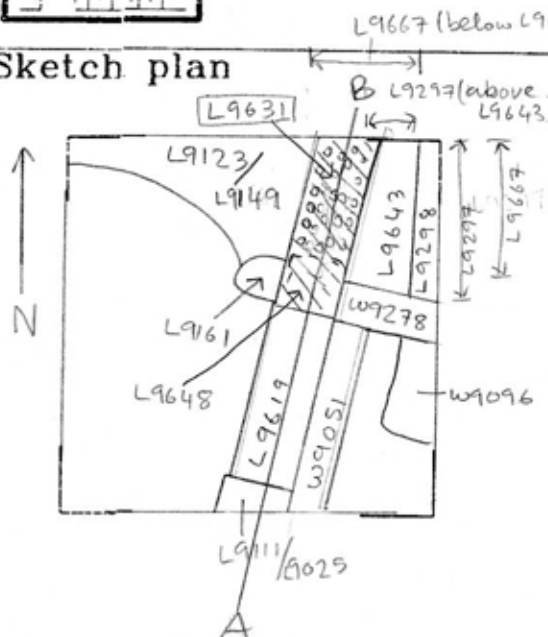
 Locus Basket List

L 9631

Bask. No.	Sq.	Beg. Ele.	Clo. Ele.	St Df	Lc St	Ob	Ma	R	C	Pi	P2	P3
98165	AI33	15.89	14.89	pt	sh	cr	2	s	ir2		ir2c	
98170	AI33	15.89	14.89	pt	ma	bn		s				
98172	AI33	15.89	14.89	pt	ot	cr	0	s				
Tabun fragments?												
98178	AI33	15.58	15.58	pt	tw	st		s				
Grindstone.												
98188	AI33	14.89	14.89	pt	ot	st		s				
Flint debitage.												
98191	AI33	15.37	15.37	pt	sh	cr	2	s	ir			
Cup and saucer.												
98193	AI33	15.39	15.39	pt	sh	cr	2	s	ir			
Iron age painted pottery. IDP.												
98197	AI33	15.89	14.89	pt	sh	cr	2	s	ir2b/c			

LOCUS
 L 9631

Sketch plan

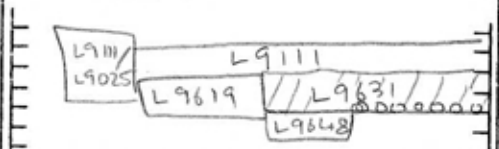


Photo

Photo

Section A-B

Section



Facing West