

Locus L9637	Dor 1991	Fld G1	Sq A133	Loc. type CLEANING LOCUS
Open	Date 10/27/11	High at 1.5' 14" W	Low at 1.5' 14" W	Seals: _____
Close	19/07/11	1.5' 016" W	1.5' 06" W	Sealed by: _____
Floor: type	1	1	1	Loci above
Length	1.5	Width 4.5	Vol _____	Loci below
Value	10	Remove 19/07/11	Drawn? NO	
Photo #(1)		Photo #(2)		
Written by: CLR/PSS		Checked by: JRZ		

Unit	Phase	Stage	Stratum	PoM
------	-------	-------	---------	-----

Summary

Opened: OPENED TO DEFINE L9637 WHICH COULD BE A POSSIBLE WALL. L9245 WAS THE LOCUS NUMBER IN '88 SEASON for area of L9637.

Limits (N) BOUNDED BY BALK IN A134

(S) BOUNDED BY W9278

(E) BOUNDED BY W9266

(W) BOUNDED BY L9674 AND W9702

Closed: CAME DOWN ON MUD BRICK DEBRIS. L9637 and L9674 were collapsed to form L9687.

Matrix: LIGHT BROWN SANDY LOAM DEBRIS MIX WITH POTTERY AND BONE

Relations: L9637 covers E. part of L9687. L9637 reaches W9266. L9637 reaches W9702. L9637 reaches W9278. L9637 reaches balk with A134. MAJORITY OF THIS LOCUS WAS EROSIONAL WASH. OPENED L9687 WHEN CAME DOWN ON MUD BRICK DEBRIS L9637 reaches L9674 to the W. Both loci were collapsed into L9687 when L9637 came down on the same mud-brick debris as is L9674.

Additional Observations/Value: CLEANING LOCUS - NOT IMPORTANT.

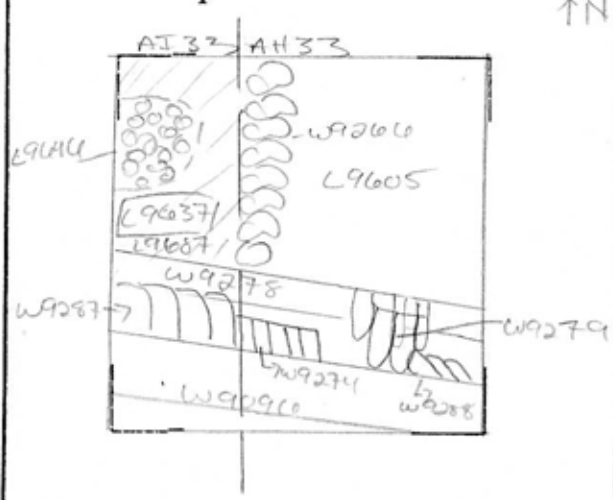
Locus Basket List

L 9637

Bask. No.	Sq.	Beg. Ele.	Clo. Ele.	St Df	Lc St	Ob	Ma	R	C	P1	P2	P3
96207	AH33	15.14	15.08	ci		sh cr	3	d		iri	ir2a	
96208	AH33	15.14	15.08	ci		ma bn		d				
96257	AH33 CYA.	15.17	15.17	ci		sh cr	2	d		ir		
96259	AH33	15.17	15.17	ci		ma bn		d				
96273	AH33 - Area 2:	15.08	14.53	ci		sh cr	2	d		ir2		
96274	AH33 Area 3:	15.08	14.53	ci		sh cr		d				
96287	AH33 From area 2:	15.08	14.53	ci		ma bn		d				

LOCUS
L 9637

Sketch plan



Photo

Photo

Section

Section

↑N 1:50 SCALE