

Locus 49648	Dor 199.1	Fld G ₁	Sq A.I.33	Loc. type Mod brick debris.
Open	Date 12/97/91	High at 1.5-1.7	Low at	Seals: _____
Close	12/07/91	14.91		Sealed by: 496111
Floor: type				Loci 49631
Length 0.8	Width 0.5	Vol		above
Value S	Remove 12/97/91	Drawn? NA		below
Photo #(1)		Photo #(2)		
Written by: R.S.S		Checked by: J.P.Z		

Unit	Phase	Stage	Stratum	PoM
------	-------	-------	---------	-----

Summary

Opened: To investigate area not covered by cobbles in 49631.

Limits (N) Bounded by 49667 and fill below.

(S) Bounded by 49639

(E) Bounded by fill below 49643 and where W9051/W9278 dovetail

(W) Bounded by 49149, 49161 (a later fill below 49171)

Closed: when reached same mod-brick debris level as was 49639 to S.

Matrix: Hard compact mod brick debris, several med. sized cobbles. Very similar to 49639. Darker brown than 49631, 49149 and 49171. Large quantities of pottery, (all IA).

Relations: 49631 covers 49648. 49648 reaches fill below 49643. 49171 and 49149 probably cut 49648 (both have later period pottery). 49639 is probably an unsealed continuation of 49648 (they have similar matrix and pottery). 49648 is ^{corner}cut by where W9051 and W9278 dovetail. 49649 is probably cut by 49161 (a later fill below 49095) 49161 (a later fill).

Additional Observations/Value: A sealed IA deposit below the drain 49111

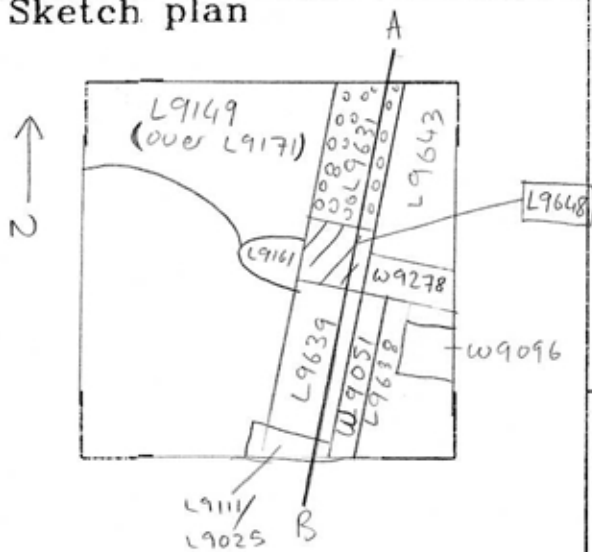
Locus Basket List

L 9648

Bask. No.	Sq.	Beg. Ele.	Clo. Ele.	St Df	Lc St	Ob	Ma	R	C	Pi	P2	P3
96290	AI33	15.17	14.91	fb	sh	cr	2	s	iri			
	Comments: PHL sherd.											
96291	AI33	15.17	14.91	fb	sh	cr	2	s	ir2	pr		
	Comments: pr piece in situ?											
96292	AI33	15.17	14.91	fb	ma	bn		s				

Locus
9648

Sketch plan

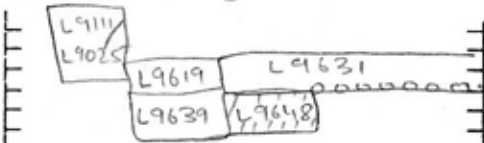


Photo

Photo

Section A - B

Section



facing west