

Locus WJ 9650	Dor 19 9.1	Fld 6	Sq A.I. 3.4	Loc. type Wall section & fill
Open Date 1.0/0.7/9.1	High at 1.6 1.9 S.W	Low at 1.5 8.7 S.W	Seals: _____	
Close 0.8/0.8/9.1	_____	_____	Sealed by: _____	
Floor: type _____	_____	_____	Loci above _____	
Length 0.9	Width 0.7	Vol _____	Loci below _____	
Value is	Remove _____	Drawn? Y.F.S		
Photo #(1) 70411	Photo #(2) 70412			
Written by: K.A.K	Checked by: J.R.Z			

Unit _____	Phase _____	Stage _____	Stratum _____	PoM _____
Summary				

Opened: Removed paving stone [L9632] to expose double ashlar layer beneath which begins [L9650].

Limits (N) W9085
 (S) L9198 L9613, L9649, L9680
 (E) L9198 L9613, L9649, L9680
 (W) W. balk descending into AJ34
 Closed: End of season. Not closed

Matrix: Two courses of two parallel ashlars measuring .70m x .25m each with small fieldstones lodged between ashlars. Made of limestone and worked into rectangular shape. The ashlars are

The two courses of ashlars rest on a base of large and small stones. Different composition than W9085

Relations: Above W9650 was the paving stone L9632 which completely sealed W9650. The base of W9650, a mixture of head-sized stones to field stones cuts into pit L9680. Pit L9613 (which became L9649) reaches and may have cut W9650 at the east, south and west. At the north, W9650 reaches W9085 and W9650 may be a statue pediment associated with W9085's structure. L9198 ^{or was cut by} reached W9650 at the east, south and west.

L9680 is possibly a continuation of pit L9613 + L9649. If so, W9650 cuts L9613 + L9649, not the reverse as stated above. (JRZ)

S. BEVERLY, 1992 - ARCHITECTURAL FRAGMENT (97515) FOUND AMONG FALLEN SMALL KURKAR ASHLARS BELOW THIS LOCUS. PROBABLY REUSED IN FOUNDATION PACKING OF THIS LOCUS. SEE PHOTOS.

Additional Observations/Value: W9650 may be a statue pediment. Sealed by L9632, but other pottery could easily contaminate

Locus Basket List

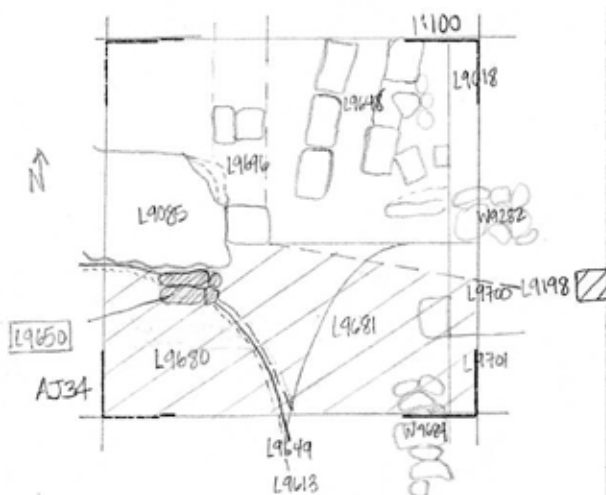
W 9650

Bask. No.	Sq.	Beg. Ele.	Cl. Ele.	St. Df.	Lc. Ob	Ma	R	C	P1	P2	P3
96570	AI34	15.15	15.15	ci		jw br			?d		
Bronze ring.											
97018	AI34	14.86	14.86	ci		ma br			d		
Bronze fragments.											
97018	AI34	14.90	14.86	ci		sh cr	0	d	iržc	pr	
97057	AI34			tz		sh cr	i	?d	pr		
ATC.											
97080	AI34	14.37	14.18	tz		sh cr	ž	?d	pr		
i rm; i ESR.											

Locus

L 9650

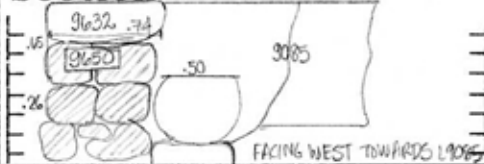
Sketch plan



Photo

Photo

Section 1:50



Section

FACING WEST TOWARDS L9685

Locus W 9650	Dor 19 92	Fld 5	Sq AI 34	Loc. type WALL OR PIER (CONTINUAT
Open 13/27/92	High at 16.19	Low at 15.87	Seals:	_____
Close 23/27/92	at S.W	at N.E	Sealed by:	_____
Floor: type	_____	_____	Locl	_____
Length _____	Width _____	Vol _____	above	_____
Value _____	Remove _____	Drawn? NO	below	_____
Photo #(1) 87125	Photo #(2) 87183 95688	Locl	_____	_____
Written by: S.F.B	Checked by: J.P.Z	below	_____	_____

Unit	Phase	Stage	Stratum	PoM
------	-------	-------	---------	-----

Summary

Opened: W9650 OPENED IN 1992 WHEN WE CONTINUED DOWN ON THE EAST SIDE OF THE LOWER PART OF ITS FOUNDATION

Limits (N) W9085 & UNEXCAVATED MATERIAL BENEATH IT.

- (S) PREVIOUSLY EXCAVATED
- (E) L9754, L9780
- (W) PREVIOUSLY EXCAVATED

Closed: CLOSED W9650 IN 1992 SEASON WHEN L9780 REACHED THE BOTTOM OF ITS FOUNDATION ON ITS EAST SIDE Not Removed.

Matrix: UPPER PORTION OF THIS FEATURE IS KURKAR ASHLARS. (SEE CARD FOR 1991.) ASLARS ACTUALLY CONTINUE DOWN TO A THIRD & POSSIBLY 4TH COURSE. THESE COURSES ARE OBSCURED BY FIELD STONES APPARENTLY USED AS FOUNDATION PACKING FOR THIS PIER (*)

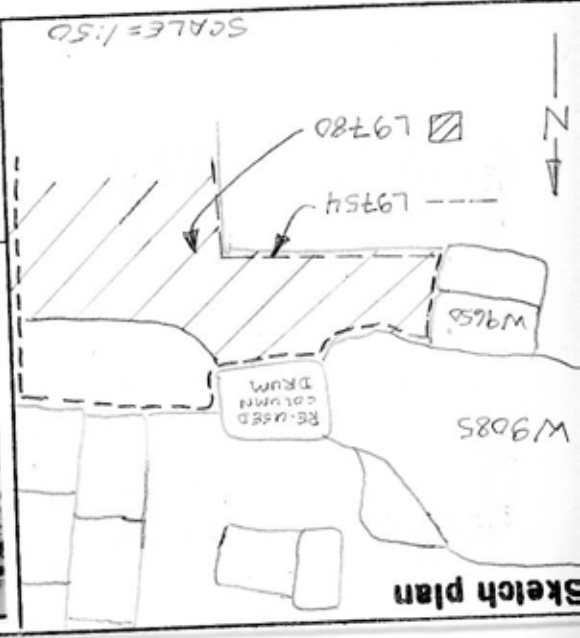
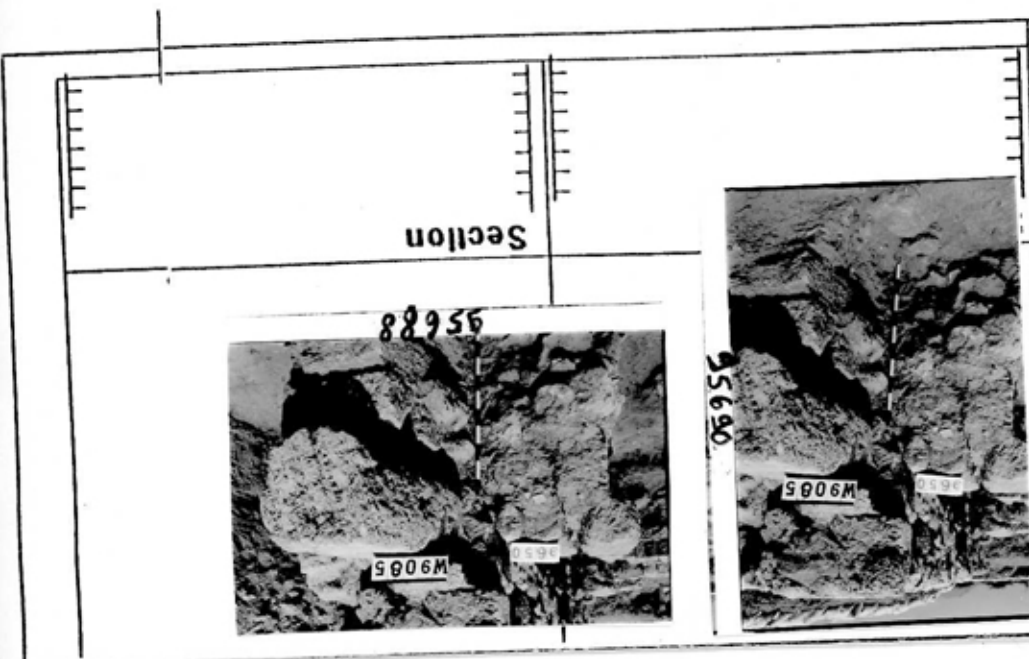
Relations: 1992 SEASON EXPOSED ONLY RELATIONS ON THE EAST OF LOWER PART OF FOUNDATION. W9650 CUTS L9754 AND UPPER PART OF L9780.

COMMENT ON RELATIONS TO W9085: W9650 IS OF ENTIRELY DIFFERENT CONSTRUCTION THAN W9085. W9650 IS SIGNIFICANTLY DEEPER THAN EVEN THE DEEPEST PART OF THE LOWER "B" PHASE OF W9085. I BELIEVE IT IS EARLIER THAN W9085. W9085 PROBABLY CUTS THE UPPER PART OF OF THE NORTH PART OF W9650. ITS CONSTRUCTION INDICATES POSSIBLE RELATION WITH ASHLARS BENEATH RE-USED COLUMN DRUM AT EAST END OF W9085 (Possibly Lower "B" Phase of 9085?)

(*) EXCAVATION THIS SEASON REVEALED MORE FIELD STONES AT BOTTOM OF FOUNDATION (OR PACKING)

NOTE: OPENING ELEVATIONS ON CARD FOR W9650 OF 1991 GIVE BOTH HIGH & LOW AT S.W. I HAVE CHANGED LOW TO N.E. THIS NEEDS CHECKING

Additional Observations/Value: PERHAPS PART OF HELLENISTIC / EARLY ROMAN INSTALLATION PRECEDING THAT REPRESENTED BY W9085.



Locus W 9650	Dor 19 93	Fld G ₁	Sq 4,1,3,4	Loc. type CARD 3 of 3 Wall -
Open 0.207/93	High 1.619	at S.W	Low 1.587	at E ₁
Close 0.507/93	High 1.470	at E ₁	Low 1.461	at W ₁
Floor: type Length 0.8	Width 0.3	Vol	Drawn? YES	Seals: _____
Value Remove 05/07/93	Remove	Drawn?	Drawn?	Sealed by: _____
Photo #(1) 100690	Photo #(2) 100691	Locl above	Locl below	Locl above
Written by: RSS	Checked by:	Locl above	Locl below	Locl above

Unit	Phase	Stage	Stratum	PoM
------	-------	-------	---------	-----

Summary

Opened: [W9650] opened in 1993 season to remove because Si ashlar pier threatened imminent collapse

Limits (N) Previously excavated
 (S) Previously excavated
 (E) Previously excavated
 (W) Previously excavated

Closed: [W9650] was closed when removed.

Matrix: Eight large ashlar blocks forming two piers next to one another each with four blocks. One block is a reused four-sided. The two piers were surrounded by packed in fist-sized stones and grey matrix. On the inside surfaces and at the base of the lowest course, the stones were covered in lime plaster.

Relations: For all previous relations see 1991 and 1992 cards.

The pottery recovered from wall make up was all Persian period or earlier. This supports the idea that the [W9650] was cut by [W9085] to the N. [W9650] may have contained both N. and S. To the S its extension would have been cut by pit [L9680]. To the N it would have been cut by [W9085].

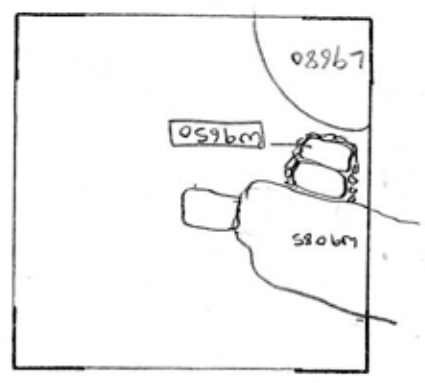
This wall was therefore probably a parallel wall to Pira's wall [W9147] and Woody's wall [W9510] both to the W. The base of [W9650] is approximately at the same level as the bases to these two walls.

[W9650] will seal the as yet unnumbered locus below

NOTE: On the photos 100690 to 100695 [W9650] was mistakenly numbered as [W9632]. [W9632] was the later phase superstructure to [W9650].

Additional Observations/Value: Surviving pier of Persian period wall; high value; additional photos 100692 to 100695.

Sketch plan 1:100
109650



2 →



Section

