

Locus <u>L9661</u>	Dor 19 <u>9.1</u>	Fld <u>G</u>	Sq <u>AI32</u>	Loc. type <u>Floor makeup, fill to fl</u>
Open	Date <u>15, 07, 91</u>	High at <u>1.4.3.1 S</u>	Low at <u>1.4.1.1 N</u>	Seals: <u> </u> <u> </u> <u> </u> <u> </u>
Close	<u>29, 07, 91</u>	<u>1.3.9.6 NW</u>	<u>1.3.9.2 NE</u>	Sealed by: <u>L9623</u> <u>L9624</u> <u>L9625</u>
Floor: type <u>C,F</u>		<u>1.3.9.6 NW</u>	<u>1.3.9.2 NE</u>	Loci <u>L9623</u> <u>L9624</u> <u>L9625</u>
Length <u>3.0</u>	Width <u>2.4</u>	Vol <u> </u>	Drawn? <u>YES</u>	above <u> </u> <u> </u> <u> </u>
Value <u>S</u>	Remove <u>25, 07, 91</u>			below <u> </u> <u> </u> <u> </u>
Photo #(1) <u>70561</u>	Photo #(2) <u>70562</u>			Loci <u>L9703</u> <u> </u> <u> </u> <u> </u>
Written by: <u>BAT</u>	Checked by: <u>JRZ</u>			below <u> </u> <u> </u> <u> </u>

Unit	Phase	Stage	Stratum	PoM
Summary				

Opened: To excavate floor makeup of [F9623] and fill below

- Limits (N) Bordered by [L9677] and [W9626]
 (S) Bounded by S baulk of AI32
 (E) Bordered by E baulk of AI32 & [L9677]
 (W) Bordered by [L9539], [L9686] & [L9691]

Closed: Came down on floor [F9661] and mudbrick wall [W9704]

Matrix: The floor makeup of [F9623] consisted of at least three re-surfacings of crumbly Kurkar, with mudbrick debris, ash & charcoal, ^{especially} to the S; the fill below became more yellow and sandy to S, and looser mudbrick debris to N, and a patch of grey ash near [W9661] lots of pot sherds throughout

Relations: [L9623], [L9624], [L9625], and [F9623] cover and seal [L9661]. [L9661] covers [L9703], but does not seal it since evidence of [F9661] could not be seen with certainty across the entire locus when the floor was cleared. To the N & E, pit [L9677] cuts [L9661]. [L9677] comes down on [F9661] which underlies [L9677]. Also to the N, the fill of [L9661] is probably cut by [W9626]. [W9626] floats above [F9661]. [F9661] reaches mudbrick wall [W9704] (below [W9626]). Also to the E, [F9661] reaches the material in the E baulk of AI32. [F9661] continues into the E baulk of AI32. To the S, [L9661] reaches the material in the S baulk of AI32.

To the W, [L9661] & [F9661] are probably cut by pit [L9539]. Also to the W, the material of [L9661] probably reaches that of [L9686]. [F9661] also underlies [L9686]. In addition, [F9661] reaches mudbrick wall [W9704] which lies below [L9691] & [W9626]

Photo #(3) 70563 ; #(4) 70564 ; #(5) 70565

Additional Observations/Value: Although now fragmentary, [F9661] seems to have extended across all of [L9661].

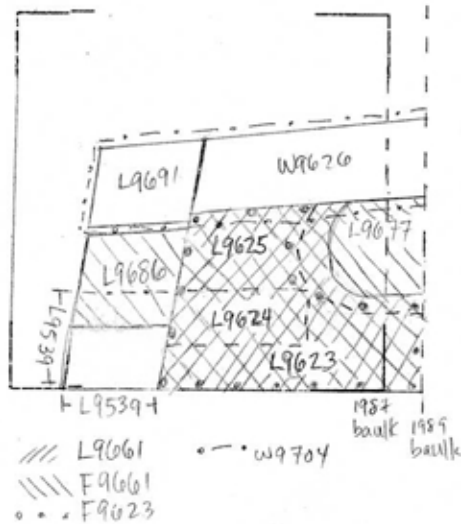
Sq.	Beg. Cio. St Lc	Eie. Eie. Df St Ob Ma R C Pi P2 P3	Comments
96414 AI32 (8), IRS.	14.31 14.16	sa sh cr 2 s iri ir2a	
96448 AI32 Pottery for restoration.	14.31 14.31	sa sh cr 3 s ir2	
96449 AI32 Iron fragment.	14.19 14.19	sa ot ir s	
96450 AI32 Possible grindstone fragment.	14.16 14.16	sa tw st s	
96453 AI32 Iron fragment.	14.21 14.21	sa ot ir s	
96466 AI32 Iron fragments.	14.14 14.14	sa ot ir s	
96472 AI32	14.31 14.16	sa ma bn s	
96473 AI32 Bag of shells. (8).	14.31 14.16	sa ma si s	
96500 AI32	14.16 14.11	sa sh cr 2 s iri ir2a	

Locus

L 9661

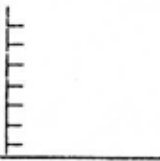
Sketch plan

AI32



oto

Section



Section

