

CLW

<b>Locus</b> L 9663	<b>Dor</b> 19 9.1	<b>Fld</b> G.	<b>Sq</b> A.K.3.3	<b>Loc. type</b> possible pit
<b>Open</b>	<b>Date</b> 1.5.07/9.1	<b>High</b> 1.4.63	<b>at</b> W	<b>Low</b> . . . . .
<b>Close</b>	1.7.07/9.1	1.4.45	SIE	. . . . .
<b>Floor:</b>	<b>type</b> . . . . .	. . . . .	. . . . .	. . . . .
<b>Length</b>	1.3	<b>Width</b> 1.2	<b>Vol</b> . . . . .	. . . . .
<b>Value</b>	d <sub>1</sub>	<b>Remove</b> 1.7.07/9.1	<b>Drawn?</b> Y, E, S	. . . . .
<b>Photo # (1)</b>	. . . . .	<b>Photo # (2)</b>	. . . . .	<b>Loci</b> L9645 . . . . .
<b>Written by:</b>	J.Y.S	<b>Checked by:</b>	J.R.Z	<b>above</b> . . . . .
				<b>Loci</b> L9679 . . . . .
				<b>below</b> . . . . .

<b>Unit</b>	<b>Phase</b> Gc (2)	<b>Stage</b>	<b>Stratum</b>	<b>PoM</b>
-------------	---------------------	--------------	----------------	------------

**Summary**

**Opened:** When a soil change in the western portion of [L9645] was noted from brown semi-sandy soil to a more greyish, slightly ashen, more cohesive matrix, called [L9663].

**Limits (N)** Bounded on the North by unexcavated material beneath [W9015].

**(S)** Bounded on the South by unexcavated material beneath [W9147] and by [L9669].

**(E)** Bounded on the East by [L9662].

**(W)** Bounded on the West by unexcavated material below the unexcavated part of [L9679].

**Closed:** When greyish matrix of possible pit was removed to reveal fallen mudbrick material of [L9679].

**Matrix:** Grey to brown slightly ashen soil with some pottery and bone, few stones, and some small plaster and karkar chunks.

**Relations:** [L9663] is covered by [L9645]. If [L9645] is the continuation of robber trench [L9511], then [L9645] probably cuts [L9663]. If [L9645] is fallen material (mudbrick?), then [L9663] cuts [L9645], but this relationship was not noticed until excavated to the level at which the soil change (see above) was discerned. [L9663] probably cuts the portion of [L9679] that it covers if it is actually a pit. If [L9663] is not a pit, then it merely covers [L9679]. [L9663] cuts [L9662] and is probably the continuation of the pit material of [L9669]. If [L9663] is not a pit, then it is cut by [L9669]. [L9663] extends beneath [W9147] and the unexcavated portion of [L9511], but does appear to extend beneath [W9015]. This indicates that if [L9663] actually is a pit, then its northern edge is near the southern limit of [W9015], mainly because the line of the pit in section below the unexcavated portion of [L9511] stops short of [W9015] at [W9015]'s southern limit.

\* see section

IS '02: perhaps part of W9975 RT?

**Additional Observations/Value:** Possible pit beneath Pila's wall (W9147) which cuts fallen mudbrick material.

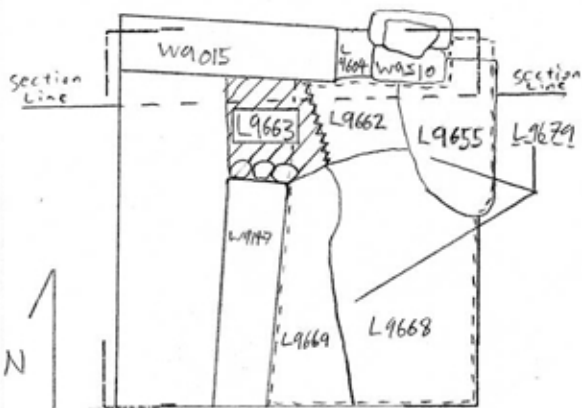
Locus Basket List

L 9663

Bask. No.	Sq.	Beg. Ele.	Cl. Ele.	St. Df.	Lc St	Ob	Ma	R	C	P1	P2	P3
96519	AK33	14.63	14.45	sa		sh	cr	2	d	ir2		
i pr? i IDP. Link with #96559.												
96528	AK33	14.63	14.45	sa		ma	bn		d			
96562	AK33	14.52	14.44	sa		sh	cr	2	d	ir2		
i BIC; i BOR.												

Locus  
L 9663

Sketch plan

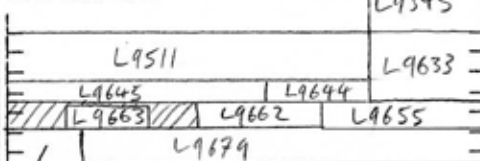


\* Note: Border of L9663 and L9662 was never clearly defined, but rather existed over a wider spectrum

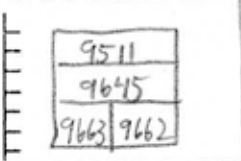
Photo

Photo

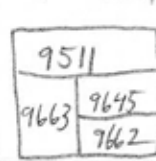
Section



Section Now



Hypothetical



unexcavated