

Locus L 9678	Dor 1991	Fld G.	Sq AI32	Loc. type Floor makeup, Fill to Floor
Open	Date 1.8.07.91	High at 14.51 E	Low at 14.48 N	Seals: L9685
Close	1.8.07.91	14.46 E	14.45 N	Sealed by: L9673
Floor: type Ce		14.46 E	14.45 N	Loci L9673
Length 2.2	Width 0.8			above
Value S	Remove 1.8.07.91		Drawn? Yes	
Photo #(1) 70413	Photo #(2) 70414			Loci L9685
Written by: RAT	Checked by: J.R.Z			below

Unit	Phase	Stage	Stratum	PoM
------	-------	-------	---------	-----

Summary

Opened: Came down on floor [F9673]; opened [L9678] as floor makeup and fill below

Limits (N) Bounded by the N bank of AI32

(S) Bounded by [L9165]

(E) Bounded by the E bank of AI32

(W) Bounded by the material below [W9051]

Closed: Came down on floor [F9678]; opened [L9685]

Matrix: Patchy, thin crushed-kurkar surface, with mudbrick debris below; the mudbrick material became more densely packed in the W; less pottery than in fill to floor [L9673], but came upon a scaraboid (#96568) to the W.

Relations: [L9678] covers and seals [L9685]. [L9673] covers and seals [L9685]. To the N, [L9678] reaches the material at the bank line between AI32 and AI33, but since AI33 has not yet been excavated here, we cannot yet determine their relation. To the E, [L9678] reaches the material in the 1989 E bank of AI32. In 1989 the E bank of AI32 was cut back .5 m because of heavy erosion, without being excavated stratigraphically. Therefore, there are no loci that directly relate to [L9678]. To the W, [W9051] floats above [L9673]. To the S, [L9678] may be identical to [L9165], described as "fill partly above floor." In [L9165], however, the floor was only seen in the southern part of AI32. [L9165] ran across most of the eastern half of AI32, with a matrix of "clayey" and mudbrick material. The elevation of the floor in [L9165] was 14.45, sloping down to 14.36 into square AI31 to the S.

* It is unclear whether [F9678] continues into the pedestal below [W9051], both because of its fragmentary nature and the presence of mudbrick material in the western part of the locus which may interrupt the floor.

Photo #(3) 70415

Additional Observations/Value: Although fragmentary, [F9678] spread across entire locus and is part of a series of sealed floors.

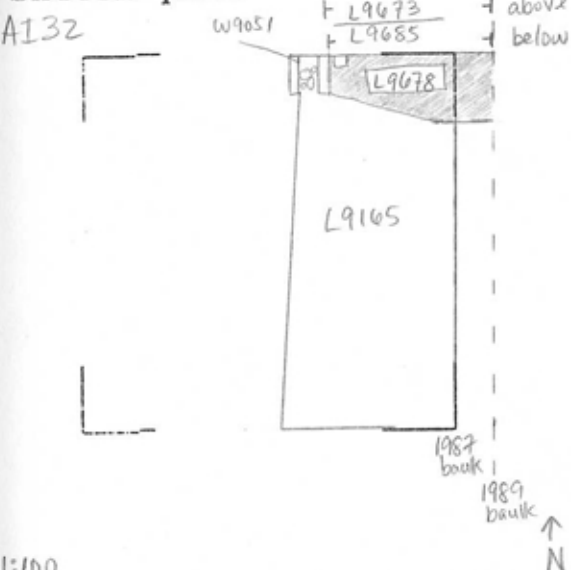
Locus Basket List

L 9678

Bask. No.	Sq.	Beg. Ele.	Clo. Ele.	St Df	Lc St	Ob	Ma	R	C	P1	P2	P3	
98588	A132	14.49	14.49	sa		se	st			s			
Seal/scarab amulet.													
98589	A132	14.50	14.45	sa		sh	cr	2		s	ir1	ir2a	ir2c
Only one piece ir2c!													
98577	A132	14.50	14.45	sa		ma	bn			s			

LOCUS
L 9678

Sketch plan



Section

Section

