

Locus L 9681	Dor 19 9.1	Fld 6	Sq A.I.3.4.	Loc. type PIT
Open 1.8/0.7/9.1	High 15.4.1	at SE	Low 15.0.7	at SW
Close 0.8/0.8/9.1	High 15.0.8	at SE	Low 15.0.4	at SW
Floor: type	Length 3.0	Width 2.5	Vol	Drawn? YES
Value 2d	Remove			
Photo # (1)	Photo # (2)			
Written by: KIAL	Checked by: JRZ			

Unit	Phase	Stage	Stratum	PoM
-----------------------	------------------------	------------------------	--------------------------	----------------------

Summary

Opened: when northern material in L9681 came to match L9682, collapsed and combined both into L9682, thus leaving the remaining quarter-circle pit L9681.

Limits (N) L9682

(S) W9684 L9683 (mudbrick)

(E) L9700 (mudbrick) L9701

(W) L9680

Closed: End of season - Not closed.

Matrix: The hard-packed dark brown, high concentration of sherds pit soil in L9681 was dissimilar to the loose, light grey pit soil in L9649 and the medium brown, loose fill soil in L9652 and L9682. The dark brown, high concentration of sherd soil in pit-like L9701 is similar to L9681. L9701 is pure mudbrick and thus dissimilar.

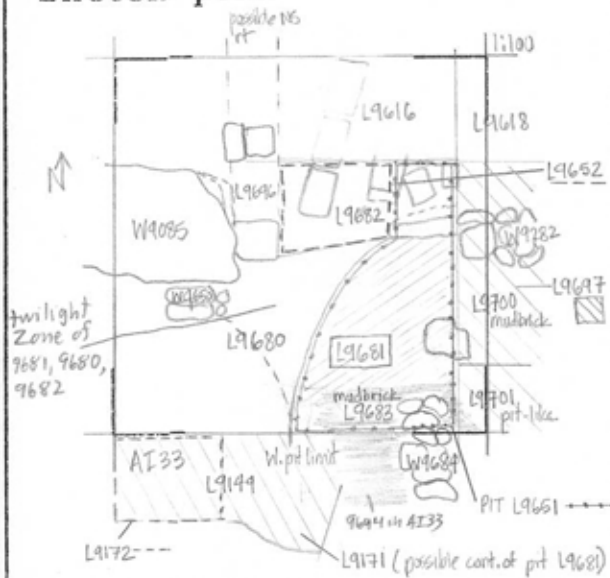
Relations: L9681 is essentially a continuation of pit L9651 above, and was not excavated much once the L9681 was opened (see levels). At the north, L9681 may be cut by robber-trench meeting / wall area L9682 which is a highly disturbed and somewhat useless area. The main robbing action in L9652, L9682 that may reach or cut pit L9681 is the EW robber trench (L9617, N.L9697, L9652, L9682) that robs W9282. W9282 was discovered when excavating eastern bulk material L9697 and L9700 which may be cut by L9681. At the east, mudbrick L9700 cuts and pit-like material L9701 reaches L9681 on the east; L9701 may be a continuation of pit L9681. At the south pit L9681 cuts L9683, mudbrick, and W9684 which continues into AT33. Pit L9681 cuts L9683 and W9684. The pit that L9651 and L9681 are part of slopes inward from S to N and may only cut the upper part of L9683. In 1977, at the same levels (15.70-15.05) north in AT33 L9199 a sandy mudbrick, and sherd soil that was closed and divided into L9172 and L9171 because of soil change. L9172 probably is the continuation of AT34's SE pit and L9171 is the continuation of AT34's SW pit (L9651, L9681) rather than "Fill" as it was identified. At the east, L9681 is cut by pit L9680 which contains later pottery and appears to be taking a semi-circular "BITE" out of L9681.

Additional Observations/Value: L9681 is an unsealed and disturbed pit that may contaminate loci around it.

LOCUS

L 96,811

Sketch plan



Photo

Photo

Section

Section