

Locus L 9686	Dor 19 9.1	Fld G.	Sq A.13.2	Loc. type Cleaning locus, to floor		
Open	Date 1.9.07/9.1	High 14.2.0	at E ₁	Low 14.2.0	at W ₁	Seals: _____
Close	25/07/9.1	13.9.7	E ₁	13.9.2	W ₁	Sealed by: _____
Floor: type	C _f	13.9.7	E	13.9.2	W	Loci _____
Length	L.2	Width	L.L	Vol		above _____
Value	d	Remove	25/07/9.1	Drawn?	YES	below _____
Photo #(1)	70561	Photo #(2)	70562	Loci	L9703	_____
Written by:	RAT	Checked by:	JRZ	below	_____	_____

Unit	Phase	Stage	Stratum	PoM
Summary				

Opened: To remove soil wash caused by erosion since 1989 season

Limits (N) Bounded by L9691
 (S) Bounded by L9539
 (E) Bounded by L9661
 (W) Bounded by L9422

Closed: Came down on floor [F9661]; opened [L9703] as floor makeup & fill below

Matrix: Mudbrick debris and sandy, grey soil, lots of pottery & bones; Special finds include a grindstone and a loom weight

Relations: Since [L9686] is a cleaning locus, some of its relations are uncertain. [L9686] covers, but does not seal, the part of [F9661] that underlies [L9686]. To the N, the relation between [L9686] and [L9691] is uncertain since both are cleaning loci. To the S, [L9686] is probably cut by pit [L9539] (excavated in 1989 season). To the E, the relation between [L9686] and the fill of [L9661] is uncertain, but [F9661] underlies [L9686]. To the W, the material of [L9686] is probably identical to that of [L9422] (1989 season).

Photo #(3) 70563; #(4) 70564; #(5) 70565

Additional Observations/Value: Although a cleaning locus, material from L9686 is mainly Iron Age.

Locus Basket List

L 9666

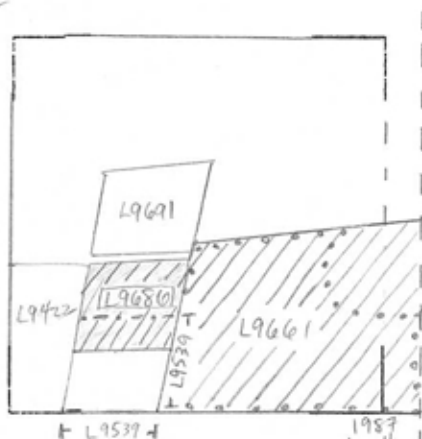
Bask. No.	Sq.	Beg. Ele.	Clc. Ele.	St Df	Lc St Ob	Ma	R	C	Pi	P2	P3
96627	AI32	14.20	14.02	ns	sh cr	0	n	ir			
	i pr.										
96628	AI32	14.20	14.02	ns	ma bn		n				
96632	AI32	14.03	14.03	ns	tw st		n				
	Loom weight.										
96638	AI32	14.02	14.02	ns	tw st		n				
	Grindstone?										
96772	AI32	14.02	13.92	ns	sh cr	2	n	iri			
96784	AI32	14.02	13.92	ns	ma bn		n				

Locus

L 9686

Sketch plan

AI32



- - - L9539
- L9661
- /// F9661



Photo

Photo

Section

Section

1:100