

W³

Locus W 9704	Dor 1991	Fld 6	Sq AI32	Loc. type Card / mudbrick wall
Open Date 29/07/91	High at 13.98 E	Low at 13.94 W	Seals: _____	
Close Date 08/08/91	13.61 W	13.55 E	Sealed by: W9626	
Floor: type	Width L.2	Vol	Loci W9626 L9691 L9661	
Length 4.0	Remove	Drawn? YES	above	
Photo #(1) #71381	Photo #(2) #71382	Loci	below	
Written by: RAJ	Checked by: JRZ			

Unit	Phase	Stage	Stratum	PoM
------	-------	-------	---------	-----

Summary

Opened: In excavating [L9691] & [L9661], came down upon mudbrick wall, [W9704]

Limits (N) Bordered by [L9712], [W9728], and [L9730]

(S) Bordered by [F9661] and below

(E) Bounded by E bank of AI32

(W) Bordered by [W9295]

Closed: End of Season; Not Closed

Matrix: Heavy, chocolate-brown mudbricks, ca. 30 cm. x 10 cm., with white fugue lines visible along S face and top at W end; three courses (possible fourth) of bricks stacked one on top the other, in alternating rows

Relations: [W9626] is built on top of ^{E. part of} [W9704], and thus seals ^{E. part of} [W9704] below. [W9704] seals the material below it. To the N, [F9712] seems to reach [W9704], but this is not certain. [L9713] floats above [W9704], as [W9728] probably also, but until further excavation, the latter remains unknown. The relation between [L9730] and [W9704] is also uncertain, but [L9730] probably reaches [W9704]. The fill of [L9712] floats above [W9704]. To the S, the fill of [L9661] floats above [W9704], but [F9661] reaches it. The fill of [L9703] reaches [W9704], as does [F9703] but only patchily, and primarily in the W. The fill of [L9727] also reaches [W9704], while [W9704] appears to be built on top of [F9727]. This is seen particularly along the E, and at the W edge of pit [L9736]. These observations regarding [F9703] and [F9727] seem to contradict each other. *We will not be certain until further excavation. The material of pit [L9736] lies below [W9704]. To the E, [W9704] reaches the E bank of AI32. To the W, the relation between [W9295] and [W9704] is uncertain, but they may be identical. * [F9727] also dipped below [F9703] in many places, particularly in the center. But elsewhere, only one floor or the other could be observed, but not both, implying that there was only a single and a re-surfacing. If this were the case, our observations of the [F9703] reaching [W9704] Photo #(3) 71383; #(4) 71384; #(5) 71385; (#5 - #12) 71321 - 71328

Additional Observations/Value:

and [L9727] underlying [W9704] are contradictory

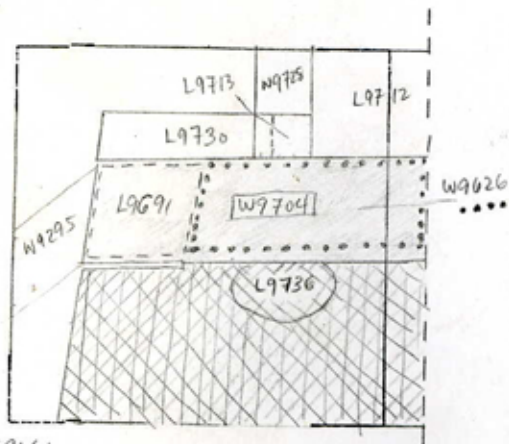
1992 Note: [F9559], [F9703], and [F9727] may underlie [W9704], just as [F9559] underlies [W9295]. [F9712] appears to reach [W9704] rather than [W9626] above, since it was discovered when excavated below [L9813] that bottom of sole of [W9626] had been reached.

LOCUS

W 97.04

Sketch plan

AI32



/// F9661

\\ F9703

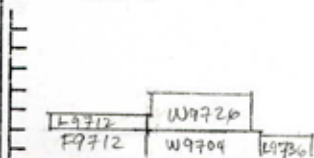
|| F9727

↑
1:00 N

Photo

Photo

Section



Section



(entered)

Locus WJ 9704	Dor 19 92	Fld G ₁	Sq A132	Loc. type Card 2 Mudbrick wall
Open 09/07/92	High at 12.98 E	Low at 13.94 W	Seals: _____	
Close 14/08/92	12.64 W	12.57 E	Sealed by: _____	
Floor: type _____	_____	_____	Locl _____	
Length 4.0	Width 1.2	Vol _____	above _____	
Value 1	Remove 1/1/1	Drawn? YES	below _____	
Photo # (1) 86425	Photo # (2) _____		Locl _____	
Written by: RAT	Checked by: JFZ		below _____	

Unit	Phase	Stage	Stratum	PoM
Summary				

Opened: See card 1

Limits (N) See card 1 for limits

(S) _____

(E) _____

(W) _____

Closed: End of Season - Not closed

Matrix: See card 1

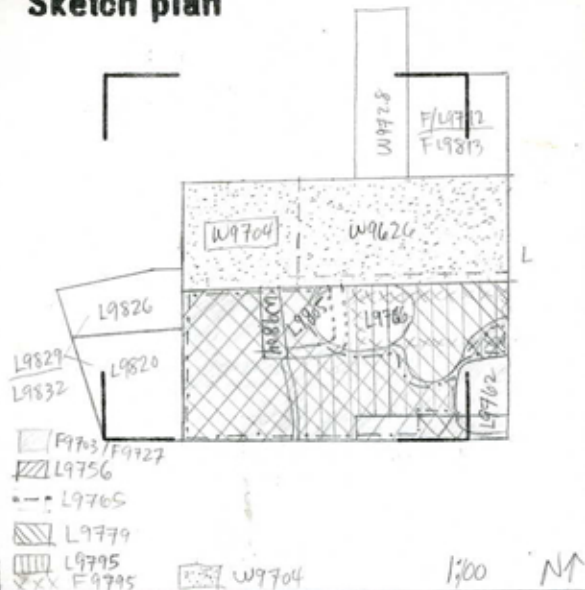
To the North, the relation between W9704 and W9728 is still uncertain; the mudbrick courses of W9728 definitely float above W9704; the sole of W9728 appears to abut W9704, rather than cut it.

Relations: _____ in the 1991 locus cards

Also to the North, the relation between W9704 and F9712 was described as uncertain, and that F9712 "seems to reach" W9704. In excavating L9813 (floor/step of F9712 and fill down to floor), it was determined that the level of F9712 corresponds with the bottom of the stone sole of W966 built atop W9704. Therefore it seems likely that W9626 cuts F9712, whereas F9712 was in its last phase of use in association with W9704. Also to the North, L/F9813's relation to W9704 is uncertain. It is possible that F9813 underlies W9704, just as F9703 and F9727 to the South may do. F9813 is at approximately the same level as F9703 and may be identical to it. If underlying W9704, F9703 and F9813 (and F9727 a few cm. below F9703) may be leveling surfaces of the destruction debris below L9756 to the South may also be one of these leveling surfaces. If so, then W9704 floats above destruction debris loci L9765, L9779 and L/F9795. To the West, the relation between W9704 and L9826 is uncertain. The relation between W9704 and destruction debris loci below L9826, i.e., L9829 and L9832 is also uncertain, per the above discussion. Only after W9704 is excavated will these relations be clear; likewise regarding the relation of pit L9766 to the South, since L9766 cuts the destruction debris South of W9704. Also to the South, W9804 appears to underlie W9704, disappearing into destruction debris, thus lending credence to the hypothesis of W9704 floating above the destruction. Installation L9805 which is bonded to W9804 may also underlie W9704 and disappear into the destruction debris beneath it.

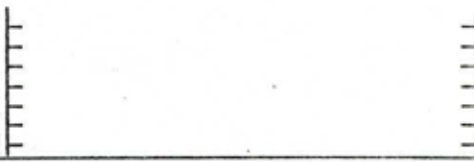
Additional Observations/Value: Note: The closing elevations given here correspond to those of L9795, the lowest "possible" relation to W9704 excavated in 1992. * pit L9766 is a continuation of pit L9736 in 1991 season.

Sketch plan

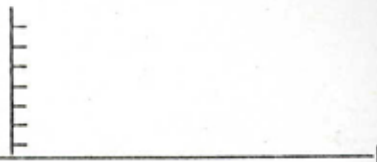


Photo

Section



Section



External

Locus W 9704	Dor 19 913	Fld G ₁	Sq 4132	Loc. type Wedbrick wall
Open Date 0.5/23/93	High at 13.98	Low at 13.94		Seals: _____
Close Date 0.3/28/93	13.66	13.64		Sealed by: _____
Floor: type Length 4.0	Width 1.2	Vol		Locl above _____
Value	Remove	Drawn? YES		Locl below _____
Photo #(1) See Isra	Photo #(2)			
Written by: RGS	Checked by: J.R.Z.			

Unit	Phase	Stage	Stratum	PoM
------	-------	-------	---------	-----

Summary

Opened: Beginning of season

Limits (N) F/L9857, F/L9878 and F/L9930.
 (S) See previous season cards
 (E) See previous season cards
 (W) See previous season cards

Closed: End of season - Not closed, but floating.

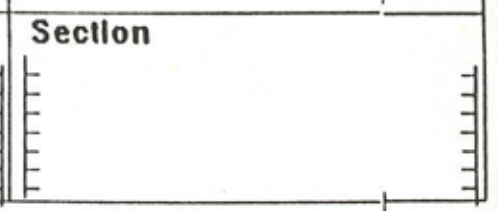
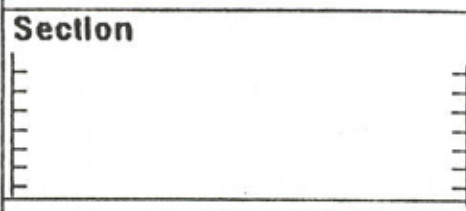
Matrix: Both faces of W9704 have been severely eroded in the off season.

Relations: There is a discrepancy between the N. relations as seen this season and the S. relations recorded last season. L/F9857 and L/F9930 both appeared to reach W9704. However, F9930 seemed clearly to continue below W9704 suggesting that the base of W9704 is at approximately 13.66. This directly contradicts what was seen on the S. face where the wall continues down to 12.57. It is possible that the N. face below W9626 has not been identified and that the floors that appear to go under W9704 have not yet reached the N. face. F9957 and F9930 did not rise as they approached W9704 so both these floors may also not have yet reached the N. face of W9704.

This means that all relations of loci below L9930 (L9953, L9978, L9982) which at this time seem to go below W9704 are also uncertain. It is especially puzzling in that L9978 + L9982 are destruction material which can be seen below what seems to be the W end of W9704.

Additional Observations/Value: Need to remove it to check N-S destruction relations.

Sketch plan W99704/1:100



Locus WJ 9704	Dor 19 ₉₄	Fld G	Sq AT32	Loc. type Mudbrick wall CARD 4
Open Date 0.6/27/94	High at 1.4.1.0	Low at 1.3.9.8	at E	at W
Close Date 1.4/07/94	High at 1.3.4.7	Low at 1.3.4.2	at E	at W
Floor: type Lip	High at 1.3.4.6	Low at 1.3.3.0	at E	at S
Length 4.0	Width 1.2	Vol	Remove 1.4/07/94	Drawn? yes
Value S	Remove 1.4/07/94	Drawn? yes	Seals: 1.8038	Sealed by: WJ 9626
Photo # (1) none	Photo # (2)	Loci above WJ 9626	Loci below 1.8038 1.8039	
Written by: CAB	Checked by: JRZ			

Unit	Phase	Stage	Stratum	PoM
------	-------	-------	---------	-----

Summary

Opened: Upon Removal of [W9626], opened [W9704] for excavation to probe floor relations below this wall to previous seasons cards.

Limits (N) [F9554]
 (S) see previous season's cards.
 (E) "
 (W) "

Closed: [W9704] closed when the floor [F9703] = [F9953] = [F9834] which underlies [W9704] was defined. [L18038] = sealed material and [L18039] = unsealed material below [W9704]'s floor.

Matrix: see previous seasons cards. West extension had eroded heavily during off-season. Dense chocolate brown mudbrick with kuskaur fugaline mortar - small kuskaur pebbles - unexciting for sherds or other small finds.

Relations: [W9704]'s East extension is sealed by [W9626] above, which was removed for [W9704]'s excavation. Excavation of [W9704] finished as it came down upon [F9703]. [F9703] only survives under the east two-thirds of [W9704]. [F9703] seems to be the same as [F9953] to the North West and [F9834] to the North East.

[W9704] may seal [L18039] on the west, but this is uncertain due to heavy erosion. The stone portion of [W9728] seems to dovetail into [W9704]; if not [W9728] certainly abuts [W9704]. [W9704] covers [L18039] but no floor was found in that area so it was decided to call [L18039] unsealed. The previously excavated loci [L9703], [L9953], [L9834]'s floors all underlie [W9704] - assigned [F9703]. The floor makeup and fill below [F9703] was assigned [L18038]. [L18038] is covered and sealed by [F9703] and [W9704].

To the Northwest F9554 reaches the bottom most level of [W9704] and does not appear to extend below, though given the very eroded state of both [F9554] and [W9704] this relation must remain uncertain.

Additional Observations/Value: High/med value. Sits on [Does not cut] [L18038] = [F9703] = [F9953] = [F9834], which extend entirely underneath [W9704] - and are the last few floors before the "destruction" layer. - See 1.8038 for floors below.



117478



117393



117380



117482



117483

LOCUS

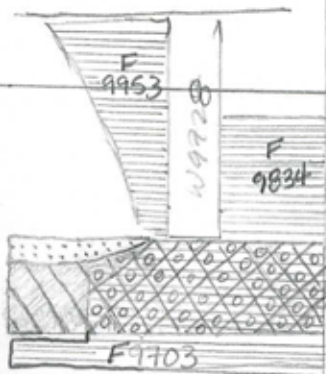
W 9704

Sketch plan 1:100

AT



33



32

- W9626
- W9704
- F9703/9953/9834
- L18038
- L18039
- F9554

Section



117279



117277

Section