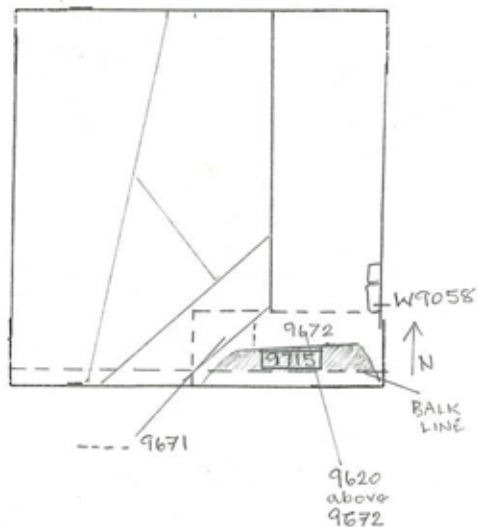


Locus
WJ 97.1.5

Sketch plan



Photo

Photo

Section

Section



9715 is against bulk
at bottom of picture

Locus WJ 9715	Dor 19 93	Fld G ₁	Sq A1314	Loc. type Fieldstone Wall (Continuation of 1971)
Open Date 01/07/93	High at 14.62 E ₁	Low at 14.42 E ₁	Seals: _____	
Close Date 04/08/93	13.43 E ₁	13.33 W ₁	Sealed by: _____	
Floor: type L	Width 0.4	Vol. _____	Locl above _____	
Length 2.4	Remove 1/1/1	Drawn? Y, E, S	Locl below _____	
Photo #(1) See Is 19	Photo #(2)			
Written by: SGO	Checked by: JRLZ			

Unit	Phase	Stage	Stratum	PoM
Summary				

Opened: See card 1, 1991 Season.

Limits (N) Several loci, from top to bottom: L9850, L9874, L9877, L9895, L9913, L9946, W9964, and L9979

(S) Bank

(E) Bank

(W) Bank

Closed: End of season, not closed

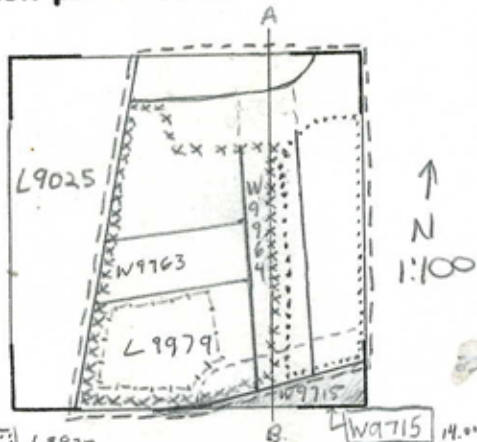
Matrix: Field stones, 40x25 cm down to fist sized. Preserved approximately 1.2 m above the base of square at the end of 1993 season: Wall thickness cannot be determined, since W9715 is primarily covered by the S banks of A131. There are approximately 8 courses, but they are not laid in course fashion, an uneven and of different sized stones. All visible portions of W9715 appear to be of the same phase.

Relations: Since W9715 was defined in a previous season, and since the foundation of W9715 had yet to be reached at the close of the 1993 season, there are no loci above or below W9715. However, several superimposed loci reach W9715. In the order of their excavation, they are: L9850, L9874, L9877, L9895, L9913, L9946, W9964, and L9979, all to the North.

The most significant relations are between W9715, L9895, and W9964. First, W9715 may have been one source of the stone rubble deposit encountered in L9895. Second, W9964 clearly abuts W9715.

Additional Observations/Value: Value for stratigraphic analysis is high.

Sketch plan W9715



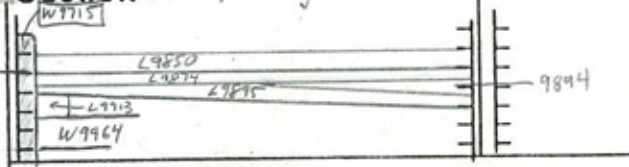
- L9877
- L9850, and L9874 underneath
- L9895 L9913 L9946

Photo



102279

Section A → B, looking W



Section



Locus W 9715	Dor 1914	Fld 16	Sq A431	Loc. type core III FIELD STONE AND MUDBRICK
Open Date 04/17/94	High at 14.63	at E	Low at 14.54	at W
Close Date 03/08/94	12.93	W	12.84	E
Floor: type	Length 3.3	Width 1.1	Vol	Drawn?
Value 1	Remove -/-/-			
Photo #(1) see T31a	Photo #(2)			
Written by: JGM	Checked by: JRZ			

Unit	Phase	Stage	Stratum	PoM
------	-------	-------	---------	-----

Summary

Opened: CONTINUED EXCAVATING ALONGSIDE W9715 WHICH WAS EXCAVATED IN 1991 AND 1993.

Limits (N) W9964, L18003, L18002, L18018, L18024, L18025, L18071
 (S) BULK
 (E) BULK
 (W) BULK UNDER DRAIN 19025

Closed: CAME DOWN ON F18077 WEST OF W9964. W9715 ENDED AT THIS POINT AND AT THE SAME LEVEL EAST OF W9964. NOT CLOSED THOUGH AS IT WASNT REMOVED

Matrix: HEAD SIZED FIELD STONES DOWN TO 13.32m W - 13.15 E. AT THIS LEVEL W9715 BECOMES MUDBRICK. THREE COURSES OF 9cm x 20cm BRICKS. THE BRICKS DO NOT APPEAR TO BE UNIFORMLY RECTANGULAR AS SOME HAVE ARCHING SIDES

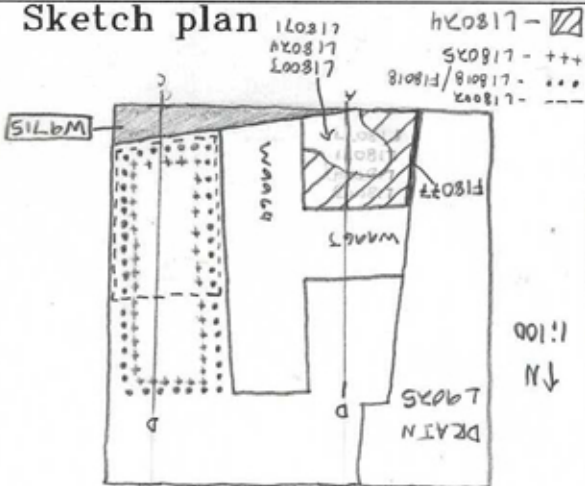
Relations: EAST OF W9964, L18002 ABOVE AND L18018 BELOW REACH W9715. F18018 REACHES THE BOTTOM OF THE STONE PHASE OF W9715 AND MAY BE SANDWICHED BETWEEN THE STONE AND MUDBRICK PHASES OF W9715. L18025 REACHES THE MUDBRICK PHASE OF W9715. W9964 ABUTS W9715. TO THE WEST OF W9964, L18003 ABOVE AND L18024 BELOW REACH THE STONE PHASE OF W9715. F18003 AND F18024 WHICH ARE PROBABLY THE SAME FLOOR OR CLOSE RESURFACINGS REACH THE BOTTOM COURSE OF THE STONE PHASE OF W9715 AND PROBABLY RELATES TO F18018 TO THE EAST. L18071 BELOW REACHES THE MUDBRICK PHASE OF W9715. DHANTON FLOOR F18077 WHICH WAS NOTICED ON THE WEST BULK APPERS TO REACH W9715 AT THE BOTTOM OF THE MUDBRICK PHASE. SINCE THE MUDBRICK PHASE OF W9715 IS CONVENIENTLY PLACED BETWEEN F18003/F18024 AND F18077, WHICH BOTH SLOPE TOWARDS EACH OTHER BEFORE GOING UNDER W9964. IT IS UNDER F18077 THAT THE DESTRUCTION LAYER IS FOUND. THUS THE MUDBRICK PHASE OF W9715 AND F18077 REPRESENT THE EARLIEST PHASE OF CONSTRUCTION AFTER DESTRUCTION AFTER MUDBRICK W9715 COLLAPSED, THE STONE PHASE, F18003/18024, AND WALLS 9963 AND 9964 WERE CONSTRUCTED.

Additional Observations/Value: FIELDSTONE WALL WITH MUDBRICK FOUNDATION. HIGH VALUE FOR UNDERSTANDING POST DESTRUCTION CONSTRUCTION.

Locus

W 1715

Sketch plan



167624



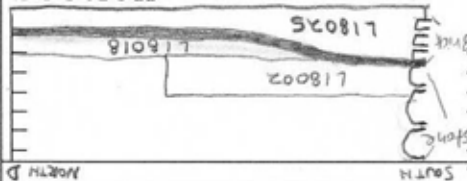
167620



167623

Photo

Section



Section

