

Locus L 9721	Dor 19 q.l	Fld G _i	Sq A.K.33	Loc. type mudbrick/rubble debris
Open	Date 05/08/91	High at 14.08 E	Low at 13.97 S	Seals: _____
Close	09/08/91	14.08 E	13.97 S	Sealed by: _____
Floor: type				Loci L1679 _____
Length L.S	Width 0.8	Vol	Drawn? YES	above _____
Value 14	Remove			below _____
Photo #(1)		Photo #(2)		Loci _____
Written by: JYS		Checked by: JRZ		Loci _____

Unit	Phase	Stage	Stratum	PoM
------	-------	-------	---------	-----

Summary

Opened: When [L9679] came down on [W9066], [L9721] was the name given the area south of [W9066] that was not pit [L9720].

Limits (N) Bounded on the N by [W9066]

(S) Bounded on the S by the southern limit of AK33.

(E) Bounded on the E by the eastern limit of AK33.

(W) Bounded on the W by [L9720].

Closed: Not closed, end of season.

Matrix: Brown (fallen?) mudbrick material with bits of karkar and plaster, also fallen field stones. Locus was not excavated so further descriptions cannot be applied.

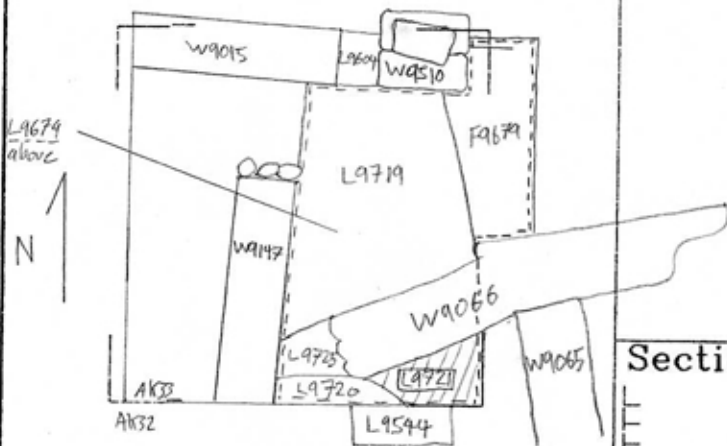
Relations: Relations are tentative because the locus was not excavated. If [L9721] is fallen mudbrick debris as [L9679] was, then it reaches [W9066]. If it is earlier than [W9066] then [W9066] cuts [L9721]. [L9721] reaching [W9066] is the more likely of the two scenarios. [L9721] is cut by [L9720]. [L9721] may be the continuation of [L9544] in AK32, since it has similar levels and a similar matrix.

Additional Observations/Value: Fallen mudbrick locus reaching Iron Age wall. Not excavated. Potential High Value (floors, restoration pottery, insitu vessels, etc.)

LOCUS

L 97211

Sketch plan



Photo

Photo

Section

Section