

Locus W9729	Dor 19 9.1	Fld G.	Sq ^{AW} 41.33	Loc. type Wall
Open	Date 05/08/91	High at 1.5.02 E	Low at 1.4.83 W	Seals: _____
Close	07/08/91	1.4.46 W	1.4.36 E	Sealed by: _____
Floor: type	_____	_____	_____	Loci 9096 9684 9723 9716
Length 3.5	Width 0.4	Vol. _____	Drawn? YES	above 9723 _____
Value 1	Remove 1/1/1	_____	_____	below _____
Photo #(1) _____	Photo #(2) _____	_____	_____	_____
Written by: RJS	Checked by: JRZ	_____	_____	_____

Unit _____	Phase _____	Stage _____	Stratum _____	PoM _____
------------	-------------	-------------	---------------	-----------

Summary

Opened: L9723 came down on W9729 which extended W. below W9096 when it was found continuing below L9723.

Limits (N) L9731, W9684 and L9630

(S) L9732 and fill below W9096.

(E) W9266

(W) L9694.

Closed: End of season. Not closed.

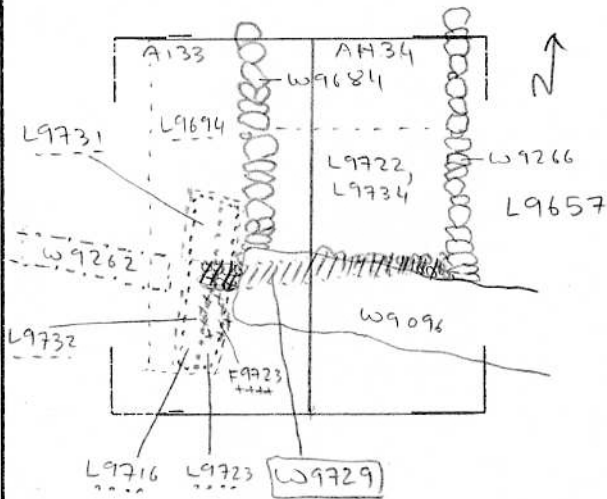
Matrix: Mostly made of head or half-head size cobbles. Some fist-size cobbles. Not similar to any surrounding walls. So far 4 courses have been uncovered and the wall does not float.

Relations: L9716 and L9723 cover W. extension of W9729. L9722 covers E. extension of W9729. The wall appears to continue between these parts below W9096. W9684 covers a small area of W9729 W. of W.9096. To the N. L9731 and L9736 reach W9729. To the S., L9732 and probably the fill below W9096 reach W9729. To the W., L9694 reaches W9729. To the E. W9729 appears to abut W9266, and does not seem to dovetail, cut or be cut by W9266. It is possible the W9729 continued E. of W9266, the remnants of which are rubble in L9657. Where W9729 enters the fill below W9096, it dovetails with W9684 (which is perpendicular to it). F9723 to the S., sloped upwards to the upper course of W9729 and may have reached it. W9729 is on a direct line with W9262, to the W., a mud-brick wall sitting on a stone socket. It is possible that W9729 is either built on top of W9262 or that W9262 is an E. continuation of W9729, and in fact reaches W9729. It is currently too difficult to determine. It is not at all clear why W9729 ends on a flat W. face; there is no evidence for a robber trench nearby.

Additional Observations/Value: wall on line with W9262, dovetailing with W9684 and abutting W9266.

LOCUS
W 9729

Sketch plan



Se

(contract)

Locus W9729	Dor 19 92	Fld G ₁	Sq A1/AH/33	Loc. type Wall Card 2
Open 14/07/92	High at 15.02 E	Low at 14.83 W	Seals: _____	
Close 14/08/92	High at 14.00 E	Low at 13.95 W	Sealed by: _____	
Floor: type _____	Length 3.5	Width 0.4	Vol _____	Locl _____
Value _____	Remove _____	Drawn? YES	above _____	
Photo # (1) See Isra	Photo # (2) _____	Locl _____		_____
Written by: RSS	Checked by: JRZ	below _____		_____

Unli	Phase	Stage	Stratum	PoM
Summary				

Opened: To renew excavations in area between W9266 and W9684, and W of W9684.

Limits (N) L9755, L9759, L9827
(S) See previous season card
(E) See previous season card
(W) W9262

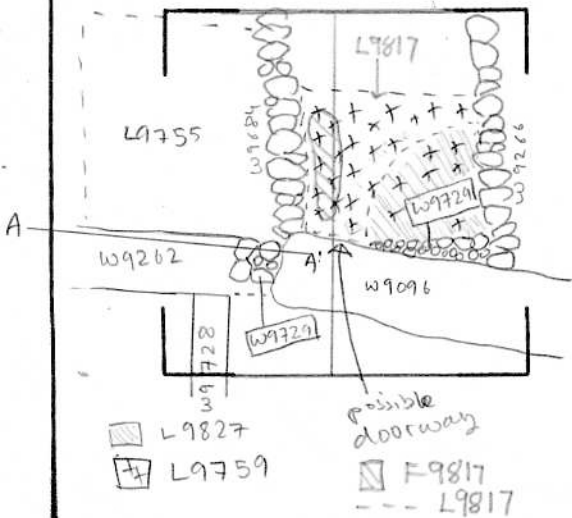
Closed: End of season - not closed.

Matrix: See previous season card. In the W. extension of W9729, six courses were uncovered. However, one and possibly two courses have been lost to erosion since last season in this area. In the E, four courses have been uncovered.

Relations: See 1991 A133 card for all previous relations. This season it has become probable that W9729 is in fact two walls with a doorway in between. The first wall runs from W9266 W. to the opening of the doorway. The other side of the doorway is W9684. The second wall runs W. from W9684 until it meets W9262. This is not yet certain as both walls retain a single number - it is obscured by the large roman foundation L9096 (Anti-Blob). L9759 and L9827 both reach the N. face of W9729. L9755 was probably cut by the N. face of W9729. W9729 rests on a wallbrick continuation of the stone foundation for W9262. Whether W9729 and W9262 are the same phase is uncertain. It is possible that W9729 cuts W9262 and forms a corner with W9728 to the S. However, W9729 may also continue as either the wallbrick superstructure of W9262 or may have been a stone wall sitting on the wallbrick in W9262 that was later robbed out. This last possibility seems the least likely. There is no relation between 19817 and W9729 (F) though F9817 is on a N-S line matching the conjectured doorway. However, F9817 does not reach the doorway, W9684 or W9729.

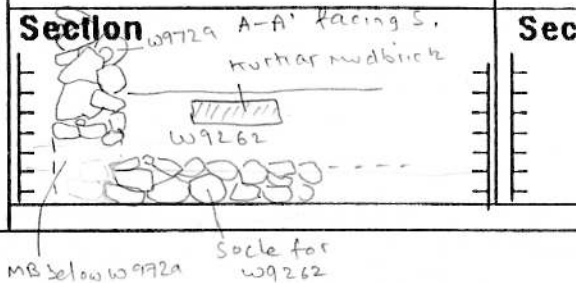
Additional Observations/Value: _____

Sketch plan 1:100



Photo

Section



Locus W 9729	Dor 1913	Fld G1	Sq A H1/A133	Loc. type WALL CARD #3	entered
Open	Date 02/07/13	High at 15.02 E1	Low at 14.83 W1	Seals: _____	_____
Close	06/08/13	13.510 W1	13.49 E1	Sealed by: _____	_____
Floor: type	CF	_____	_____	Locl SEE PREVIOUS SEASONS CARDS	_____
Length 3.5	Width* 0.4	_____	Vol _____	above _____	_____
Value 1	Remove _____	_____	Drawn? YES	below _____	_____
Photo #(1) _____	Photo #(2) _____	_____	_____	Locl UNEXCAVATED	_____
Written by: SEIR	Checked by: J.R.Z.	_____	_____	_____	_____

Unit	Phase	Stage	Stratum	PoM
Summary				

Opened: CONTINUED AT BEGINNING OF SEASON

Limits (N) L9994, L9937, L9876, L9855

(S) SEE PREVIOUS SEASONS CARDS

(E) SEE PREVIOUS SEASONS CARDS

(W) SEE PREVIOUS SEASONS CARDS

Closed: NOT CLOSED, END OF SEASON

Matrix: TWO PHASE WALL, WITH THE UPPER PHASE CONSISTING OF HEAD TO DOUBLE HEAD-SIZE FIELDSTONES 5 COURSES HIGH, AND THE LOWER PHASE OF PREDOMINANTLY MUD-BRICKS. ONE SECTION IN THE S/E CORNER OF THE LOWER PHASE IS OF FIELDSTONES RATHER THAN MUDBRICKS AND THIS IS 3 COURSES HIGH, CONSISTING OF MASSIVE FIELDSTONES WITH A FEW DOUBLE FIST-SIZE TO

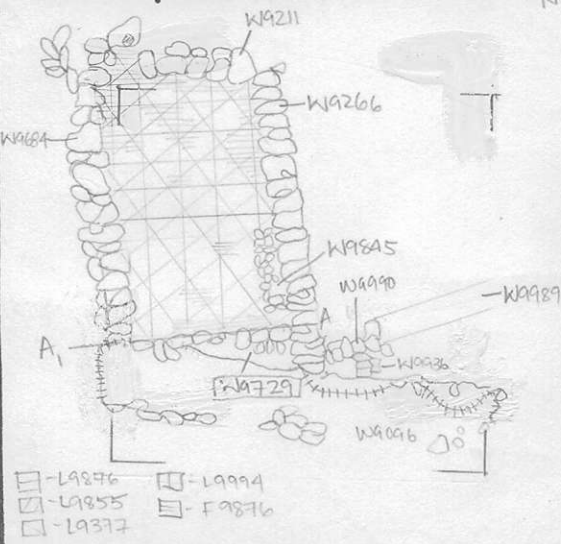
Relations: DOUBLE HEAD-SIZE STONES. THERE ARE ONLY A FEW FUGA LINES VISIBLE. THE BRICKS APPEAR TO BE 25 X 10 CM. NUMBER OF BRICK COURSES CANNOT BE DETERMINED. Length of bricks can not be determined at present.

RELATIONS: THE UPPER STONE-PHASE OF W9729 STOPS JUST OVER A METER SHY OF W9684. A FEW STONES CONTINUE HAPHAZARDLY TO W9684, BUT THIS IS MOST LIKELY A PART OF THE FILL BELOW W9096. IT IS POSSIBLE THAT THE AREA BETWEEN THIS UPPER COURSE OF W9729 AND W9684 WAS ONCE A DOORWAY. THE REMOVAL OF W9096 AND THE FILL BELOW WOULD CLARIFY THIS. THE LOWER PHASE OF MUDBRICKS CONTINUES BELOW THE DOORWAY LEVEL AND APPEARS TO ABUT W9684. IT COULD ALSO DOVETAIL, BUT ONLY THE EXCAVATION OF THE OTHER SIDE OF THE CORNER, WHICH IS NOW IN THE FILL BELOW W9096, WOULD CLEAR THIS UP. THE MUDBRICK PHASE DOVETAILS INTO A PARALLEL STONE PHASE, WHICH IN TURN APPEARS TO ABUT W9266. IT IS POSSIBLE THAT W9990 AND EVEN MUDBRICK W9989 ARE AREA CONTINUATION OF W9729, ALTHOUGH THE ANGLE OF THESE WALLS IS A LITTLE DIFFERENT. THIS CORNER CONFIGURATION WOULD ALSO BENEFIT FROM THE REMOVAL OF W9096, ETC. THE UPPER PHASE IS REACHED BY L9855 AND F9876. THE LOWER PHASE IS REACHED BY L9937 AND L9994. F9994 CAN POTENTIALLY REACH W9729 IF THE FLOOR IS TRACED NEXT SEASON. F9855 DOES NOT REACH W9729.

Additional Observations/Value: VALUABLE IR WALL, BUT ITS FULL CONSTRUCTION CANNOT BE ASCERTAINED WITHOUT THE REMOVAL OF W9096 AND THE FILL BELOW.

*WIDTH UNKNOWN THIS SEASON. - NOT FULLY EXCAVATED

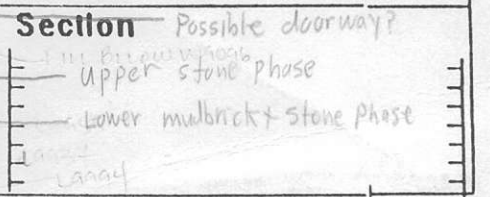
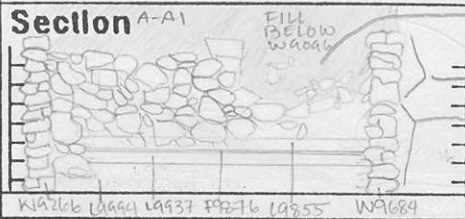
sketch plan



102306

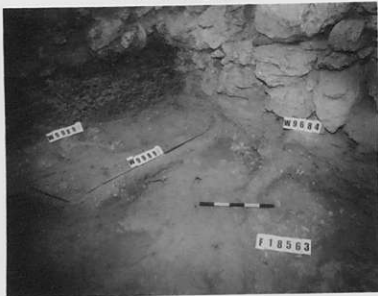


102307



Photos 192860 + 192865 show a W9989. This is incorrect (W9989 is E. of W9864). On L18563 this mudbrick material is recorded as W9729b, apparently a mudbrick phase below the field stone phase of W9729a

192865



W9989 = W9729b

192860



W9989 = W9729b