

Locus L 9754	Dor 1992	Fld G	Sq A, I, 34	Loc. type FILL/MB Collapse to Floor
Open	Date 14/07/92	High at 15.06 E	Low at 14.96 NW	Seals: _____
Close	21/07/92	14.81 E	14.74 NW	Sealed by: _____
Floor: type	CIP	14.86 N	14.74 SW	Locl L9681 9682 _____
Length 2.9	Width 2.9	Vol _____	above 9680 _____	_____
Value U	Remove 1 1 1	Drawn? YES	Locl 9780 9778 _____	_____
Photo # (1)	86586 86587 86588	Photo # (2)	86788	below _____
Written by: SFB	Checked by: J.R.Z.			

Unl	Phase	Stage	Stratum	PoM
-----	-------	-------	---------	-----

Summary

Opened: L9754 WAS OPENED AT BEGINNING OF 1992 SEASON TO CONTINUE DOWN IN AREA SOUTH OF L9698 & W9085

Limits (N) L9818 & L9698 + W9085

(S) L9680 (1991) & L9777

(E) W9684 AND BAULK EXTENDING NORTH FROM IT

(W) L9680, L9810, L9818 & UNEXCAVATED MATERIAL BENEATH W9650 + W9085

Closed: CLOSED L 9754 WHEN IT CAME DOWN ON A FLOOR (L9754) THE NORTHERN PORTION OF LOCUS. WHILE CLEARING FLOOR (*)

Matrix: BROWN, MEDIUM HARD MATERIAL, SOFTER THAN HARD, CLAYEY MUDBRICK OF L9777, BUT HARDER THAN GRAY-BROWN POWDERY MATERIAL L9818 TO WEST OF DRAIN L9698. THE N.E. CORNER OF LOCUS CONTAINS HARD BROWN MATERIAL WITH (OVER)

Relations: L9754 SEEMS TO CONTINUE THE MATRIX OF L9681. THE AREA BENEATH THE TWILIGHT ZONE OF L9680/L9681 CONTAINED A LITTLE OF PITLIKE MATERIAL, BUT THIS WAS REMOVED IN INITIAL CLEANING. BELOW, MATRIX OF L9754 CONTINUES DOWN IN ITS SOUTHERN PART INTO L9780. IN ITS N.E. PART L9754 COVERS ITS PARTIAL FLOOR. TO THE NORTH: THE MATRIX OF L9754 BECOMES SOFTER WHERE IT OVERLAYS THE FLOOR AND CONTINUES INTO MATRICES OF L9818 & L9810. L9754 IS CUT BY DRAIN L9698 IN THE EASTERN PART OF ITS NORTH LIMIT. WEST: AT NORTH, MATRIX CONTINUES INTO L9818 & L9810. SOUTH OF THAT, MATRIX OF L9754 CONTINUES UNDER W9085 & UNDER W9650. TO THE SOUTHWEST, L9754 IS CUT BY PIT L9680. TO THE SOUTH, L9754 REACHES L9777. TO EAST: THE SOUTHERN END OF L9754 REACHES W9684. NORTH OF W9684, MATRIX OF L9754 CONTINUES INTO BAULK.

PHOTOS: 86587-91 (5)

(*) L9754, A SECOND, HIGHER FLOOR WAS DISCOVERED. THIS FLOOR AND THE FILL ABOVE IT HAVE BEEN DESIGNATED 9810. FLOOR MAKE-UP & FILL BELOW AS L9818

Additional Observations/Value: L9754 & MATERIAL BELOW IT PROVIDE CLUES TO RELATION OF FLOORS IN ITS NORTH PART TO MUDBRICK WALL (?) REMAINS L9777 TO SOUTH.

Locus L 9754	Dor 19 9.2	Fld 16	Sq A134	Loc. type FLOOR
Open	Date	High at	Low at	Seals: _____
Close				Sealed by: _____
Floor: type				Locl 9789 9754 9818
Length	Width	Vol		above _____
Value	Remove	Drawn?		below _____
Photo #(1) 86987	Photo #(2) 86789			
Written by: SFB	Checked by: JRZ			

Unit	Phase	Stage	Stratum	PoM
------	-------	-------	---------	-----

Summary

Opened: _____

Limits (N) N. BAULK & PIT L9833
 (S) L9809 ; L9780
 (E) L9698
 (W) L9798, L9809, BAULK UNDER W9085

Closed: _____

NOTE 1: _____

Matrix: A "TESSERA" WAS FOUND BETWEEN WHAT WERE BELIEVED TO BE RESURFACINGS OF THIS IRON AGE FLOOR NEAR THE NORTH BAULK. THIS AREA OF THE PRESUMED FLOOR HAD BEEN COVERED BY STONY RUBBLE. THEREFOR EITHER: (A) THIS "TESSERA" (SEE BASKET #98261) IS IRON AGE; OR (B) THE APPARENT SURFACE NEAR N. BAULK IS NOT ACTUALLY

Relations: THIS CARD DESCRIBES FULL EXTENT OF FLOOR L9754 AND ITS RELATIONS TO SURROUNDING LOCI.

ABOVE: THE EAST PART OF L9798, ALL OF L9818, AND THE NORTH SIDE OF L9754 ALL COVER FLOOR L9754, but do not seal it.

BELOW: NO EXCAVATION WAS DONE IN 1992 BELOW FLOOR L9754

NORTH: FLOOR L9754 IS CUT BY PIT L9833 AT N.E. WEST OF L9833 FLOOR L9754 SEEMS TO GO INTO BAULK. THIS IS NOT CERTAIN AS FLOOR WAS DIFFICULT TO TRACE IN THIS AREA

WEST: FLOOR L9754 IS CUT BY WEST PART OF L9798

SOUTH WEST: FLOOR L9754 IS CUT BY PIT L9809. FLOOR L9754 CONTINUES INTO BAULK BELOW EAST END OF W9085

SOUTH: FLOOR L9754 IS CUT BY L9780

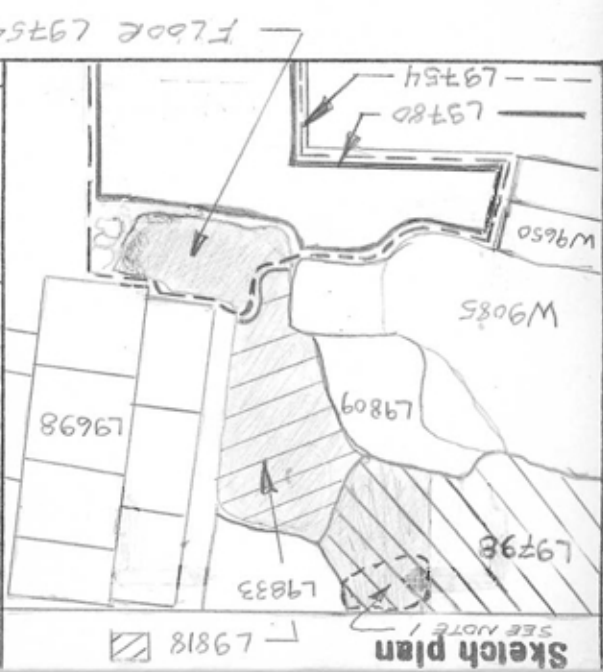
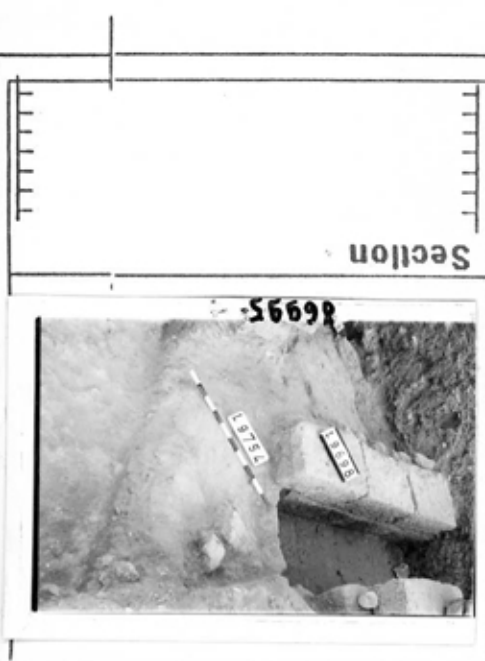
EAST: FLOOR L9754 IS CUT BY ROCKY AREA AT N.E. CORNER OF L9754 PROBABLY ASSOCIATED WITH DRAIN L9698

NORTH EAST: FLOOR L9754 IS CUT BY DRAIN L9698

PHOTOS: 68781-92 (12)

MATERIAL ABOVE FLOOR L9754 SHOWED EVIDENCE OF MANY RESURFACINGS TYPIFIED BY SMALL PARTIAL FLOORS L9768 & L9793, also L9810.

Additional Observations/Value: * NOTE 1 (CONT.) PART OF FLOOR L9754 BUT REPRESENTS THE SOUTHERN TIP OF A ROMAN DISTURBANCE PROJECTING INTO SQUARE FROM THE NORTH BAULK. - S. BEVERLY



9754