

(entered)

Locus L 9767	Dor 199,2	Fld G	Sq A13H	Loc. type PIT
Open Date 16/07/92	High at 15.77	Low at 15.72	Seals: _____	
Close Date 21/07/92	High at 15.25	Low at 15.18	Sealed by: 9761	
Floor: type 1	Width 0.5	Vol	Locl 9761	
Length 0.8	Remove 2,010,719,2	Drawn?	above	
Value 1d	Photo #(1)	Photo #(2)	Locl 9768 9786	
Written by: SFB	Checked by: JRZ		below	

Unit	Phase	Stage	Stratum	PoM
Summary				

Opened: L9767 WAS OPENED WHEN ASHLARS W9761 WERE REMOVED

Limits (N) L9751  
 (S) PREVIOUSLY EXCAVATED L9696  
 (E) PREVIOUSLY EXCAVATED L9616 & L9695  
 (W) L9750, L9752

Closed: CLOSED L9767 WHEN IT CAME DOWN ON A ≈ 5 CM DEEP DEPOSIT ON A PARTIAL FLOOR IN THE SE CORNER OF LOCUS, L9768.

Matrix: DENSELY PACKED SHERDS IN MATRIX OF POWDERY, GRAY/BROWN SOIL. PROBABLY SAME MATRIX AS L9696 (1981) DISTINCT FROM HARDER, SHERD & STONE FILLED BROWN SOIL OF L9751 TO NORTH AND SOFTER, CLEANER BROWN SOIL OF L9752 TO WEST

Relations: L9767 IS SEALED ABOVE BY ASHLARS L9761. L9767 CUTS HARD BROWN STONEY MATERIAL OF L9751 TO ITS NORTH. TO THE WEST, L9767 CUTS SOFTER BROWN MATERIAL OF L9752. TO THE SOUTH, L9696 SEEMS TO BE THE SAME MATRIX AS THIS PIT BUT HAS BEEN IDENTIFIED AS A ROBBER TRENCH. TO THE EAST L9616 PROBABLY CONTAINED SOME MATERIAL FROM THIS PIT IN ITS WESTERN END. IT IS POSSIBLE SOME LATE IRON AGE MATERIAL REMAINED UNDISTURBED BETWEEN PIT L9767 AND TRENCH FOR DRAIN L9698. IN ITS SE CORNER, L9767 CUTS FLOOR DEPOSIT L9768 SLANTING DOWN TO WEST. L9767 MATRIX CONTINUES DOWN IN ITS WESTERN PORTION AS L9786.

NOTE: MATERIAL FROM THIS PIT IS ALSO IN SE CORNER OF L9752 AND CONTAMINATED SEVERAL BASKETS FROM THAT LOCUS. L9767 CAN BE SEEN BENEATH W9761 IN PHOTOS 86382-4

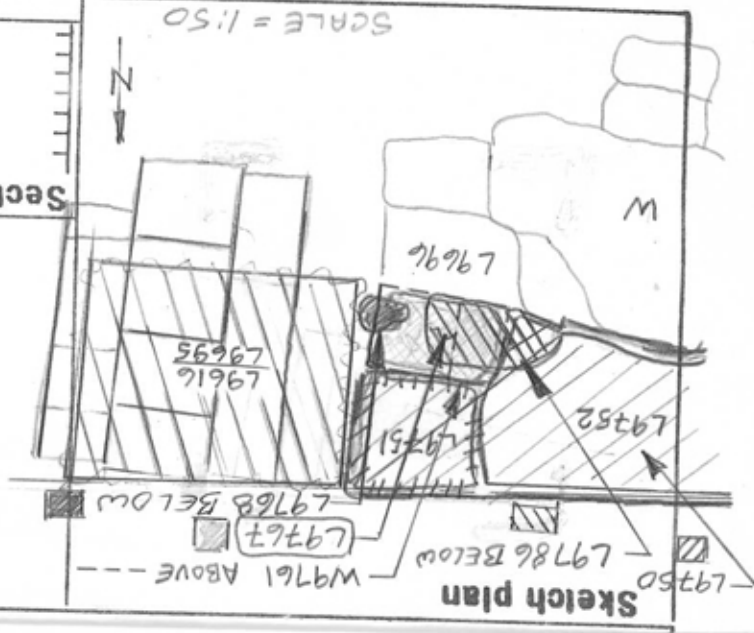
Additional Observations/Value:

Photo

Section

Photo

Section



L 9767

St Lc

Df St Ob Ma R C P1 P2 P3

pt sh cr 2 s pr  
, 2 bor, mostly basket handle jar fragments,

pt ma bn s

pt sh cr 2 s pr  
, mostly fragments of basket handle jars.

pt sh cr 2 s pr  
Persian Cypriot, basket handle jar pieces.

pt ma bn s

pt sh cr 2 s pr

pt sh cr 0 u pr ir