

Locus LJ 9790	Dor 199,2	Fld G	Sq A, L34	Loc. type FLOOR DEPOSIT
Open 22,07,92	High at 15.25	Low at 15.25	Seals: 9791	
Close 2,307,9,2	15.22 N.E	15.17 SW	Sealed by: 9792	
Floor: type C.P	15.22 N.E	15.17 SW	Locl 9702	
Length 0.4	Width 0.4	Vol	above	
Value S	Remove 2,4107,9,2	Drawn? YES		
Photo #(1) 86459	Photo #(2) 86460	Locl 9791		
Written by: S.F.B	Checked by: J.R.Z	below		

Unit	Phase	Stage	Stratum	PoM
------	-------	-------	---------	-----

Summary

Opened: L9790 WAS OPENED WHEN A LARGE FLAT STONE THOUGHT TO BE AN EXTENSION OF W9702 WAS REMOVED AND A SMALL AREA OF FLOOR FOUND

Limits (N) L9311 (EXCAVATED IN 1988) SEALED BENEATH.

(S) L9311 "

(E) L9311 "

(W) L9700 (?) AND/OR L9701 (?) (EXCAVATED IN 1991)

Closed: L9790 WAS CLOSED WHEN THIN LAYER OF FILL & MINISCULE FLOOR DEPOSIT WERE REMOVED

Matrix: A 3-8 CM LAYER OF FINE LIGHT BROWN SOIL OVERLAYING

ANCA: 1/2 CM DEPOSIT OF ASHES, SMALL BONES, & POTSHERDS ON THIN WHITE LIME FLOOR

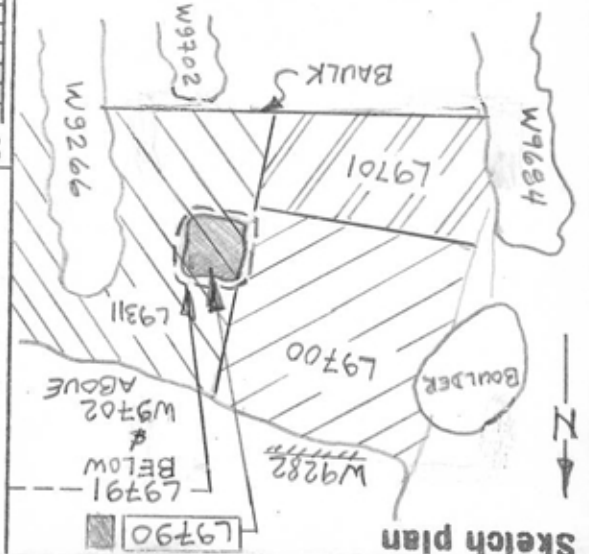
Relations: RELATIONS ARE UNCLEAR. FLOOR MUST BE PRESUMED TO HAVE BEEN CUT BY ALL SURROUNDING LOCT AS NO MENTION OF ANY FLOORS AT THIS LEVEL IS TO BE FOUND ON LOCUS CARDS.

ASSOCIATION OF THE FLAT STONE WHICH SEALED THIS LOCUS WITH W9702 IS HIGHLY SPECULATIVE AS STONES WHICH MAKE UP W9702 TO SOUTH ARE SMALL FIELD STONES WHILE THIS STONE IS LARGE FLAT STONE MORE SUITABLE FOR PAVING APPLICATION.

SEE PHOTOS 86415-86418 FOR VIEW OF STONE (PART OF W9702?) WHICH SEALED L9790.

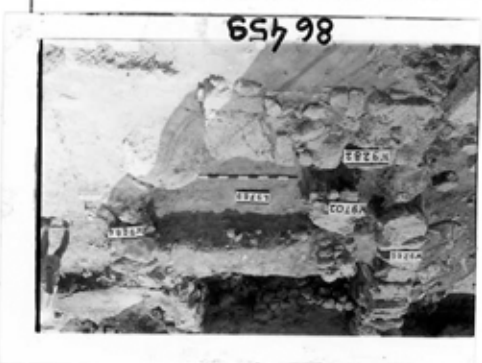
Additional Observations/Value: FLOOR L9790 IS AT SAME ELEVATION AS FLOOR L9768 TO THE N.W. MAY HAVE BEEN USED CONTEMPORARILY WITH THIS FLOOR AND WALLS W9266 & W9684.

SCALE = 1:50



Sketch plan

Section



Section

