

(interred)

<b>Locus</b> L 9794	<b>Dor</b> 19 9, 2	<b>Fld</b> G	<b>Sq</b> AI34	<b>Loc. type</b> FILL					
<b>Open</b> 24/07/92	<b>Date</b>	<b>High</b> 15.07	<b>at</b> C	<b>Low</b> 15.07	<b>at</b> C	<b>Seals:</b> _____	_____	_____	_____
<b>Close</b> 05/08/92		<b>High</b> 14.55	<b>at</b> C	<b>Low</b> 14.55	<b>at</b> C	<b>Sealed by:</b> _____	_____	_____	_____
<b>Floor:</b> type	_____	<b>Width</b> 0.4	<b>Remove</b> 05/08/92	<b>Vol</b> _____	<b>Drawn?</b> _____	<b>Locl</b> 9681	_____	_____	_____
<b>Length</b> 0.6						<b>above</b>	_____	_____	_____
<b>Value</b> ?id						<b>below</b>	_____	_____	_____
<b>Photo # (1)</b>	_____	<b>Photo # (2)</b>	_____			<b>Locl</b>	_____	_____	_____
<b>Written by:</b> SFB		<b>Checked by:</b> IR2				<b>below</b>	_____	_____	_____

<b>Unli</b>	<b>Phase</b>	<b>Stage</b>	<b>Stratum</b>	<b>PoM</b>
-------------	--------------	--------------	----------------	------------

**Summary**

**Opened:** L9794 OPENED IN 1992 TO CONTINUE DOWN IN AREA W. OF W9282

**Limits (N)** LARGE FLAT VERTICAL ASHLAR BETWEEN W9282 & L9692, & STONES BELOW

**(S)** LARGE BOULDER (PRESS WEIGHT) S.W. OF W. END OF W9282 & STONES BELOW

**(E)** WEST END OF W9282 & STONES BELOW: ⊗

**(W)** BAULK EXTENDING N. FROM W9684

**Closed:** END OF SEASON, NOT CLOSED (STONES ON (3) SIDES HAVE REDUCED THIS LOCUS TO A VERY SMALL AREA)

**Matrix:** MEDIUM DENSITY BROWN FILL SIMILAR TO NEIGHBORING LOCI L9769, L9771, & L9811 THOUGH SOMEWHAT SOFTER. DIFFERENTIATED FROM THESE LOCI BECAUSE IT WAS ASSUMED TO BE DISTURBED BY WALL W9282 & DRAIN L9698. POTTERY MAINLY SAME AS THESE LOC.

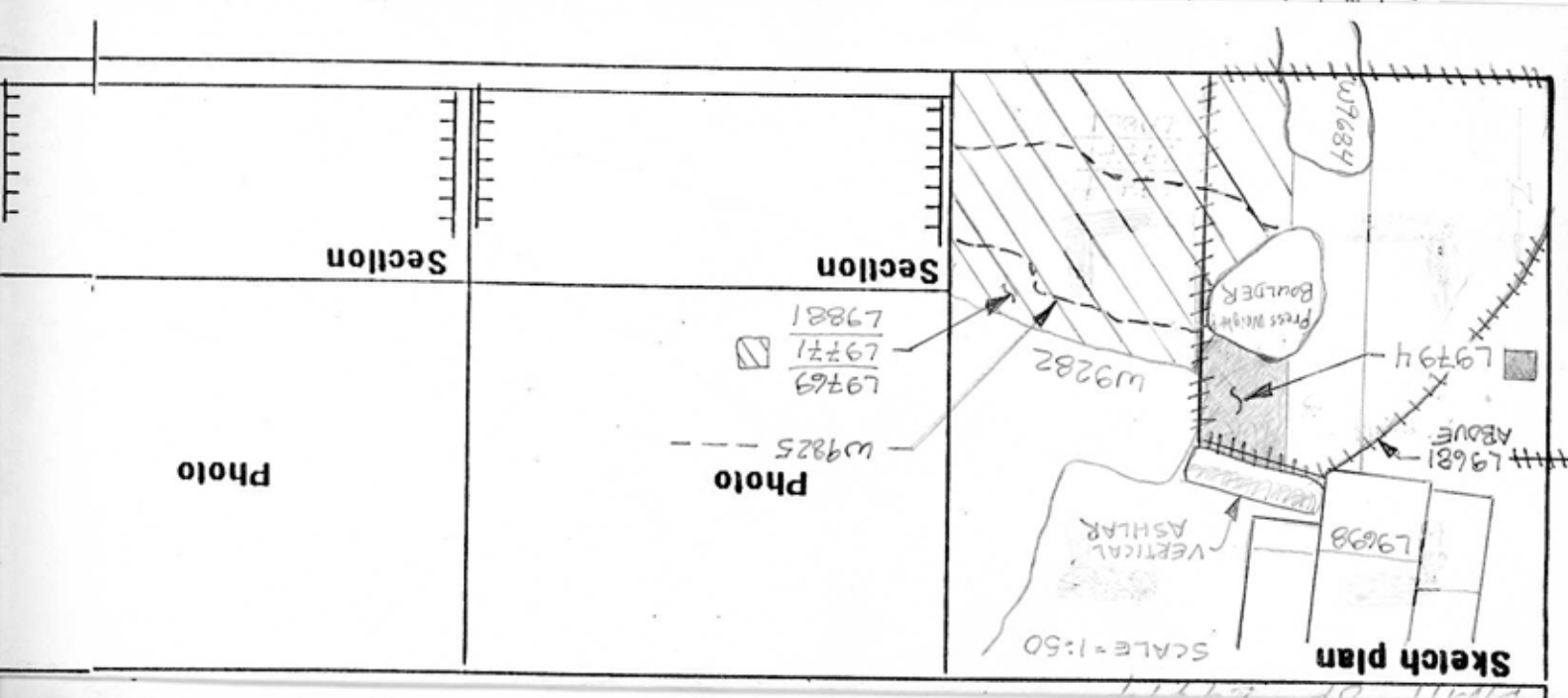
**Relations:** ABOVE: RELATION OF L9794 TO L9681 (DESCRIBED AS "PIT") IS UNCLEAR, THOUGH L9794 MAY BE A CONTINUATION OF MATRIX OF L9681. BELOW: UNEXCAVATED. PREDOMINANCE OF STONES IN LOWER PART OF THIS LOCUS MAY RELATE TO SURROUNDING WALLS.

**NORTH:** L9794 REACHES LARGE, FLAT, VERTICAL ASHLAR & STONES BENEATH IT. **WEST:** L9794 CONTINUES INTO BAULK EXTENDING NORTH FROM W9684. **SOUTH:** L9794 REACHES LARGE BOULDER (RE-USED(?) PRESS. WEIGHT) WHICH MAY BE PART OF W9825. IN ITS S.E. CORNER, IT SEEMS TO CONTINUE MATRICES OF MUDBRICK COLLAPSE/FILL LOCI L9769, L9771, & L9811. **EAST:** THE APPARENT LATE DATE OF THE LOWER "B" (?) PHASE OF W9282 WOULD INDICATE THAT IT CUTS L9794. HOWEVER, POTTERY FROM L9794 IS NOT LATER THAN IR2. CAN LOWER PHASE OF W9282 BE LATE IRON AGE? THERE IS A SLIGHT POSSIBILITY L9794 MAY REACH LOWER PHASE OF W9282.

IF BOULDER (PRESS WEIGHT) IS RE-USED IN UPPER PART OF W9825, THEN L9794 REACHES W9825.

⊗ AND SMALL LENGTH OF L9769, L9771, & L9811. TO S.E.

**Additional Observations/Value:** MATERIAL FROM L9794 MAY HELP DATE W9282 AND FALLING(?) FLAT ASHLAR WHICH DEFINES NORTH



L 9794  
 P3  
 P2  
 P1  
 it LC Ma R C  
 Df St Ob  
 sa sh cr 0 d ir1 ir2a  
 sa ma bn d  
 sa sh cr 2 u ir  
 sa ma bn u  
 sa sh cr 2 d ir1 ir2  
 sa ma bn u  
 sa ot sl ?d  
 .70 sa sh cr 2 ?d ir2a  
 ant.  
 4.55 sa