

(continued)

<b>Locus</b> L 9795	<b>Dor</b> 1992	<b>Fld</b> G	<b>Sq</b> AI 32	<b>Loc. type</b> Destruction layer to floor
<b>Open</b> 24/07/92	<b>Date</b>	<b>High</b> at 12.69 E	<b>Low</b> at 12.62 W	<b>Seals:</b> none yet
<b>Close</b> 30/07/92		12.64 W	12.57 E	<b>Sealed by:</b>
<b>Floor:</b> type Cf		12.64 W	12.57 E	<b>Locl</b> 9779
<b>Length</b> 2.5	<b>Width</b> 2.3	<b>Vol</b>		<b>above</b>
<b>Value</b> 4	<b>Remove</b>	<b>Drawn?</b> Y, 65		
<b>Photo # (1)</b> 86580	<b>Photo # (2)</b> 86581			<b>Locl</b> 9813
<b>Written by:</b> RAI	<b>Checked by:</b> J.R.Z			<b>below</b>

Unit	Phase	Stage	Stratum	PoM
<b>Summary</b>				

**Opened:** Brought [L9779] down to level of pit [L9766] to North, with which it was collapsed, since material was now identical; opened [L9795] as continuation of destruction layer, to East of [W9804]

**Limits (N)** Bounded by [W9704]

**(S)** Bounded by [W9800] and South bank between AI32 and AI31

**(E)** Bounded by East bank of AI32 and pit [L9762]

**(W)** Bounded by [W9804] and [L9805]

**Closed:** Came down on [F9795] in North half of [L9795], opened [L9812] as material to South of [F9795]; material below [F9795] not yet named

**Matrix:** Bunt mudbrick debris, similar to that of destruction loci above, with the addition of large patches of charcoal along South bank and west of pit [L9762]; to the North, three groups of pots and jars (entire?) lying smashed on a floor, with several small patches of white powdery plaster both below and above, light gray ash just below the pottery down to a hard-packed floor

**Relations:** [L9779] covers, but does not seal [L9795]; [L9795] covers, but does not seal [L9812]; [F9795] could not be traced as covering [L9812]. [F9795] covers and seals the unnamed material below it.

To the North, [L9795] and [F9795] reach or continue into [W9704]. Until [W9704] has been excavated, the precise relation is uncertain. It is also possible that [W9704] floats above all destruction debris loci. See the locus cards for [L9765] and [L9779] relations to the North.

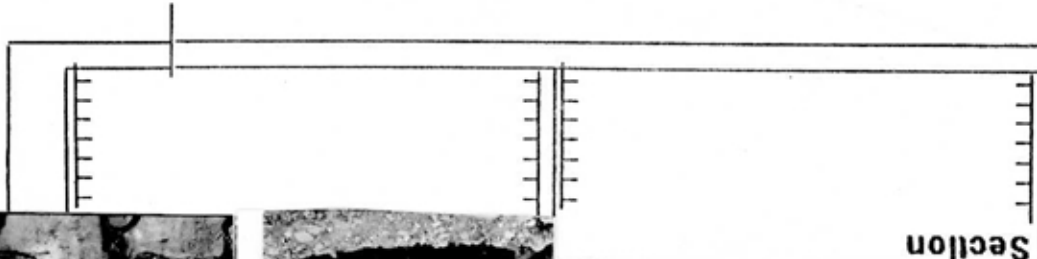
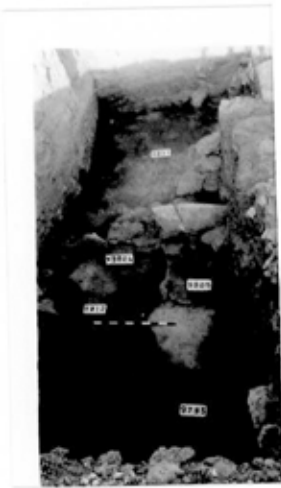
To the South, [L9795] reaches [W9800] and continues into the South bank of AI32 [F9795], however, could not be traced as reaching [W9800] nor the South bank.

To the East, [L9795] continues into the East bank of AI32. [L9795] is cut by pit [L9762]. [F9795] appears to underlie the North edge of pit [L9762], whereas pit [L9762] cuts [F9795] to the South of the pit's edge.

To the West, [L9795] reaches [W9804]; [F9795] could not be traced as reaching [W9804]. [L9795] reach [L9805].

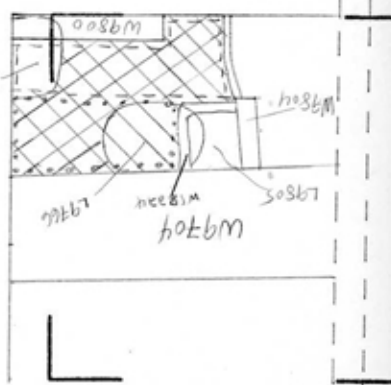
**Photos:** 86507-86508; 86509-86512; 86527-86532; 86537-86542

**Additional Observations/Value:** Because of its position at the bottom of the destruction debris loci, and a certain floor, of very high value.



Section

N ↓



L9779  
L9795  
L9795  
L9782

h plan  
Temporary  
walk