

Locus LJ 9799	Dor 19 9,2	Fld G	Sq AI 34	Loc. type PIT
Open 27/27/92	High 15.14	at C	Low 15.14	at C
Close 1/28/92	High 14.64	at C	Low 14.64	at C
Floor: type	Width 0.2	Vol	Drawn? NO	Locl 9752
Length L.O	Remove			above
Photo # (1)	Photo # (2)			Locl
Written by: SFB	Checked by: JRZ			below

Unit	Phase	Stage	Stratum	PoM
-------------	--------------	--------------	----------------	------------

Summary

Opened: WHEN L9752 WAS LEVELED AT BOTTOM ELEVATION OF FLOOR L9768, ASHY PIT MATERIAL WAS SEEN IN S.W. CORNER. THIS WAS LABELED L9799

Limits (N) L9798 & L9837

(S) BAULK BENEATH W9085

(E) L9798 & L9837

(W) BAULK BENEATH W9774 AND TO ITS NORTH

Closed: NOT CLOSED, END OF SEASON

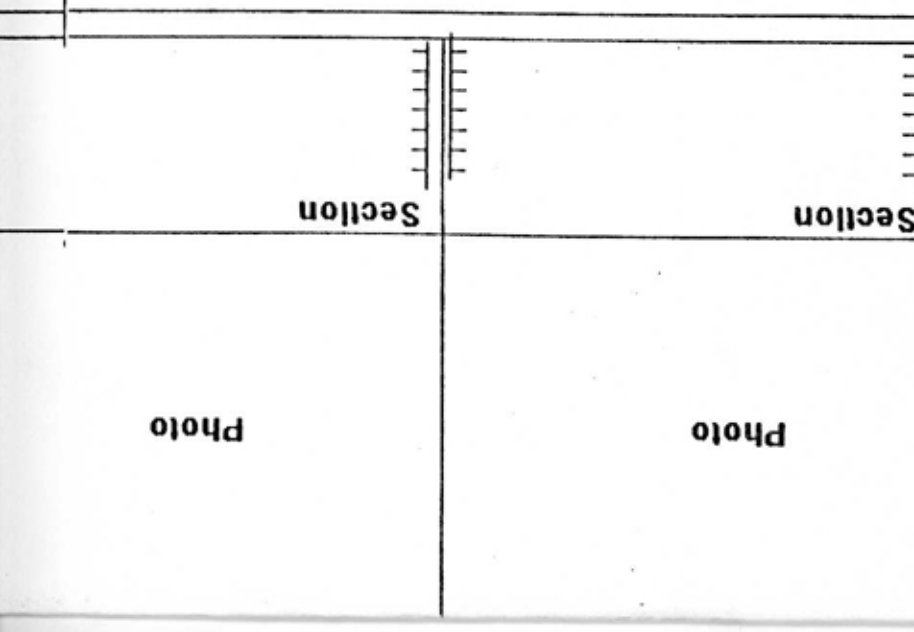
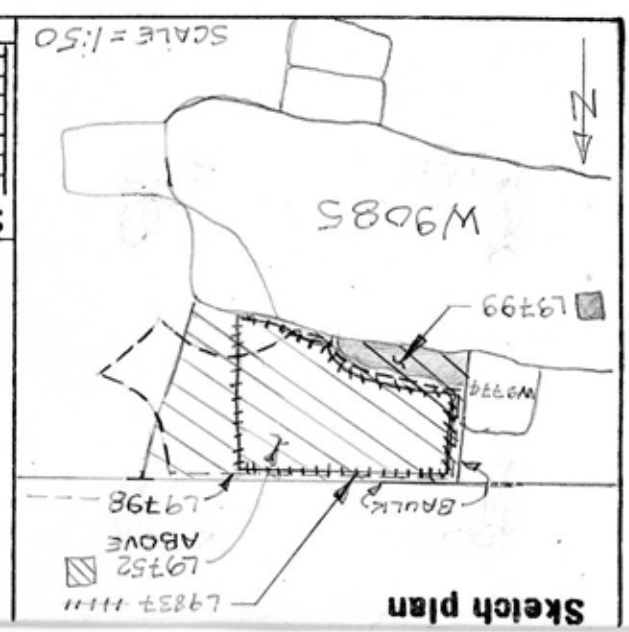
Matrix: LIGHT GRAY-BROWN POWDERY SOIL WITH LOTS OF POTTERY INCLUSIONS. QUITE DIFFERENT FROM DARKER BROWN COMPACT SOIL OF SURROUNDING LOCI AND ALSO DISTINCT FROM LIGHT GRAY ASH WHICH INTRUDED INTO ITS MATRIX IN PLACES NEAR BOTTOM

Relations: ABOVE: L9799 IS CUT BY FOUNDATION TRENCH OF W9085 WHICH IS IN S. PART OF L9752. BELOW: (BOTTOM OF L9799 NOT REACHED IN 1992 SEASON.) NORTH & EAST: PIT L9799 CUTS L9798/L9837. WEST: MATRIX OF L9799 CONTINUES INTO BAULK BELOW W9774. SOUTH: MATRIX OF L9799 CONTINUES INTO BAULK BELOW W9085

*OF L9798

Additional Observations/Value: AT FIRST SEEMED LIKE TYPICAL PERSIAN PIT. HAS YIELDED A LOT OF IR2C MATERIAL & MAY BE PR-IR TRANSITIONAL. IR2C MATERIAL MAY HAVE INTRUDED FROM IRON AGE FILL TO NORTH.

98240	AI34	14.85	14.74	pt	ma	bn	d
Bone.							
98297	AI34	14.72	14.64	pt	sh	cr	2 d
Pottery from grey ashy soil.							
98299	AI34	14.72	14.45	pt	ma	bn	d
Bone.							



Photo

Photo

Section

Section